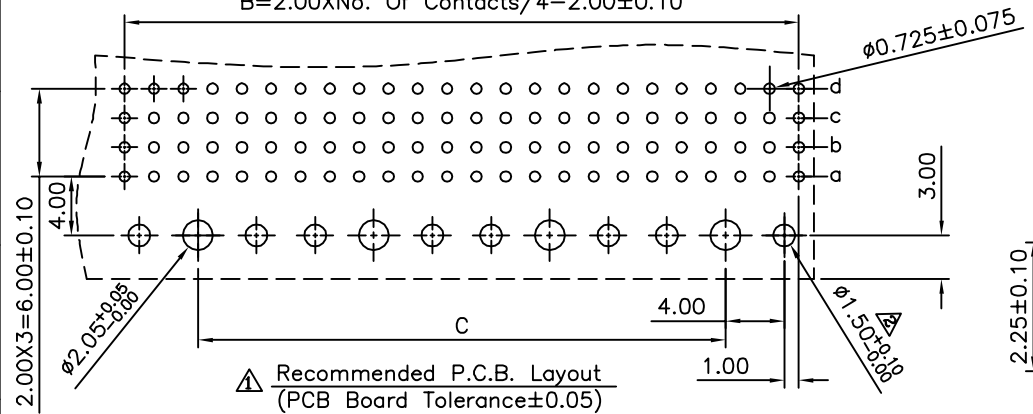
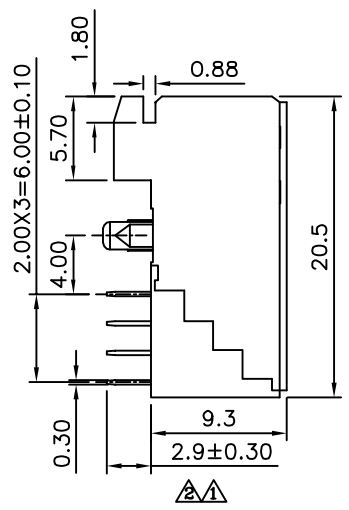
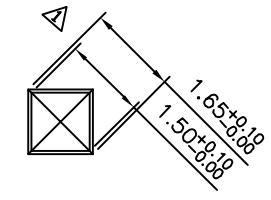
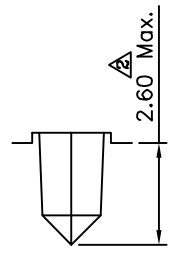
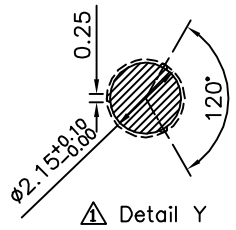
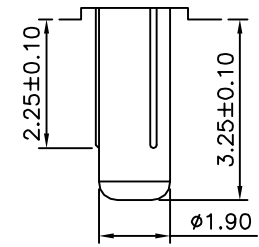
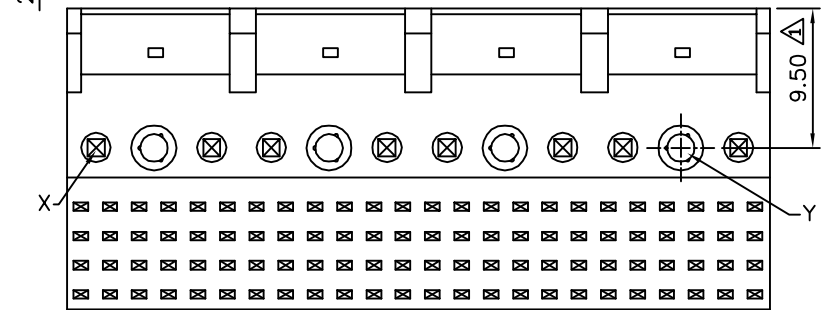
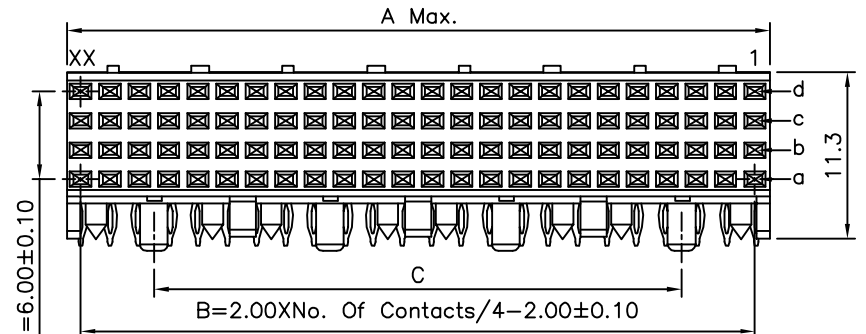


B=2.00XNo. Of Contacts/4-2.00±0.10



Recommended P.C.B. Layout
(PCB Board Tolerance±0.05)



△ SPECIFICATION

Current Rating:1 Amp
 Dielectric Withstanding Voltage:AC 1000V For 1 Minute
 Insulation Resistance:1000 Megaohms Min. At DC 500V
 Contact Resistance:30 Milliohms Max. At DC 100mA
 △ Operation Temperature:-55°C~+125°C
 △ Housing:LCP(UL94V-0)
 Contact:Phosphor Bronze
 Gold Plated 10u" On Contact Area,Tin
 Plated On Solder Tails,Over Nickel
 RoHS Compliant

Pin	A	B	C
24	11.95	10.0	0
48	23.95	22.0	12.0
72	35.95	34.0	24.0
96	47.95	46.0	36.0
120	59.95	58.0	48.0
144	71.95	70.0	60.0
168	83.95	82.0	72.0
192	95.95	94.0	84.0

4UCON 元化興業股份有限公司
 4UCON TECHNOLOGY INC.

DRAWING No.		APPROVED BY		UNLESS OTHERWISE SPECIFIED TOLERANCES ARE
18213		EMILY		
		CHECKED BY		
		HZF		△ X. ±0.5 △ .X ±0.25 △ .XX ±0.15
		DRAWING BY		
		SONG		UNIT
SCALE	NONE	REV.	A2	mm

NO.	REV.	REVISIONS	CHK	DATE
△ A2		Modify Data	HZF	12/20/2013
△ A1		Modify Data	HZF	03/05/2010
△ A0		NEW RELEASE	HZF	06/20/2009