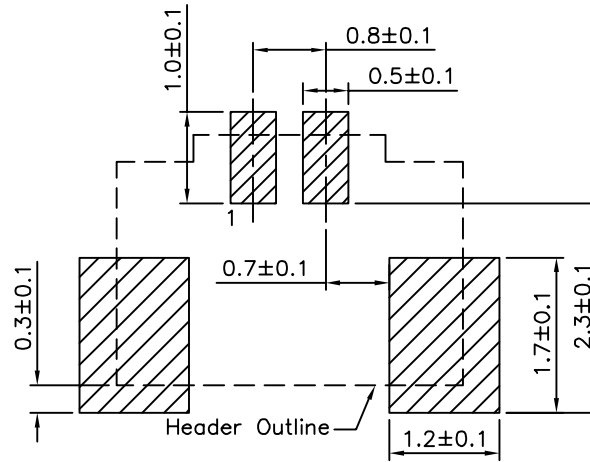


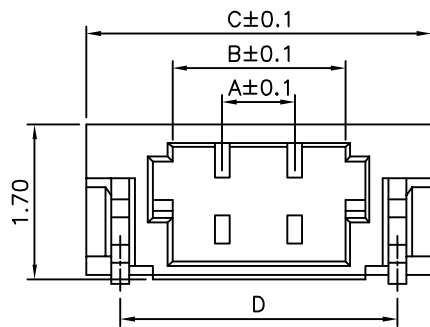
△



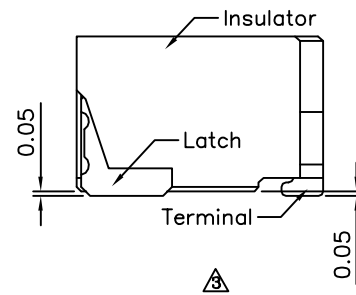
△ Recommended P.C.B. Layout

△ SPECIFICATION

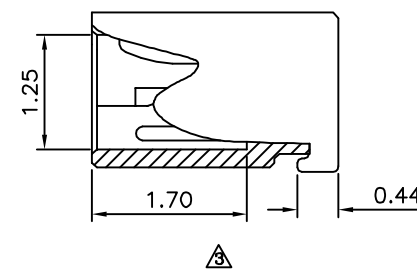
Current Rating:0.5A AC,DC
 Voltage Rating:30V AC,DC
 Contact Resistance:20 Milliohms Max.
 Insulation Resistance:100 Megaohms Min.
 Withstanding Voltage:200V AC/Minute
 Temperature Range:-25°C~+85°C
 Insulator:LCP(UL94V-0),Beige
 Contact:Phosphor Bronze,Gold Flash Over Nickel
 Solder Tabs:Bronze,Gold Flash Over Nickel
 RoHS Compliant



△



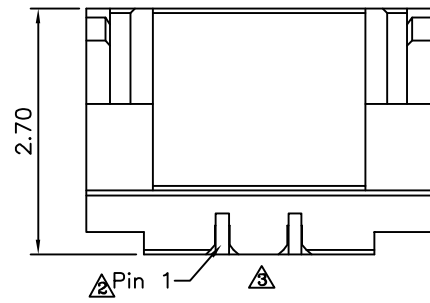
△



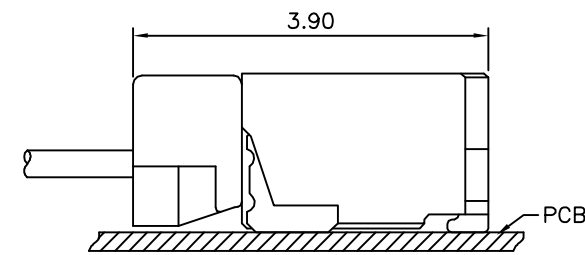
△

△

Pin	A	B	C	D
02	0.80	1.90	3.78	3.04
03	1.60	2.70	4.58	3.84
04	2.40	3.50	5.38	4.64
05	3.20	4.30	6.18	5.44
06	4.00	5.10	6.98	6.24
07	4.80	5.90	7.78	7.04
08	5.60	6.70	8.58	7.84
10	7.20	8.30	10.18	9.44
12	8.80	9.90	11.78	11.04
14	10.40	11.50	13.38	12.64
15	11.20	12.30	14.18	13.44
16	12.00	13.10	14.98	14.24
17	12.80	13.90	15.78	15.04
18	13.60	14.70	16.58	15.84
20	15.20	16.30	18.18	17.44
22	16.80	17.90	19.78	19.04



△ Pin 1 △



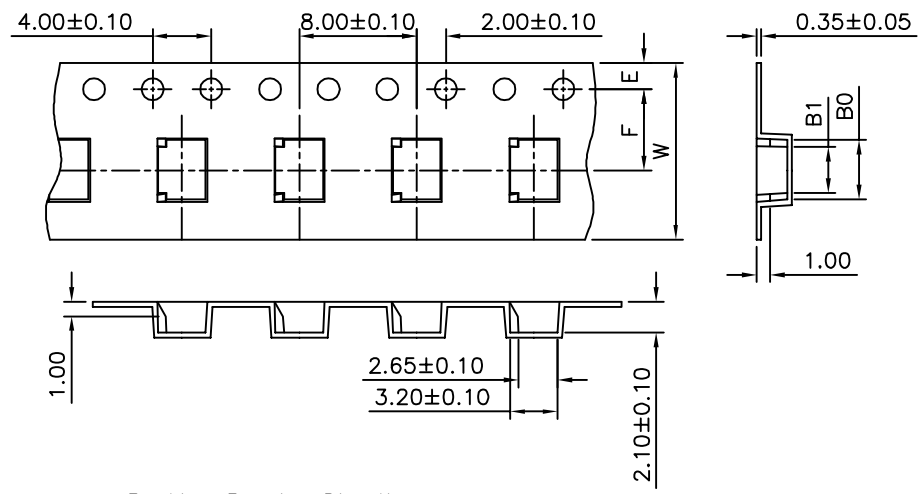
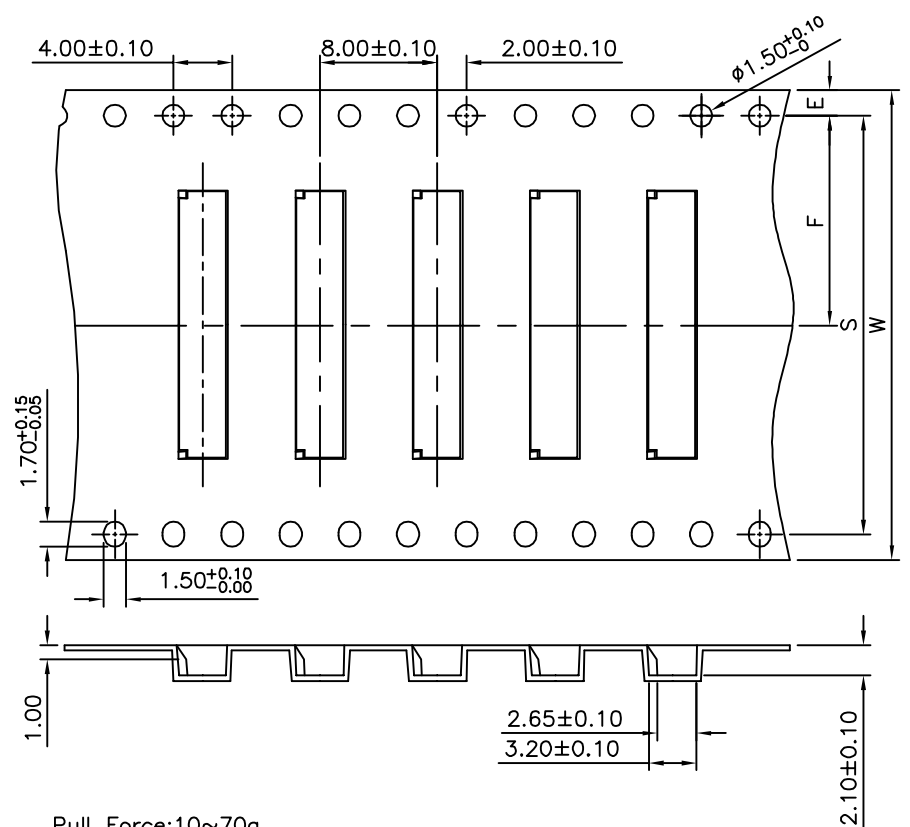
△ Mated Condition

DRAWING No.		APPROVED BY		UNLESS OTHERWISE SPECIFIED TOLERANCES ARE △ .X ±0.25 △ .XX ±0.15 ANG. ±2°
18492		MEI		
		CHECKED BY	HZF	
		DRAWING BY	GAO	
SCALE	NONE	REV.	A3	UNIT mm

NO.	REV.	REVISIONS	CHK	DATE
△ A3		Modify Data	HZF	01/31/2013
△ A2		Add:Pin 1	HZF	04/29/2010
△ A1		Modify Data	HZF	01/22/2010
△ A0		NEW RELEASE	HZF	07/16/2009

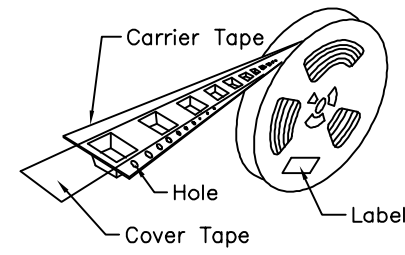
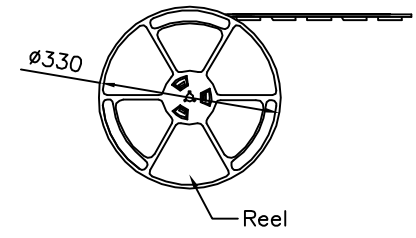
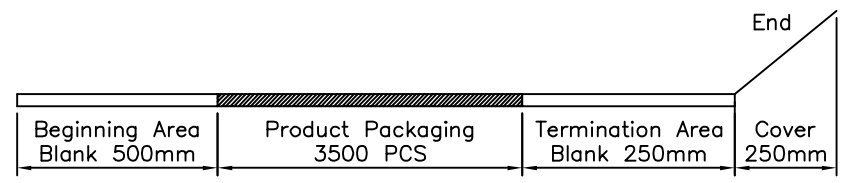
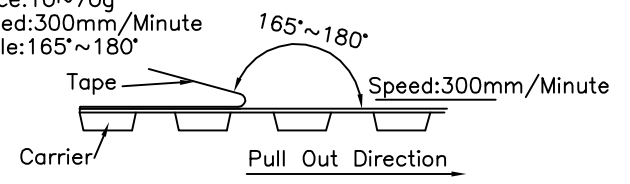
4UCON 元化興業股份有限公司
 4UCON TECHNOLOGY INC.

△ SPECIFICATION
 Q'ty: 3500 PCS/Reel
 RoHS Compliant



Packing Receive Direction

Pull Force: 10~70g
 Pull Speed: 300mm/Minute
 Pull Angle: 165°~180°



Pin	W±0.30	S±0.10	F±0.10	B0±0.10	B1±0.10
2	12.00	-	5.50	4.10	3.10
3	12.00	-	5.50	4.90	3.90
4	12.00	-	5.50	5.70	4.70
5	16.00	-	7.50	6.50	5.50
6	16.00	-	7.50	7.30	6.30
8	16.00	-	7.50	8.90	7.90
10	24.00	-	11.50	10.50	9.50
12	24.00	-	11.50	12.10	11.10
14	24.00	-	11.50	13.70	12.70
15	24.00	-	11.50	14.60	13.60
16	32.00	28.40	14.20	15.40	14.40
17	32.00	28.40	14.20	16.20	15.20
20	32.00	28.40	14.20	18.60	17.60
22	32.00	28.40	14.20	20.20	19.20

4UCON 元化興業股份有限公司
 4UCON TECHNOLOGY INC.

DRAWING No.		APPROVED BY		UNLESS OTHERWISE SPECIFIED TOLERANCES ARE .X ±0.15 .XX ±0.05 ANG. ±1°
18492		MEI		
		CHECKED BY	HZF	
		DRAWING BY	GAo	
SCALE	NONE	REV.	A3	UNIT mm

NO.	REV.	REVISIONS	CHK	DATE
△A3		Modify Data	HZF	01/31/2013
△A2		Add: Pin 1	HZF	04/29/2010
△A1		Modify Data	HZF	01/22/2010
△A0		NEW RELEASE	HZF	07/16/2009