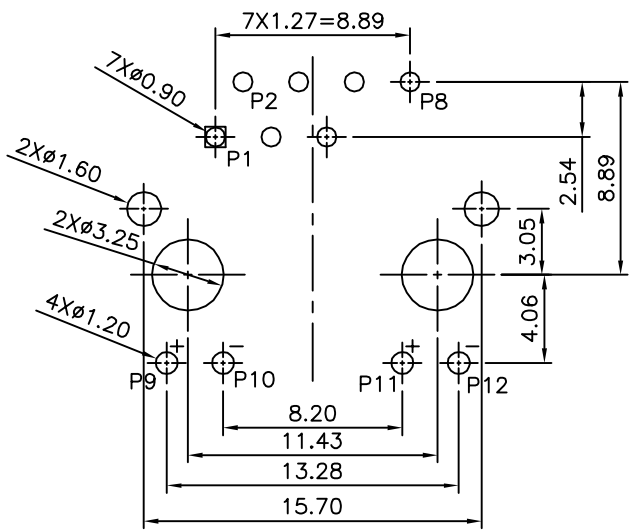
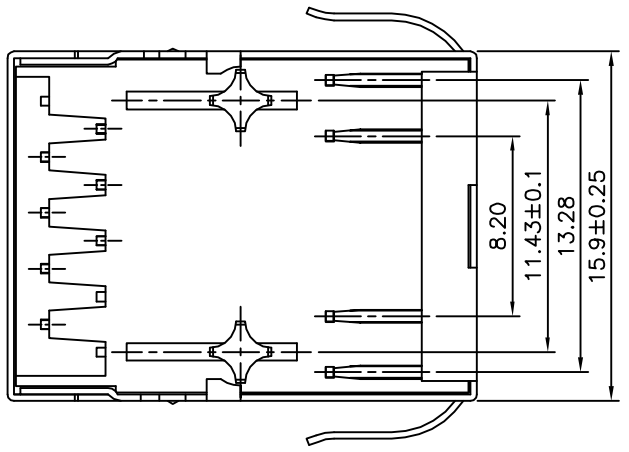
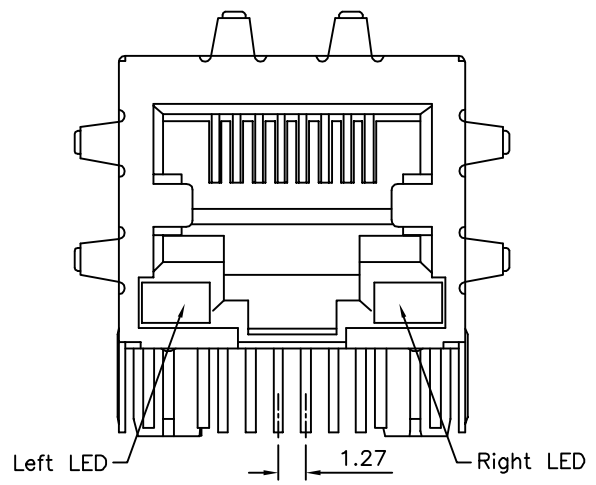
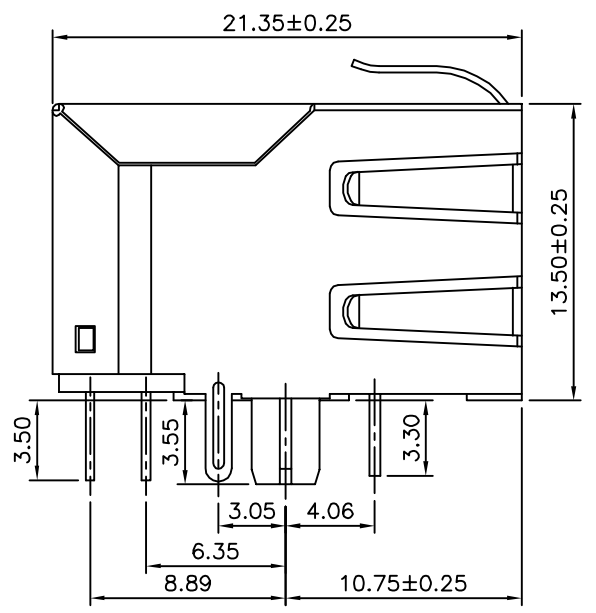


**SPECIFICATION**  
 Housing:PA66(UL94V-0),Black  
 Inserter:PBT(UL94V-0),Black  
 Contact:Phosphor Bronze  
 Gold Plated 06u" On Contact Area,  
 Tin Plated On Solder Tails,Over Nickel  
 Shield:Brass,Nickel Plated  
 Pin Not Electrically Connected Maybe Omitted See  
 Electrical Drawing For Omitted Pins  
 RJ45 Cavities Conform To FCC Rules And Regulation Part 68.  
 Operation Temperature:0°C~+70°C  
 Storage Temperature:-40°C~+85°C  
 RoHS Compliant



Recommended P.C.B. Layout(Component Side View)  
 PCB Tolerances:±0.10

LED Color					
Code	Forward	Reverse	Code	Forward	Reverse
A	Green	Red	J	Green	Orange
C	Green	Yellow(Amber)	K	Black	---
D	Yellow	Red	L	Lime	---
E	Yellow	Green	M	Orange	Green
F	Red	Green	N	Amber	---
G	Green	---	O	Orange	---
H	Red	Yellow	R	Red	---
I	Beige	---	Y	Yellow	---

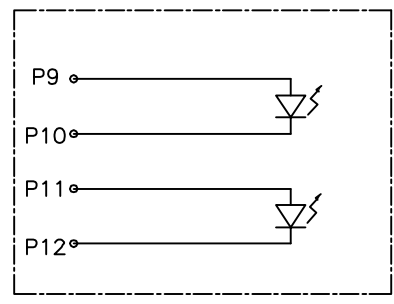
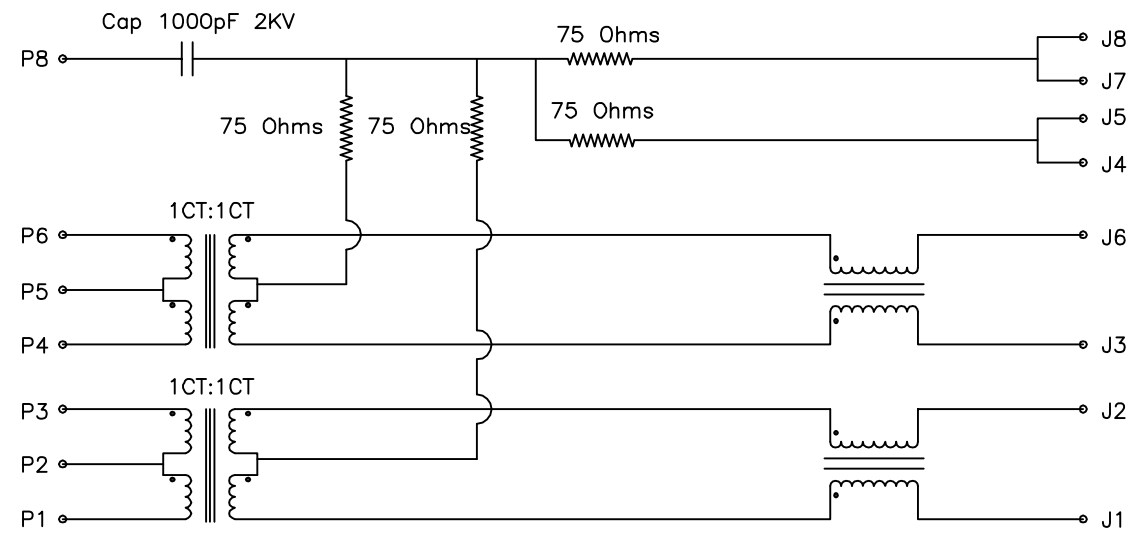
**4UCON** 元化興業股份有限公司  
 4UCON TECHNOLOGY INC.

DRAWING No.		APPROVED BY		UNLESS OTHERWISE SPECIFIED TOLERANCES ARE .X ±0.254 .XX ±0.254 ANG.
20822		MEI		
		CHECKED BY	HZF	
		DRAWING BY	CYP	
SCALE	NONE	REV.	A0	UNIT mm

△ A0	NEW RELEASE	HZF	10/06/2015
NO.REV.	REVISIONS	CHK	DATE

**ELECTRICAL SPECIFICATION**

- 1.0 Turn Ratio:(P1~P3):(J1~J2):1:1±5%  
(P4~P6):(J3~J6):1:1±5%
  - 2.0 Primary Inductance:350uH Min. @100 KHz,0.1V,8mA DC Bias
  - 3.0 DC Resistance:(J1~J2):(J3~J6):1.2 Ohms Max.
  - 4.0 Insertion Loss:1 MHz~100 MHz:-1.2dB Max.
  - 5.0 Return Loss:1 MHz~30 MHz:-16dB Min.  
30 MHz~60 MHz:-12dB Min.  
60 MHz~80 MHz:-10dB Min.
  - 6.0 Cross Talk:1 MHz~100 MHz:-30dB Min.
  - 7.0 Common To Common Mode Attenuation:1 MHz~100 MHz:-30dB Min.
  - 8.0 Isolation:PHY Side To Line Side:1500V AC Or 2250V DC
- RoHS Compliant



LED Color Option

Left LED Single Color Right LED Single Color	Left LED Single Color Right LED Dual Color	Left LED Dual Color Right LED Single Color	Left LED Dual Color Right LED Dual Color

\*F:Forward ; R:Reverse

**4UCON** 元化興業股份有限公司  
4UCON TECHNOLOGY INC.

DRAWING No.		APPROVED BY		UNLESS OTHERWISE SPECIFIED TOLERANCES ARE .X ±0.38 .XX ±0.25 ANG.
20822		MEI		
		HZF		
		DRAWING BY		
		CYP		
SCALE	NONE	REV.	A0	UNIT mm

NO.	REV.	REVISIONS	CHK	DATE
△ A0		NEW RELEASE	HZF	10/06/2015