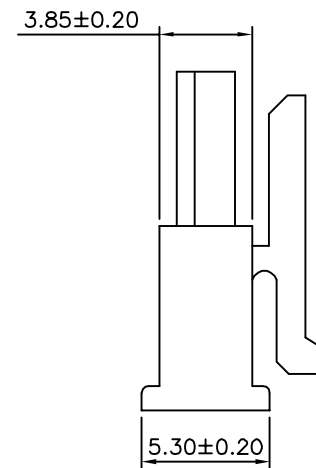
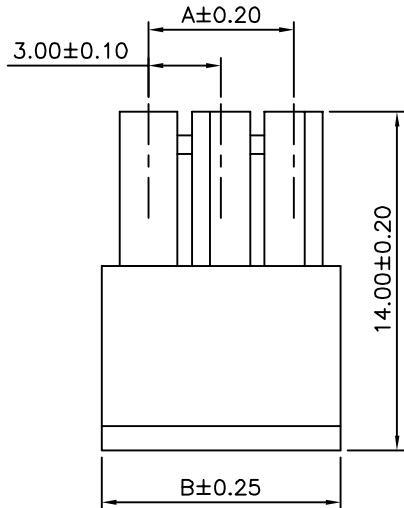
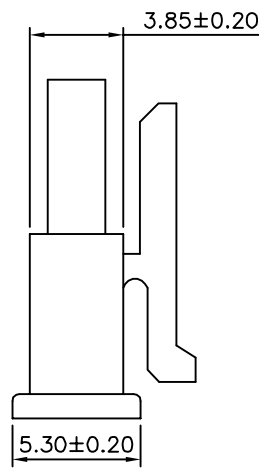
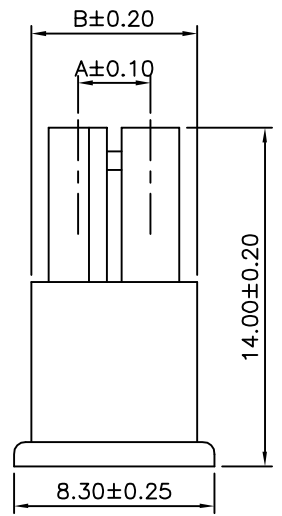
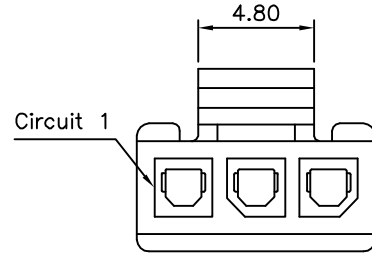
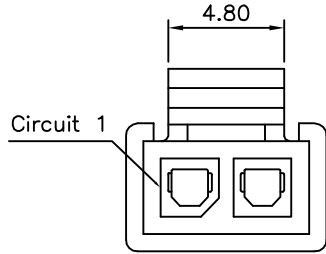


**SPECIFICATION**

- 1.General Characteristics**  
3.0mm Micro-Fit 1XXX Female  
Housing Black Insulator
- 2.Material&Finish**  
Housing:PA66(UL94V-2),Black
- 3.Electrical Characteristics**  
Current Rating:5A AC,DC  
Voltage Rating:250V AC,DC  
Insulation Resistance:1000 Megohms Min.  
Withstand Voltage:1500V AC/Minute
- 4.Environmental Characteristics**  
Temperature Range:-25°C~+105°C
- 5.RoHS Compliant**

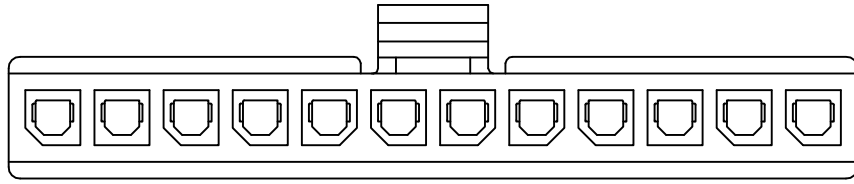


Pin	A	B
02	3.00	6.85
03	6.00	9.85
04	9.00	12.85
05	12.00	15.85
06	15.00	18.85
07	18.00	21.85
08	21.00	24.85
09	24.00	27.85
10	27.00	30.85
11	30.00	33.85
12	33.00	36.85

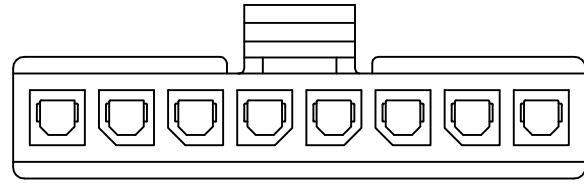
**4UCON** 元化興業股份有限公司  
4UCON TECHNOLOGY INC.

DRAWING No.		APPROVED BY		UNLESS OTHERWISE SPECIFIED TOLERANCES ARE X. ±0.30 .X ±0.25 .XX ±0.20 .XXX ±0.015
21015		EMILY		
		CHECKED BY		
		HZF		
		DRAWING BY		
		YBL		
SCALE	NONE	REV.	A1	UNIT
				mm

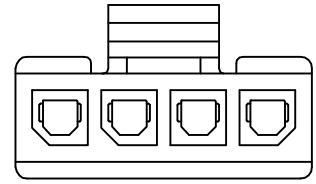
NO.	REV.	REVISIONS	CHK	DATE
△A1		Modify Data	HZF	01/08/2014
△A0		NEW RELEASE	HZF	09/26/2012



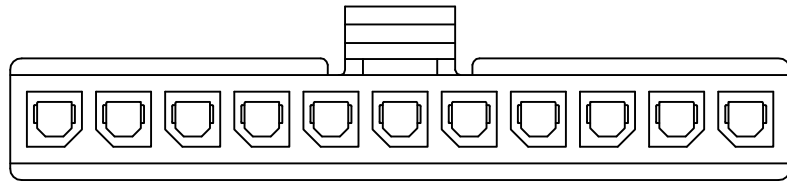
△1X12P



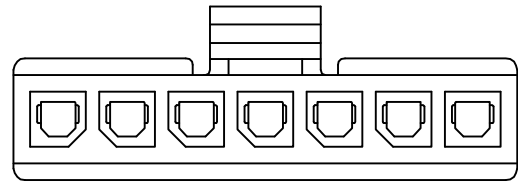
△1X08P



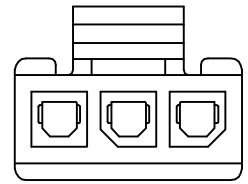
△1X04P



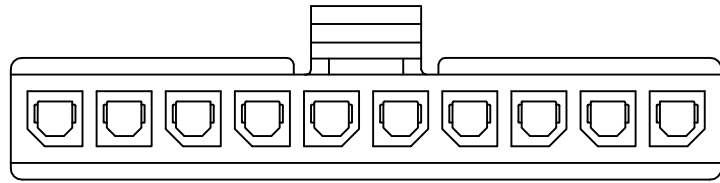
△1X11P



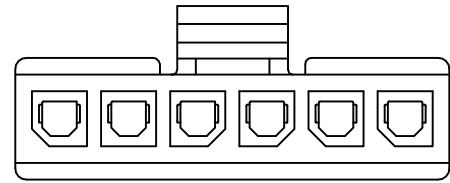
△1X07P



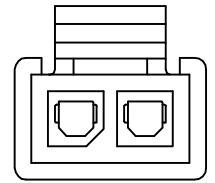
△1X03P



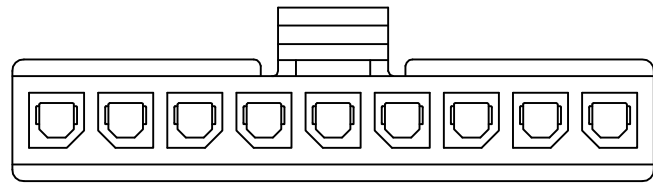
△1X10P



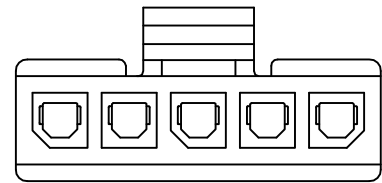
△1X06P



△1X02P



△1X09P



△1X05P

**4UCON**

元化興業股份有限公司  
4UCON TECHNOLOGY INC.

DRAWING No.

21015

APPROVED BY

EMILY

CHECKED BY

HZF

DRAWING BY

YBL

UNLESS OTHERWISE

SPECIFIED

TOLERANCES ARE

X. ±0.30

.X ±0.25

.XX ±0.20

.XXX ±0.015

SCALE

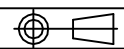
NONE

REV.

A1

UNIT

mm



NO. REV.

A1 Modify Data

A0 NEW RELEASE

REVISIONS

CHK

DATE

HZF 01/08/2014

HZF 09/26/2012