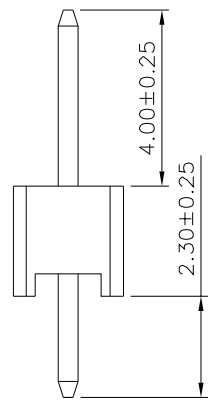
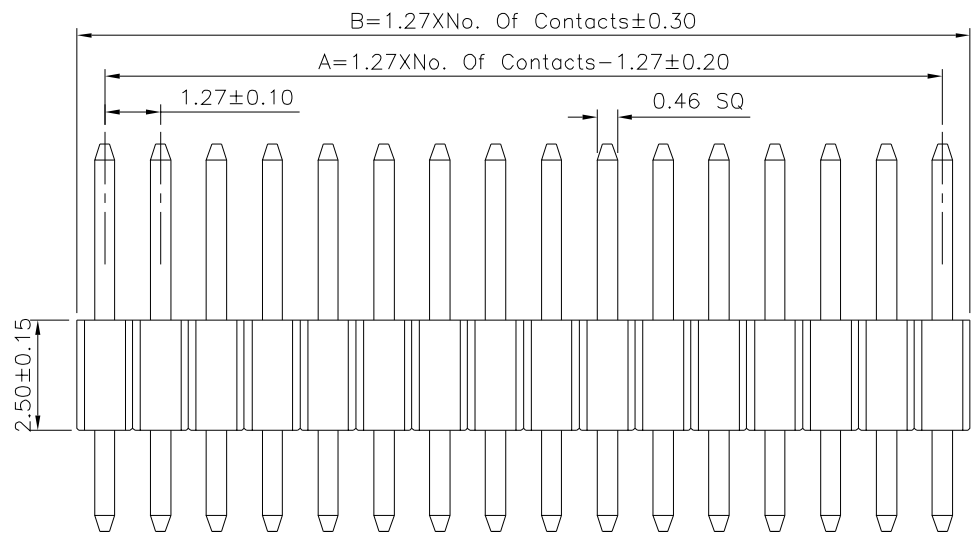
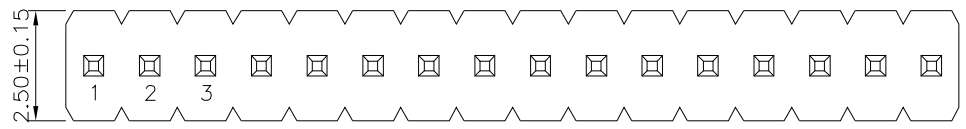


Recommended P.C.B. Layout



SPECIFICATION

Current Rating:1 Amp
 Withstand Volatge:500V AC/Minute
 Contact Resistance:20 Milliohms Max.
 Insulation Resistance:1000 Megaohms Min.
 Operation Temperature:-40°C~+105°C
 Insulator:PA6T+30%G.F.(UL94V-0),Black
 Contact:Brass,Gold Plated Over Nickel
 RoHS Compliant

Pin	A	B	Pin	A	B	Pin	A	B
02	1.27	2.54	19	22.86	24.13	36	44.45	45.72
03	2.54	3.81	20	24.13	25.40	37	45.72	46.99
04	3.81	5.08	21	25.40	26.67	38	46.99	48.26
05	5.08	6.35	22	26.67	27.94	39	48.26	49.53
06	6.35	7.62	23	27.94	29.21	40	49.53	50.80
07	7.62	8.89	24	29.21	30.48	41	50.80	52.07
08	8.89	10.16	25	30.48	31.75	42	52.07	53.34
09	10.16	11.43	26	31.75	33.02	43	53.34	54.61
10	11.43	12.70	27	33.02	34.29	44	54.61	55.88
11	12.70	13.97	28	34.29	35.56	45	55.88	57.15
12	13.97	15.24	29	35.56	36.83	46	57.15	58.42
13	15.24	16.51	30	36.83	38.10	47	58.42	59.69
14	16.51	17.78	31	38.10	39.37	48	59.69	60.96
15	17.78	19.05	32	39.37	40.64	49	60.96	62.23
16	19.05	20.32	33	40.64	41.91	50	62.23	63.50
17	20.32	21.59	34	41.91	43.18			
18	21.59	22.86	35	43.18	44.45			

4UCON 元化興業股份有限公司
 4UCON TECHNOLOGY INC.

DRAWING No.		APPROVED BY		UNLESS OTHERWISE SPECIFIED TOLERANCES ARE .X ±0.30 .XX ±0.20 .XXX ±0.10 ANG. ±2°
21054		EMILY		
		CHECKED BY HZF		
DRAWING BY		SONG		UNIT mm
SCALE	NONE	REV.	A0	

△ A0	NEW RELEASE	HZF	01/02/2013
NO. REV.	REVISIONS	CHK	DATE