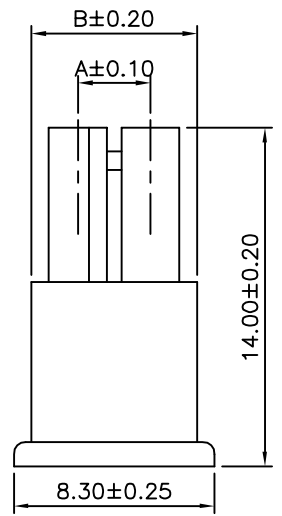
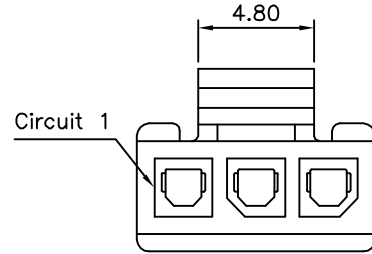
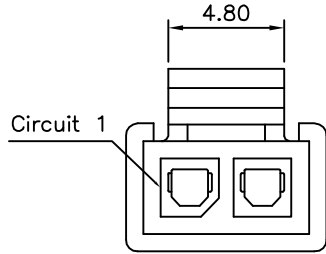
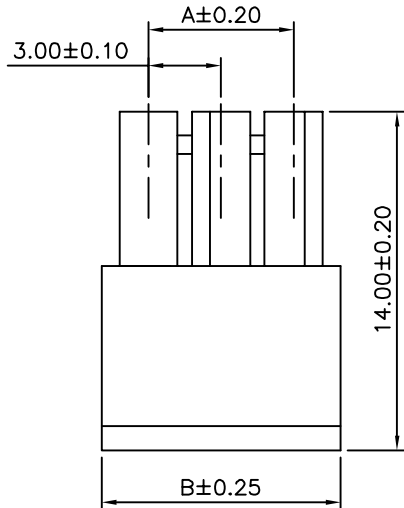
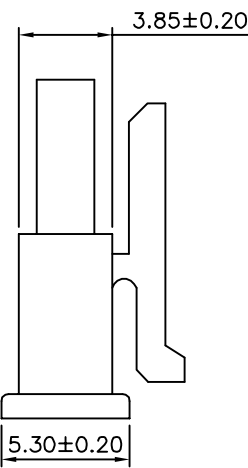


SPECIFICATION

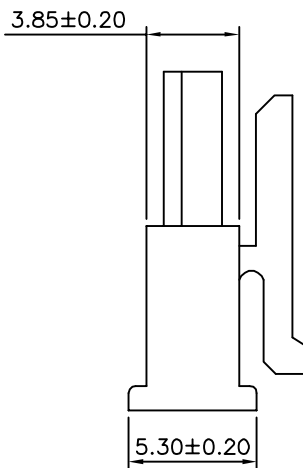
- 1.General Characteristics**
3.0mm Micro-Fit 1XXX Female
Housing Black Insulator
- 2.Material&Finish**
Housing:PA66(UL94V-2),Black
- ⚠ 3.Electrical Characteristics**
Current Rating:5A AC,DC
Voltage Rating:250V AC,DC
Insulation Resistance:1000 Megohms Min.
Withstand Voltage:1500V AC/Minute
- 4.Environmental Characteristics**
Temperature Range:-25°C~+105°C
- 5.RoHS Compliant**



2P



3P~12P



Pin	A	B
02	3.00	6.85
03	6.00	9.85
04	9.00	12.85
05	12.00	15.85
06	15.00	18.85
07	18.00	21.85
08	21.00	24.85
09	24.00	27.85
10	27.00	30.85
11	30.00	33.85
12	33.00	36.85



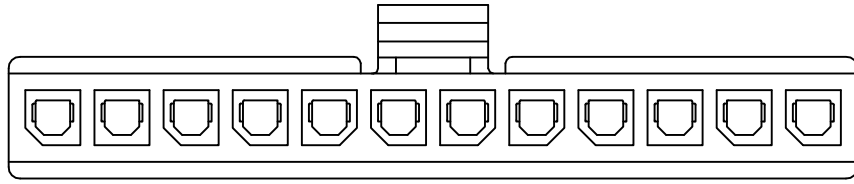
4UCON 元化興業股份有限公司
4UCON TECHNOLOGY INC.

DRAWING No. 21135
SCALE NONE

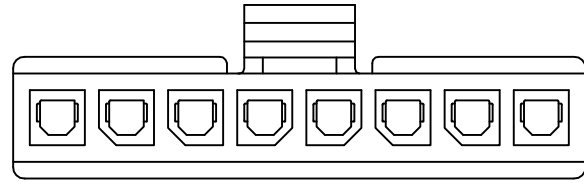
APPROVED BY EMILY
CHECKED BY HZF
DRAWING BY YBL
REV. A1

UNLESS OTHERWISE SPECIFIED TOLERANCES ARE
X. ±0.30
.X ±0.25
.XX ±0.20
.XXX ±0.015
UNIT mm

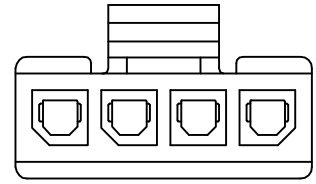
NO.	REV.	REVISIONS	CHK	DATE
⚠ A1		Modify Data	HZF	01/08/2014
⚠ A0		NEW RELEASE	HZF	09/26/2012



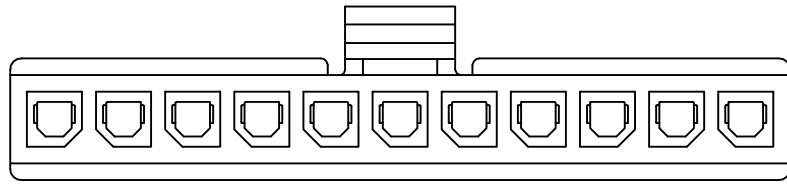
△1X12P



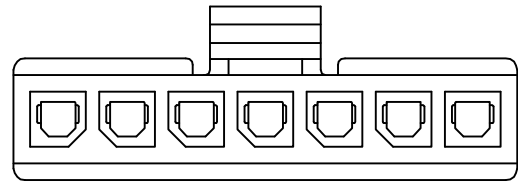
△1X08P



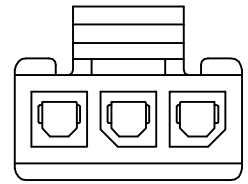
△1X04P



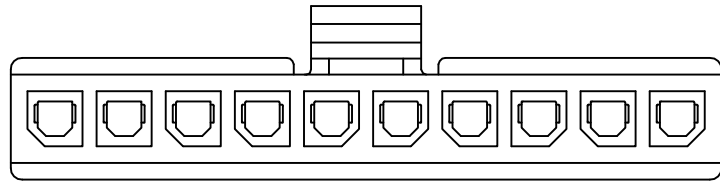
△1X11P



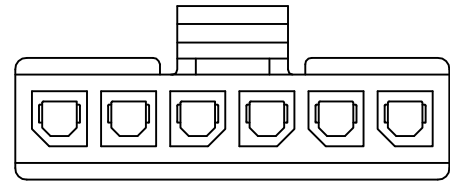
△1X07P



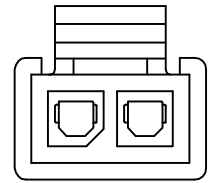
△1X03P



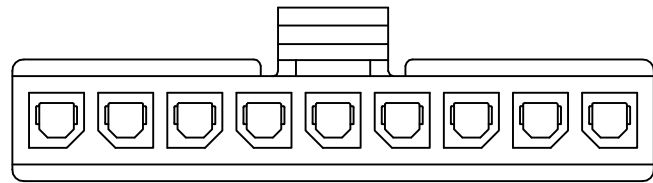
△1X10P



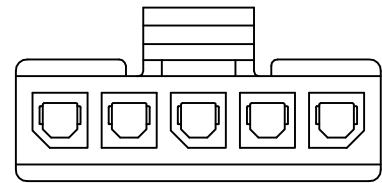
△1X06P



△1X02P



△1X09P



△1X05P

4UCON

元化興業股份有限公司
4UCON TECHNOLOGY INC.

DRAWING No.

21135

APPROVED BY

EMILY

CHECKED BY

HZF

DRAWING BY

YBL

UNLESS OTHERWISE SPECIFIED TOLERANCES ARE
X. ±0.30
.X ±0.25
.XX ±0.20
.XXX ±0.015

SCALE

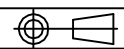
NONE

REV.

A1

UNIT

mm



NO. REV.

REVISIONS

CHK

DATE

△ A1	Modify Data	HZF	01/08/2014
△ A0	NEW RELEASE	HZF	09/26/2012