

4U CON 元化興業股份有限公司
4U CON TECHNOLOGY INC.

DRAWING No.
21503

APPROVED BY
MEI
CHECKED BY
HZF
DRAWING BY
CYP

UNLESS OTHERWISE SPECIFIED TOLERANCES ARE
X. ±0.50 X.* ±5*
.X ±0.25 .X* ±2*
.XX ±0.15 .XX* ±1*

SCALE NONE

REV. A0

UNIT mm

NO.	REV.	REVISIONS	CHK	DATE
△ A0		NEW RELEASE	HZF	04/29/2018

SPECIFICATION

1.General Characteristics

Micro SIM Connector Push Push Type 08 Pin
 SMT 90° Standoff=0mm Normal H=1.38mm
 Tape & Reel 1000 PCS/Reel

2.Material&Finish

Contact:C5210-EH,Gold Flash On Contact Area,
 Gold Flash On Solder Tails,Over Nickel
 Housing/Slider:LCP(UL94V-0),Black
 Shell:SUS304-H,Gold Flash Over Nickel

3.Electrical Characteristics

Current Rating:0.5mA Max.
 Contact Resistance:50 Milliohms Max.
 Insulation Resistance:1000 Megohms Min.
 At 500V DC

Dielectric Withstanding Voltage:500V AC/1minute

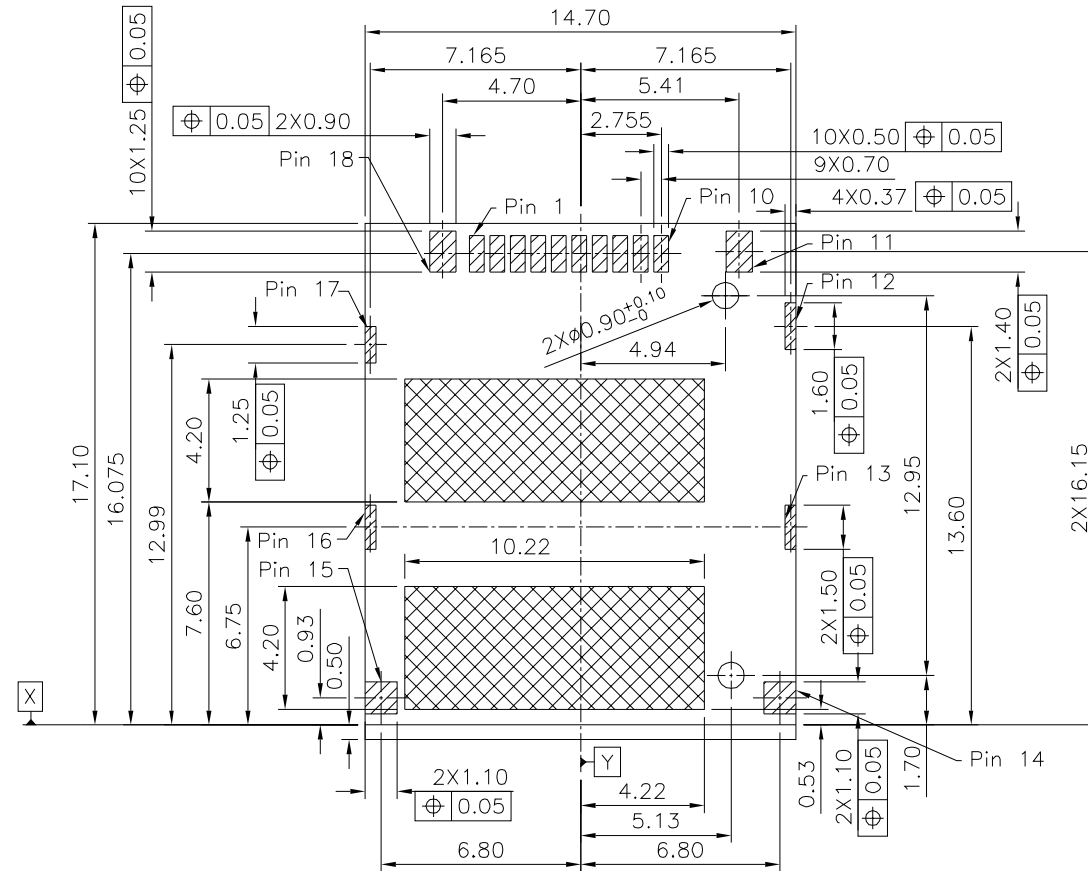
4.Mechanical Characteristics

Mating Cycles:5000 Insertions

5.Environmental Characteristics

Operation Temperature:-25°C~+85°C

6.RoHS Compliant



- PAD Area
- No Component Area
- No Trace, No Test Point, No Via Hole, No Ground Area

Recommended P.C.B. Layout
 (PCB Board Tolerance±0.05)

Pin Number	Pin Assign	Function
1	CD	SIM Card Detect
2	C8	Reserve
3	C4	Reserve
4	C7	I/O
5	C3	CLK
6	C6	Vpp
7	C2	RST
8	C5	GND
9	C1	Vcc
10	N/A	Reserve
11	GND	GND
12	GND	GND
13	GND	GND
14	GND	GND
15	GND	GND
16	GND	GND
17	GND	GND
18	GND	GND

Card Detect Switch	
Card Uninsertion	Close
Card Half Insertion	Close
Card Insertion	Open
N/O	Close Open

4UCON 元化興業股份有限公司
 4UCON TECHNOLOGY INC.

DRAWING No. 21503
 APPROVED BY MEI
 CHECKED BY HZF
 DRAWING BY CYP

UNLESS OTHERWISE SPECIFIED TOLERANCES ARE
 X. ±0.50 X.* ±5*
 .X ±0.25 .X* ±2*
 .XX ±0.15 .XX* ±1*

SCALE NONE REV. A0 UNIT mm

△ A0	NEW RELEASE	HZF	04/29/2018
NO. REV.	REVISIONS	CHK	DATE