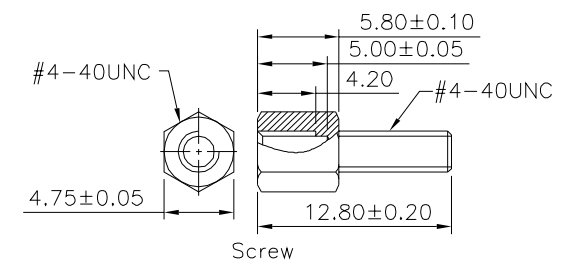
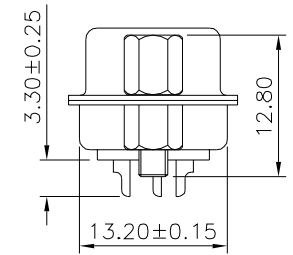
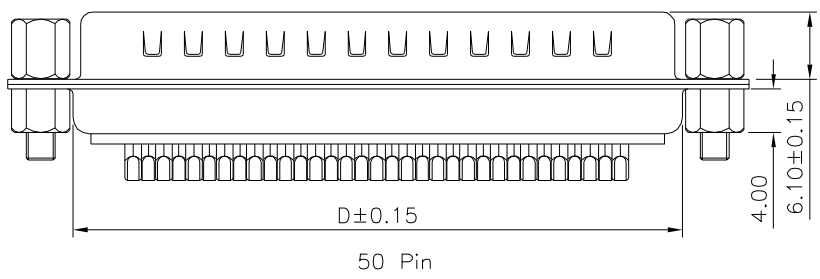
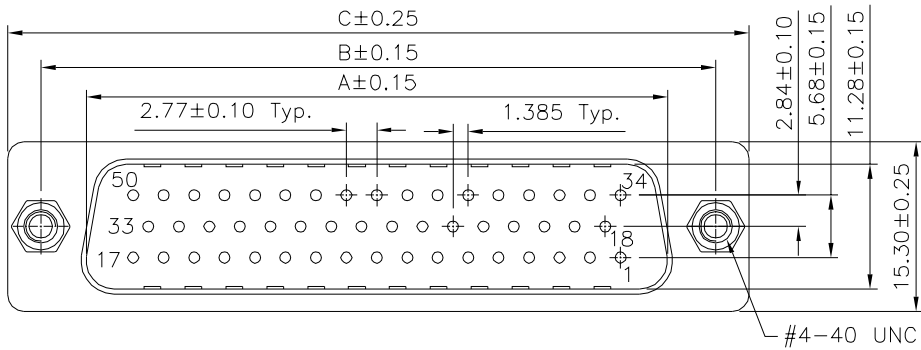
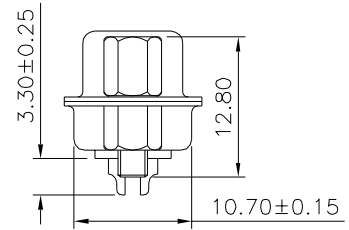
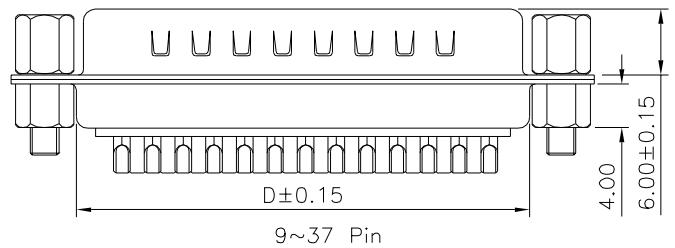
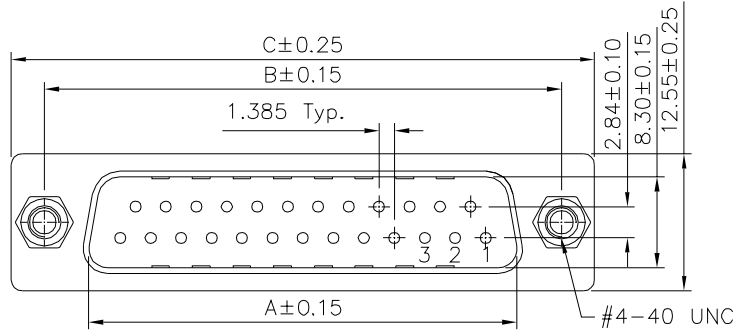


**SPECIFICATION**

Current Rating:1 Amps  
 Withstanding Voltage:500V(One Minute)  
 Contact Resistance:30 Milliohms Max.  
 Insulation Resistance:1000 Megaohms Min.  
 At DC 500V  
 Operating Temperature:-40°C~+85°C  
 Insulator:PBT+30%G.F.(UL94V-0),Blue  
 Contact:Brass,Gold Flash On Contact Area  
 Tin Plated On Solder Tails,Over Nickel  
 Shell:SPCC,Nickel Plated Front,Tin Plated Rear  
 Screw:12L14,Nickel Plated  
 Nut:C3602,Nickel Plated  
 RoHS Compliant



Pin	A	B	C	D
09	16.92	24.99	30.81	19.20
15	25.25	33.32	39.20	27.70
25	38.96	47.04	53.04	41.10
37	55.42	63.50	69.40	57.30
50	52.81	61.00	67.00	55.10

**4UCON** 元化興業股份有限公司  
 4UCON TECHNOLOGY INC.

DRAWING No.		APPROVED BY		UNLESS OTHERWISE SPECIFIED TOLERANCES ARE					
22388		MEI		.X ±0.38 .X* ±3*					
		CHECKED BY		.XX ±0.25 .XX* ±1*					
		HZF		.XXX ±0.05 .XXX* ±0.5*					
		DRAWING BY		UNIT			A1	Modify Data	HZF 08/21/2017
		CYP		mm			A0	NEW RELEASE	HZF 02/11/2017
SCALE	NONE	REV.	A1			NO.REV.	REVISIONS		CHK DATE