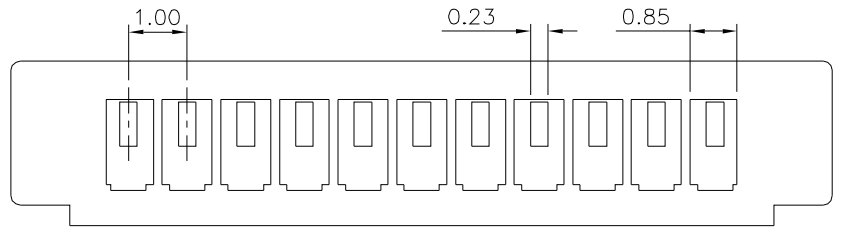
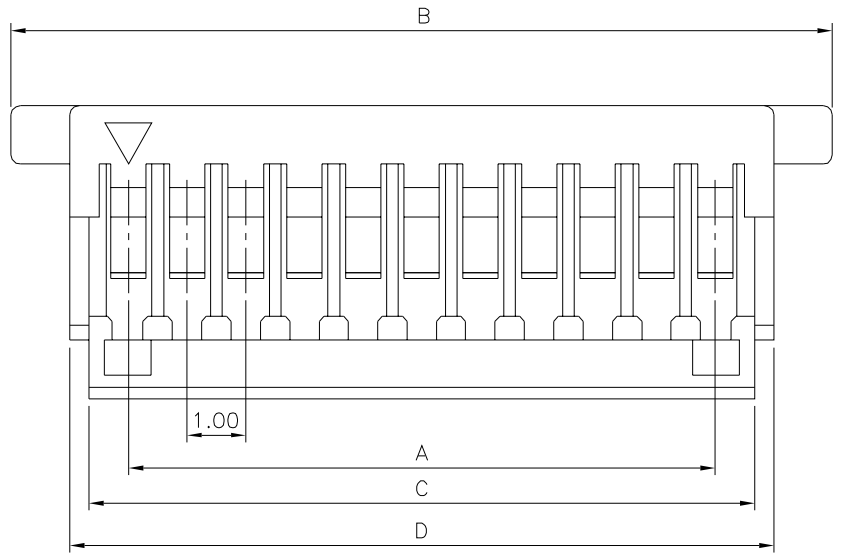


SPECIFICATION
 Current Rating:1A AC/DC
 Voltage Rating:50V AC Max.
 Dielectric Withstand Voltage:500V AC/Minute
 Insulation Resistance:100 Megaohms Min.
 Contact Resistance:20 Milliohms Max.
 Operation Temperature:-25°C~+85°C
 Insulator:PBT(UL94V-0)
 RoHS Compliant

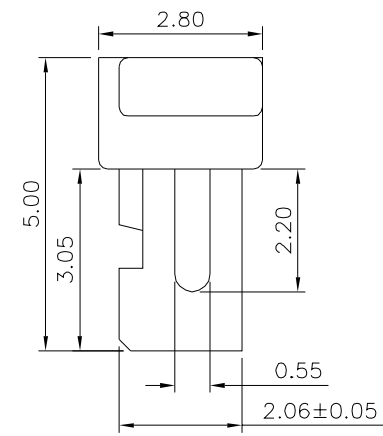
22559



△



△



△

△

Pin	B
02~10	±0.10
11~20	±0.20

△

Pin	A	B	C	D
02	1.0	5.0	2.37	3.00
03	2.0	6.0	3.37	4.00
04	3.0	7.0	4.37	5.00
05	4.0	8.0	5.37	6.00
06	5.0	9.0	6.37	7.00
07	6.0	10.0	7.37	8.00
08	7.0	11.0	8.37	9.00
09	8.0	12.0	9.37	10.00
10	9.0	13.0	10.37	11.00
11	10.0	14.0	11.37	12.00
12	11.0	15.0	12.37	13.00
13	12.0	16.0	13.37	14.00
14	13.0	17.0	14.37	15.00
15	14.0	18.0	15.37	16.00
16	15.0	19.0	16.37	17.00
20	19.0	23.0	20.37	21.00

DRAWING No. △		APPROVED BY EMILY		UNLESS OTHERWISE SPECIFIED TOLERANCES ARE △ .X ±0.25 △ .XX ±0.1 ANG.						
		CHECKED BY HZF			△ A2	Modify Data		HZF	05/22/2015	
		DRAWING BY CYP			△ A1	Modify Data		HZF	01/02/2013	
SCALE	NONE	REV.	A2	UNIT mm			NO. REV.	REVISIONS	CHK	DATE