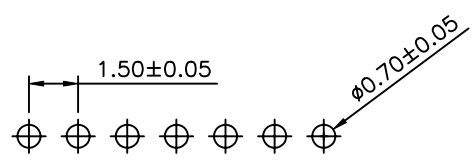
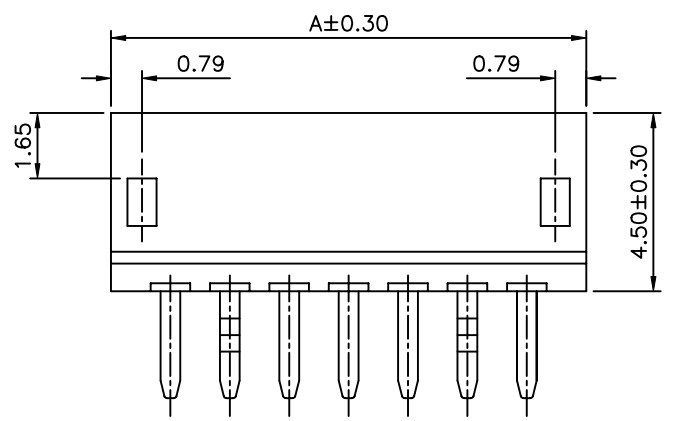
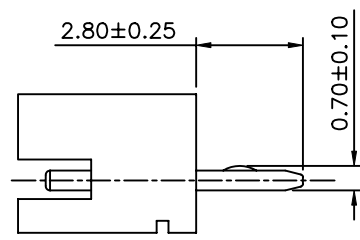
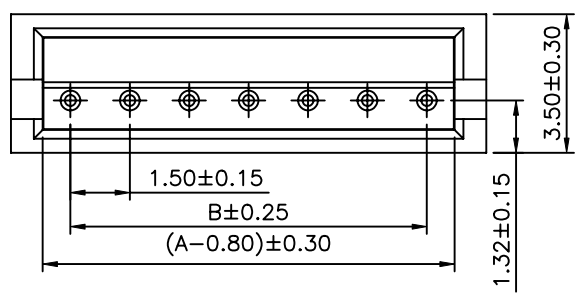


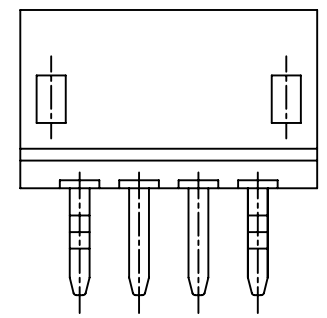
SPECIFICATION
 Current Rating: 1A AC/DC
 Voltage Rating: 50V AC/DC
 Temperature Range: -25°C ~ +85°C
 Contact Resistance: 20 Milliohms Max
 Insulation Resistance: 500 Megaohms Min
 Withstanding Voltage: 500V AC/Minute
 Pin: C2680 $\phi 0.50 \times 6.50$, Tin Plated
 Insulation: PA66+15%G.F UL94V-0, Gray
 RoHS Compliant



Recommended P.C.B Layout(Top Side)
 P.C.B Thickness=1.20mm(Tolerance=±0.05)



B Type(5~13 Pin)



A Type(2~4 Pin)

Circuits	Dim A	Dim B
2	4.50	1.50
3	6.00	3.00
4	7.50	4.50
5	9.00	6.00
6	10.50	7.50
7	12.00	9.00
8	13.50	10.50
9	15.00	12.00
10	16.50	13.50
11	18.00	15.00
12	19.50	16.50
13	21.00	18.00

4UCON 元化興業股份有限公司
 4UCON TECHNOLOGY INC.

DRAWING No.		APPROVED BY		UNLESS OTHERWISE SPECIFIED TOLERANCES ARE .X ±0.25 .XX ±0.20 .XXX ±0.10 .X* ±2* .XX* ±1*
01311		MEI		
		CHECKED BY		
		HZF		
		DRAWING BY		
		LXX		
SCALE	NONE	REV.	BO	UNIT
				mm

NO.	REV.	BO	NEW RELEASE	HZF	01/05/2009
			REVISIONS	CHK	DATE