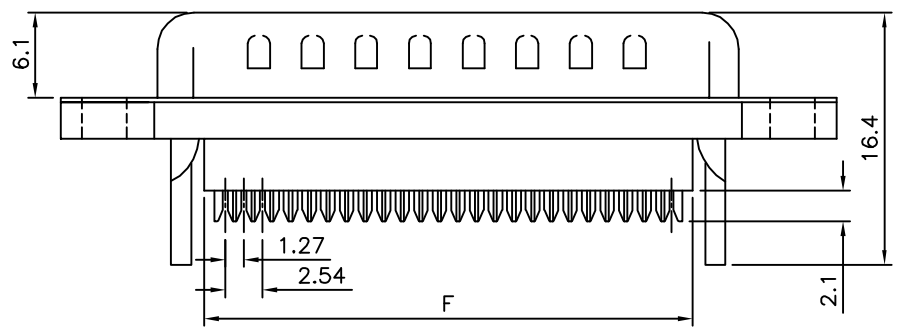
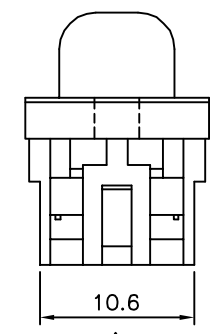


**△ SPECIFICATION**

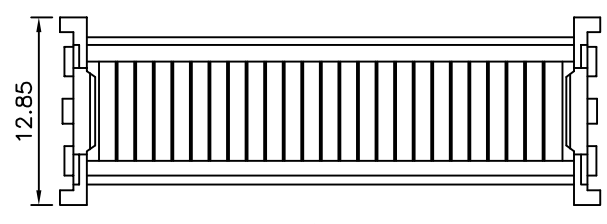
Current Rating:3 Amp  
 Voltage Rating:250V AC/RMS 60Hz  
 Contact Resistance:20 Milliohms Max. At 1 Amp DC  
 Insulation Resistance:1000 Megohms At 500V DC  
 Dielectric Withstand Voltage:1000V AC/RMS 60Hz  
 For 1 Minute  
 Insulator:PBT+G.F.(UL94V-0)  
 Contact:Copper Alloy,Selective Gold Flash Over Nickel  
 Shell:Steel,Nickel Plated Over Copper  
 S.R.:SUS304  
 RoHS Compliant



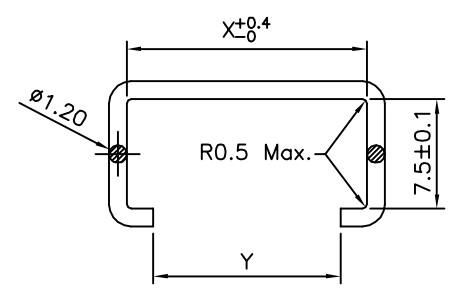
△ With Insulator Support



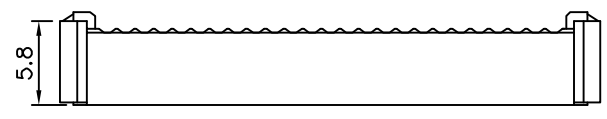
△



△



△



△ Cover

△ Pin	A	B	C	E	F	X	Y
09	30.81	24.99	16.92	11.08	13.10	16.3	12.9 <sup>+0</sup> <sub>-0.1</sub>
15	39.20	33.30	25.25	19.39	20.70	24.2	20.8 <sup>+0</sup> <sub>-0.4</sub>
25	53.04	47.04	38.96	33.24	33.68	38.6	34.9 <sup>+0</sup> <sub>-0.1</sub>
37	69.40	63.50	55.42	49.86	50.30	54.8	51.4 <sup>+0</sup> <sub>-0.1</sub>

**4UCON** 元化興業股份有限公司  
 4UCON TECHNOLOGY INC.

DRAWING No.		APPROVED BY		UNLESS OTHERWISE SPECIFIED TOLERANCES ARE △ X. ±0.38 X.* ±3* .X ±0.25 .X* ±1.0* .XX ±0.13
03022		MEI		
		CHECKED BY		
		HZF		
		DRAWING BY		
		SONG		
SCALE	NONE	REV.	A1	UNIT
				mm

NO.	REV.	REVISIONS	CHK	DATE
△ A1		Modify Data	HZF	05/28/2013
△ A0		NEW RELEASE		