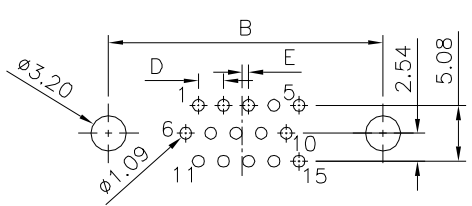
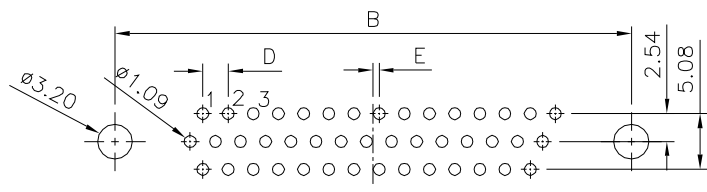


**△△ SPECIFICATION**

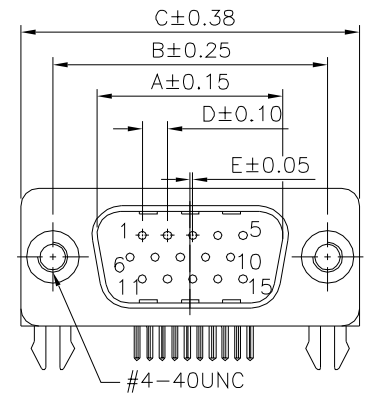
- △ Current Rating: 1 Amp
- Withstanding Voltage: 500V For 1 Minute
- △ Contact Resistance: 30 Milliohms Max.
- Insulation Resistance: 1000 Megaohms Min.  
At 500V DC
- Operating Temperature: -40°C ~ +85°C
- Insulator: PBT+30%G.F.(UL94V-0), Black
- Contact: C2680  
Gold Flash On Contact Area,  
Tin Plated On Solder Tails, Over Nickel
- Shell: SPCC, Nickel Plated
- Boardlock: SPCC, Tin Plated
- Rivet: C3604, Nickel Plated
- RoHS Compliant



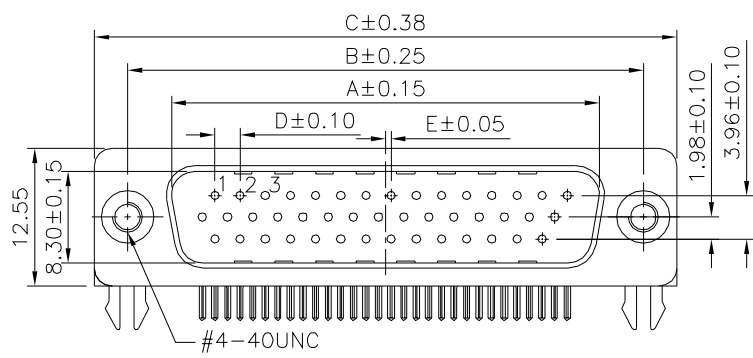
△ Recommended P.C.B. Layout For 15 Pin



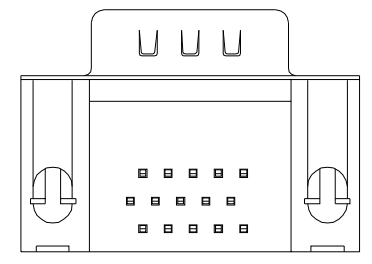
△ Recommended P.C.B. Layout For 26,44,62 Pin



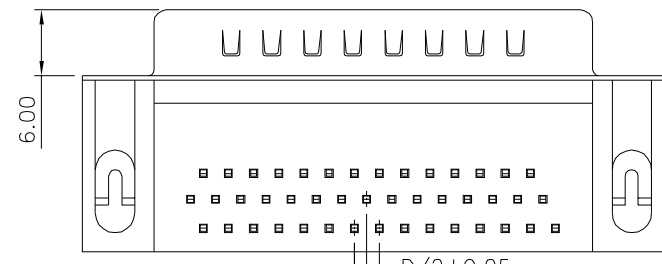
△



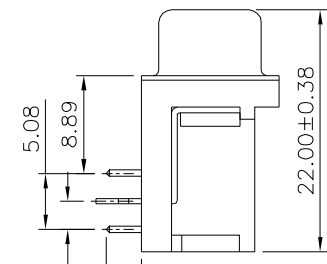
△



△△



△△



△△

Pin	A	B	C	D	E
15	16.92	24.99	30.81	2.29	0.25
26	25.25	33.32	39.20	2.29	0.50
44	38.96	47.04	53.04	2.29	0.50
62	55.42	63.50	69.40	2.41	0.60

**4UCON** 元化興業股份有限公司  
4UCON TECHNOLOGY INC.

DRAWING No. △△  
**02642**

APPROVED BY MEI  
CHECKED BY HZF  
DRAWING BY CYP

UNLESS OTHERWISE SPECIFIED TOLERANCES ARE  
 △.X ±0.38 .XX\* ±3\*  
 .XX ±0.25 .XX\* ±1\*  
 .XXX ±0.05 .XXX\* ±0.5  
 UNIT mm

NO.	REV.	REVISIONS	CHK	DATE
△	A3	Modify Data	HZF	11/16/2018
△	A2	Modify Data	HZF	08/10/2013
△	A1	Modify Data	HZF	06/29/2012
△	A0	NEW RELEASE	HZF	07/12/2008

SCALE NONE

REV. A3

