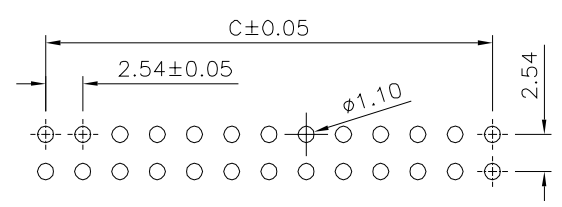
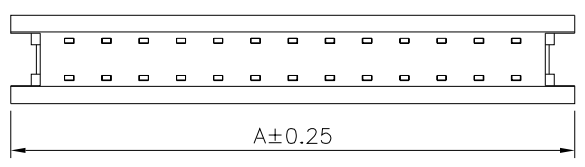
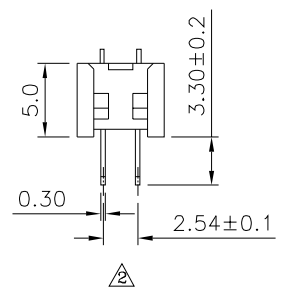
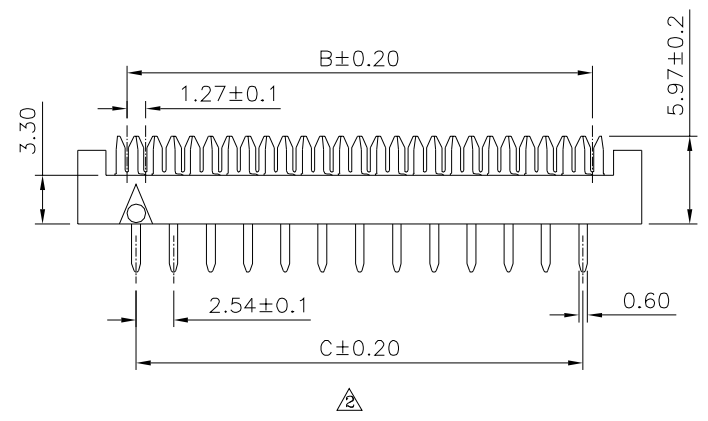
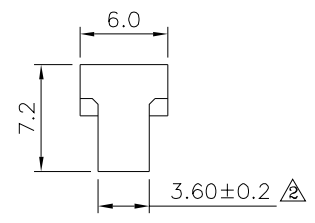
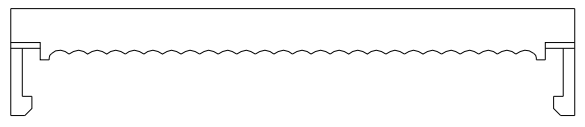
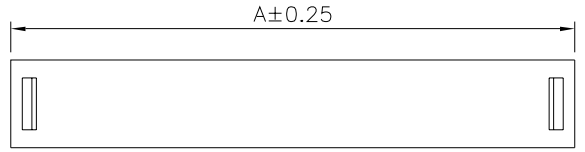


SPECIFICATION

Current Rating:1 Amp
 Withstanding Voltage:500V AC/Minute
 ⚠ Contact Resistance:15 Milliohms Max.
 Insulation Resistance:1000 Megaohms Min.
 At 500V DC
 Operating Temperature:-40°C~+105°C
 ⚠ Insulator:PBT+30%G.F.(UL94V-0),Black
 Contact:Brass,Selective Gold Plated Over Nickel
 RoHS Compliant



Recommended P.C.B. Layout

Pin	A	B	C
06	13.07	6.35	5.08
08	15.61	8.89	7.62
10	18.15	11.43	10.16
12	20.69	13.97	12.70
14	23.23	16.51	15.24
16	25.77	19.05	17.78
18	28.31	21.59	20.32
20	30.85	24.13	22.86
24	35.93	29.21	27.94
26	38.47	31.75	30.48
30	43.55	36.83	35.56
34	48.63	41.91	40.64
36	51.17	44.45	43.18
40	56.25	49.53	48.26
50	68.95	62.23	60.96
60	81.65	74.93	73.66
64	86.73	80.01	78.74

4UCON 元化興業股份有限公司
 4UCON TECHNOLOGY INC.

DRAWING No.		APPROVED BY		UNLESS OTHERWISE SPECIFIED TOLERANCES ARE X. ±0.2 .X ±0.1 .XX ±0.05 .XXX ±0.02
03753		MEI		
		CHECKED BY		
SCALE		DRAWING BY		UNIT mm
		NONE		
REV.	B2	NO. REV.		REVISIONS

⚠ B2	Modify Data	HZF	06/15/2023
⚠ B1	Modify Data	HZF	07/06/2020
⚠ B0	NEW RELEASE	HZF	10/09/2019
NO. REV.	REVISIONS	CHK	DATE