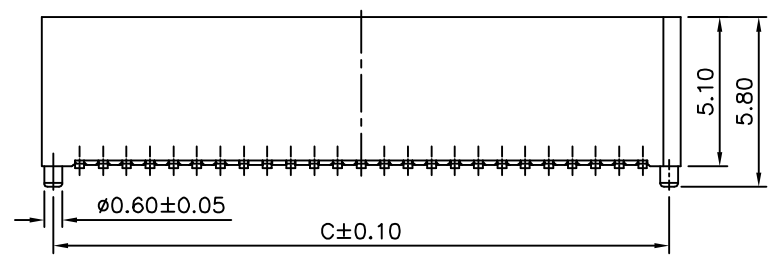
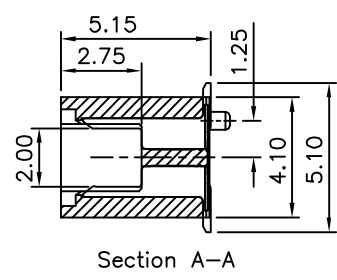
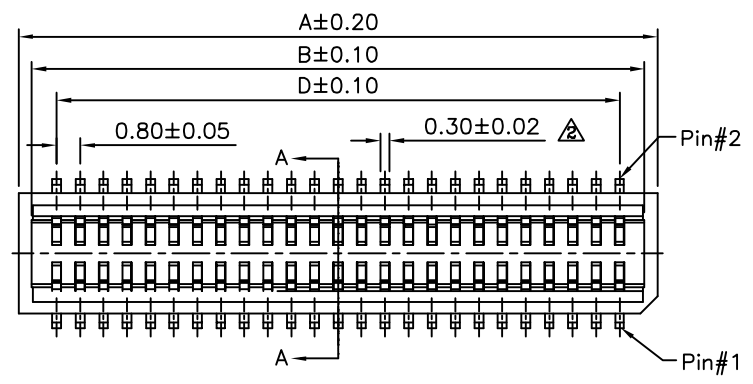
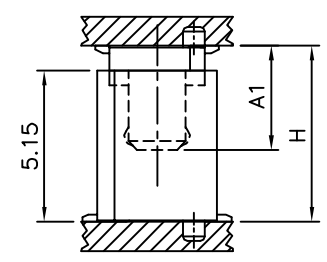


- △ SPECIFICATION**
- General Characteristics:**
0.8mm Board To Board Male XXP SMT 180°
With Post Stacking Height=6.0mm
 - Material&Finish:**
Insulator:PA46(UL94V-0),Beige
Contact:Phosphor Bronze,Gold Plated
 - Electrical Characteristics:**
Current Rating:0.5Amp AC/DC
Voltage Rating:100V AC/DC
Insulation Resistance:100 Megaohms Min.
Withstanding Voltage:500V(RMS) For One Minute
Contact Resistance:40 Milliohms Max.
 - Environmental Characteristics:**
Operation Temperature Range:-40°C~+105°C
 - RoHS Compliant**



| Male Series No. | Female Series No. | A1 | H |
|-----------------|-------------------|------|------|
| 1634 | 1636 | 3.55 | 6.00 |



| Pin | A | B | C | D | Pin | A | B | C | D |
|-----|-------|-------|-------|-------|-----|-------|-------|-------|-------|
| 10 | 6.20 | 4.90 | 5.00 | 3.20 | 34 | 15.80 | 14.50 | 14.60 | 12.80 |
| 12 | 7.00 | 5.70 | 5.80 | 4.00 | 36 | 16.60 | 15.30 | 15.40 | 13.60 |
| 14 | 7.80 | 6.50 | 6.60 | 4.80 | 38 | 17.40 | 16.10 | 16.20 | 14.40 |
| 16 | 8.60 | 7.30 | 7.40 | 5.60 | 40 | 18.20 | 16.90 | 17.00 | 15.20 |
| 18 | 9.40 | 8.10 | 8.20 | 6.40 | 50 | 22.20 | 20.90 | 21.00 | 19.20 |
| 20 | 10.20 | 8.90 | 9.00 | 7.20 | 60 | 26.20 | 24.90 | 25.00 | 23.20 |
| 22 | 11.00 | 9.70 | 9.80 | 8.00 | 68 | 29.40 | 28.10 | 28.20 | 26.40 |
| 24 | 11.80 | 10.50 | 10.60 | 8.80 | 70 | 30.20 | 28.90 | 29.00 | 27.20 |
| 26 | 12.60 | 11.30 | 11.40 | 9.60 | 80 | 34.20 | 32.90 | 33.00 | 31.20 |
| 28 | 13.40 | 12.10 | 12.20 | 10.40 | 90 | 38.20 | 36.90 | 37.00 | 35.20 |
| 30 | 14.20 | 12.90 | 13.00 | 11.20 | 100 | 42.20 | 40.90 | 41.00 | 39.20 |
| 32 | 15.00 | 13.70 | 13.80 | 12.00 | | | | | |

4UCON 元化興業股份有限公司
4UCON TECHNOLOGY INC.

| | | | | |
|-------------|------|-----------------|----|--|
| DRAWING No. | | APPROVED BY | | UNLESS OTHERWISE SPECIFIED TOLERANCES ARE .X ±0.20 .XX ±0.15 ANG. |
| 05392 | | MEI | | |
| | | CHECKED BY HZF | | |
| | | DRAWING BY SONG | | |
| SCALE | NONE | REV. | A2 | UNIT mm |

| NO. | REV. | REVISIONS | CHK | DATE |
|-----|------|-------------|-------|------------|
| △A2 | | Modify Data | HZF | 08/11/2011 |
| △A1 | | Modify Data | HZF | 12/25/2009 |
| △A0 | | NEW RELEASE | BECKY | 02/17/2005 |