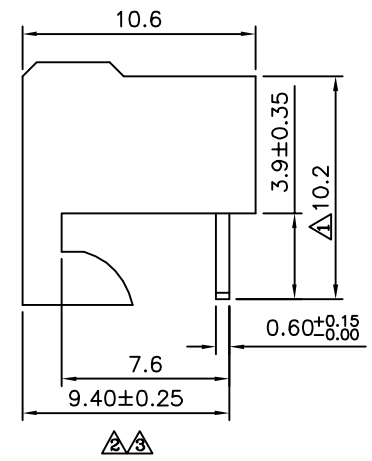
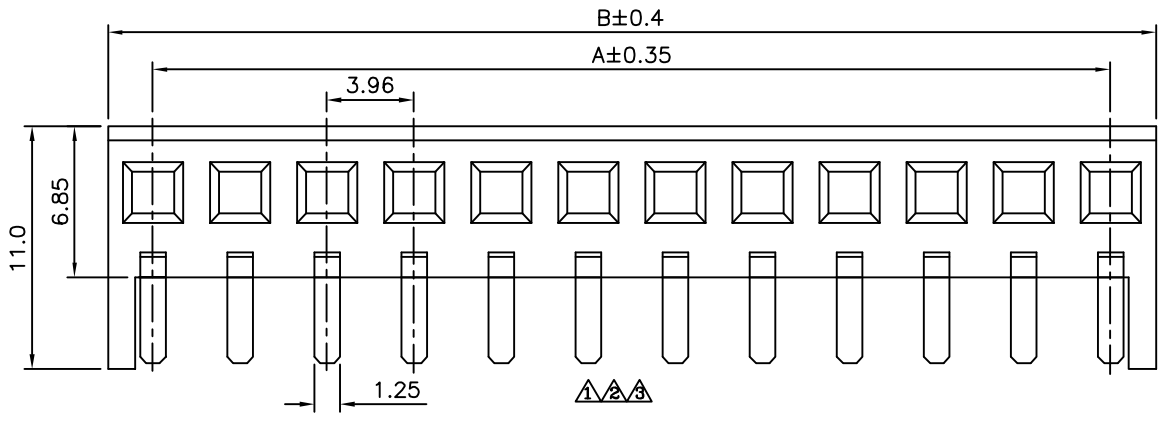
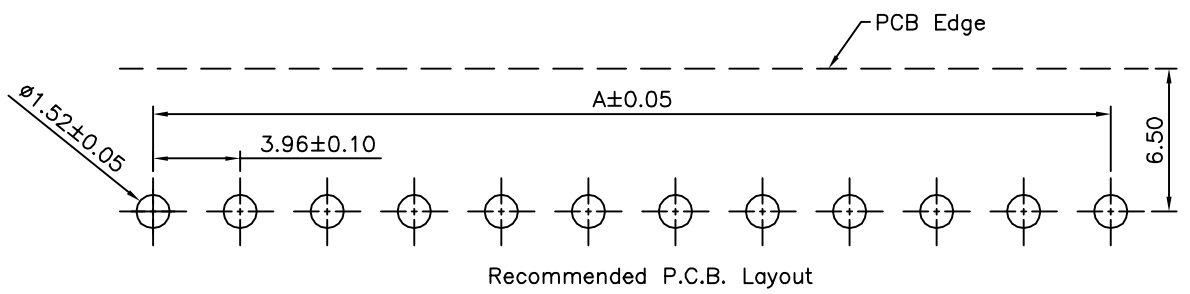


**△△ SPECIFICATION**  
 Current:5A Max.  
 Voltage:250V AC Max.  
 Insulation Resistance:1000 Megohms Min.  
 Contact Resistance:10 Milliohms Max.  
 Dielectric Withstanding Voltage:1500V AC  
 △ Non Operating Temperature:0°C~+75°C  
 Insulator:PA66(UL94V-2),White  
 Contact:Brass,Tin Plated Over Nickel  
 RoHS Compliant



Pin	A	B
02	3.96	8.06
03	7.92	12.02
04	11.88	15.98
05	15.84	19.94
06	19.80	23.90
07	23.76	27.86
08	27.72	31.82
09	31.68	35.78
10	35.64	39.74
11	39.60	43.70
12	43.56	47.66
13	47.52	51.62
14	51.48	55.58
15	55.44	59.54
16	59.40	63.50

**4U CON** 元化興業股份有限公司  
 4U CON TECHNOLOGY INC.

DRAWING No.		APPROVED BY	
05533		MEI	
		CHECKED BY	
		HZF	
DRAWING BY		CYP	
SCALE	NONE	REV.	B3

UNLESS OTHERWISE SPECIFIED TOLERANCES ARE  
 .X ±0.35  
 .XX ±0.10  
 ANG

UNIT mm

NO.	REV.	REVISIONS	CHK	DATE
△ B3		Modify Data	HZF	04/09/2015
△ B2		Modify Data	HZF	02/26/2013
△ B1		Modify Data	HZF	12/25/2009
△ B0		NEW RELEASE	HZF	10/05/2008