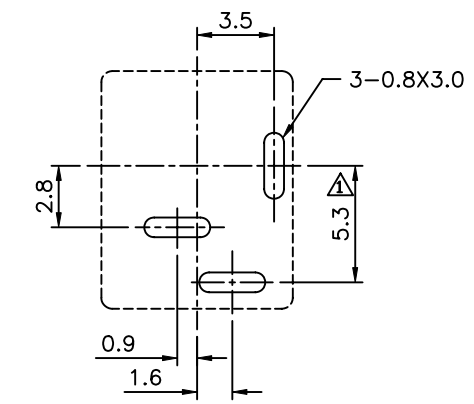
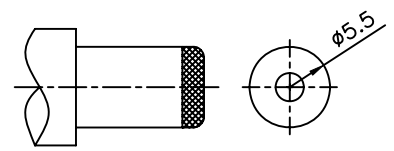
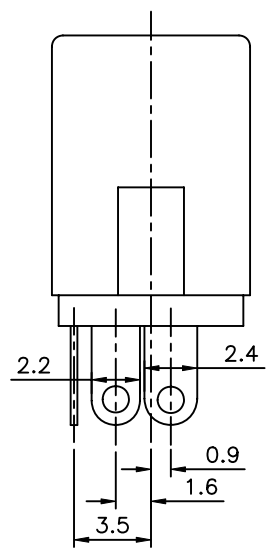


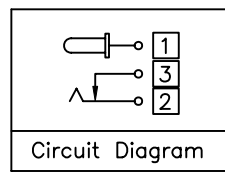
△ SPECIFICATION
 △ Rating:DC 20V 2A
 Withstand Voltage:500V AC
 △ Contact Resistance:50 Milliohms Max.
 Insulation Resistance:100 Megaohms Min. (DC 500V)
 Operation Temperature Range:-20°C~+70°C
 Preservative Temperature Range:-40°C~+85°C
 △ Insertion And Extraction Force:3~30N
 Life Test:5000 Cycles
 RoHS Compliant



△ Recommended P.C.B. Layout (Copper Sided View)



△ DC Mate Plug



Circuit Diagram

⑥	Shunt Terminal	③	1	Brass	Silver Plated
⑤	Tip Spring	②	1	Mn Steel	Silver Plated
④	Center Pin Terminal	①	1	Brass	Silver Plated
③	Center Pin	①	1	Brass	Nickel Plated
②	Cover		1	PF	--
①	Housing		1	PBT	Black
No.	Description	Q'ty	Material	Remark	

○ :Item No. □ :Terminal No.

4UCON 元化興業股份有限公司
 4UCON TECHNOLOGY INC.

DRAWING No.		APPROVED BY		UNLESS OTHERWISE SPECIFIED TOLERANCES ARE △ X. ±0.3 .X ±0.3 .XX ±0.3 ANG. ±2°
05540		MEI		
		HZF		
		DRAWING BY		UNIT mm
		QQJ		
SCALE	NONE	REV.	A3	

△ A3	Modify Data	HZF	05/31/2010
△ A2	Modify Current 0.5A---1.5A	HZF	08/06/2008
△ A1	Modify Dim. & Spec.	HZF	11/16/2007
△ A0	NEW RELEASE	BECKY	12/09/2005
NO. REV.	REVISIONS	CHK	DATE