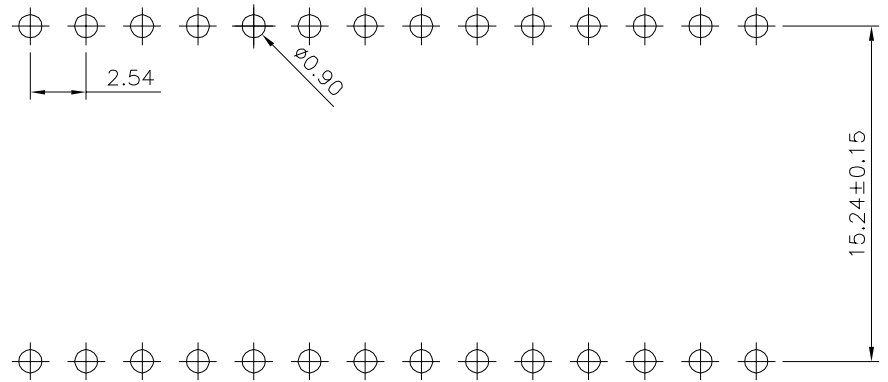
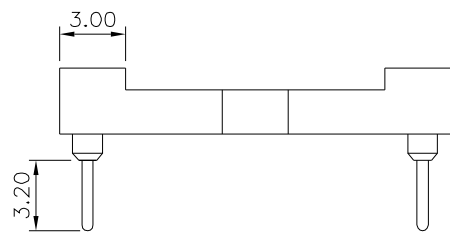
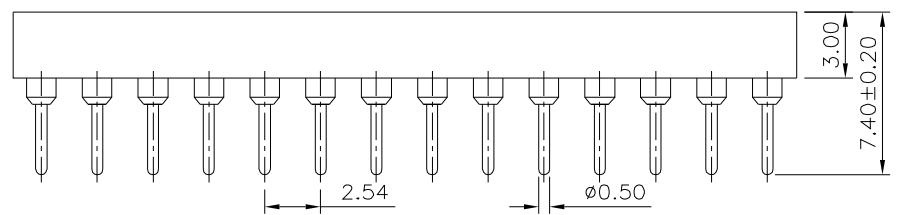
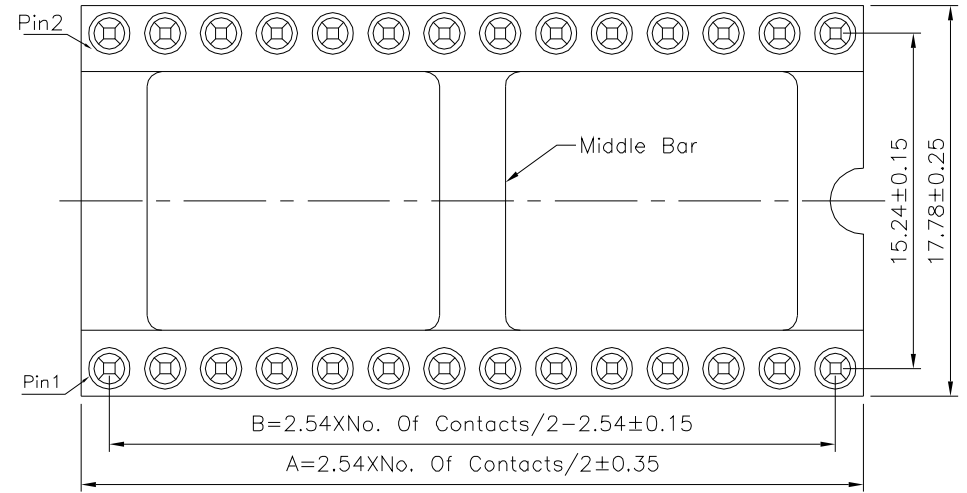


SPECIFICATION

Current Rating:3 Amps/Contact Max.
 Contact Resistance:4 Milliohms/Contact Max.
 Insulation Resistance:1000 Megaohms Min. At 100V
 Operating Voltage:60V AC/DC
 Average Insertion Force With Steel Pin Of
 ø0.43mm:<250g
 Average Withdrawal Force With Steel Pin Of
 ø0.43mm:>50g
 Mechanical Life Cycle:200 Min.
 Operating Temperatures:Gold Plated:-55°C~+105°C
 Tin Plated:-40°C~+105°C
 Soldering Temperature:+220°C,10s Max.
 Pin(Outer Sleeve):Brass,Tin Plated Over Nickel
 Clip(Contact 4 Finger):Beryllium Copper,Gold Flash
 Over Nickel
 Insulator(Housing):PBT+30%G.F.(UL94V-0),Black
 RoHS Compliant



Recommended P.C.B. Layout



Pin	A	B	Type
20	25.40	22.86	Without Bar
24	30.48	27.94	With Bar
28	35.56	33.02	
32	40.64	38.10	
40	50.80	48.26	
42	53.34	50.80	With Bar
48	60.96	58.42	
64	81.28	78.74	

4UCON 元化興業股份有限公司
 4UCON TECHNOLOGY INC.

DRAWING No. 05902
 SCALE NONE

APPROVED BY MEI
 CHECKED BY HZF
 DRAWING BY CYP
 REV. BO

UNLESS OTHERWISE SPECIFIED TOLERANCES ARE
 X. ±0.50
 XX ±0.40
 XXX ±0.25
 .XXX ±0.15
 ANG. ±5°
 UNIT mm

NO.	REV.	REVISIONS	CHK	DATE
△ BO		NEW RELEASE	HZF	09/15/2021