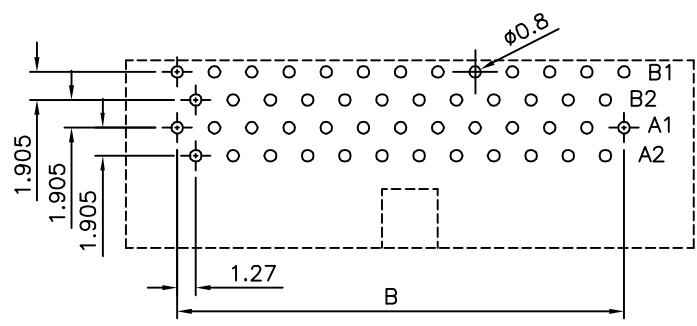
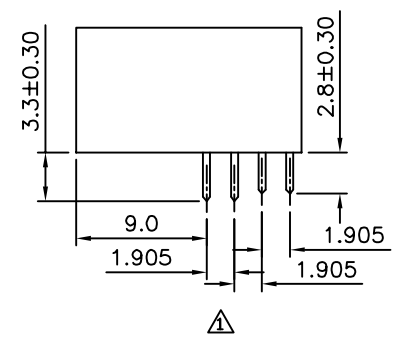
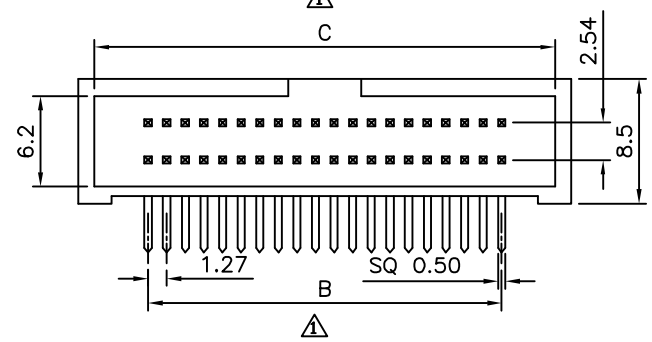
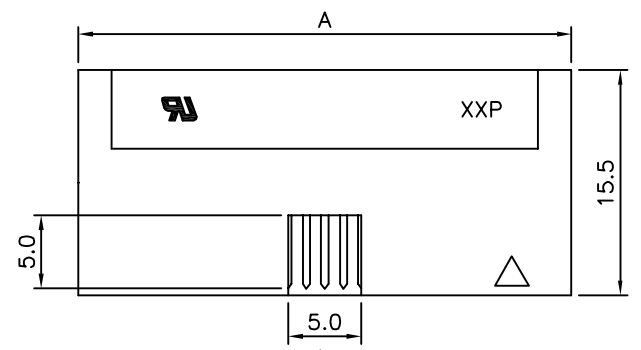


△ Recommended P.C.B. Layout (Top View)
(20,32,40,52,60,68,80,100 Pin)



△ Recommended P.C.B. Layout (Top View)
(26,34,50 Pin)

△ SPECIFICATION
 Current Rating: 1 Amp
 Withstand Voltage: 500V AC For 1 Minute
 Contact Resistance: 20 Milliohms Max. At 100mA DC
 Insulation Resistance: 1000 Megaohms Min. At 250V DC
 Operation Temperature: -55°C ~ +105°C
 Contact: Brass, Gold Flash On Contact Area, Tin
 Plated On Solder Tails, Over Nickel
 Insulator: PBT+G.F.(UL94V-0), Black
 RoHS Compliant



Pin	A	B	C
20	20.95	11.43	18.75
26	24.76	15.24	22.56
32	28.57	19.05	26.37
34	29.84	20.32	27.64
40	33.65	24.13	31.45
50	40.00	30.48	37.80
52	41.27	31.75	39.07
60	46.35	36.83	44.15
68	51.43	41.91	49.23
80	59.05	49.53	56.85
100	71.75	62.23	69.55

4UCON 元化興業股份有限公司
4UCON TECHNOLOGY INC.

DRAWING No. 06587
 APPROVED BY EMILY
 CHECKED BY HZF
 DRAWING BY CYP
 SCALE NONE REV. A1
 UNIT mm

UNLESS OTHERWISE SPECIFIED TOLERANCES ARE
 △ X. ±0.5
 .X ±0.25
 .XX ±0.15

△ A1	Modify Data	HZF	10/24/2015
△ A0	NEW RELEASE		
NO. REV.	REVISIONS	CHK	DATE