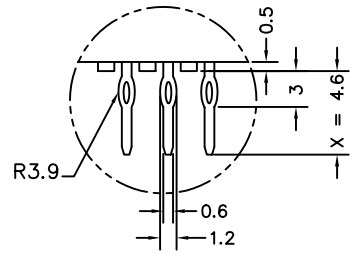
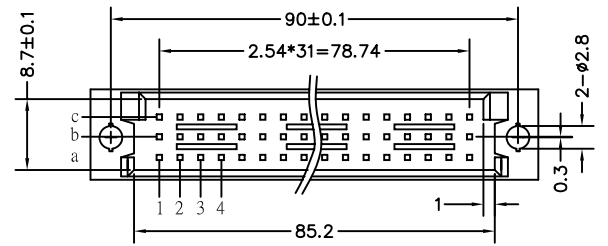


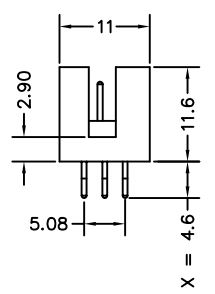
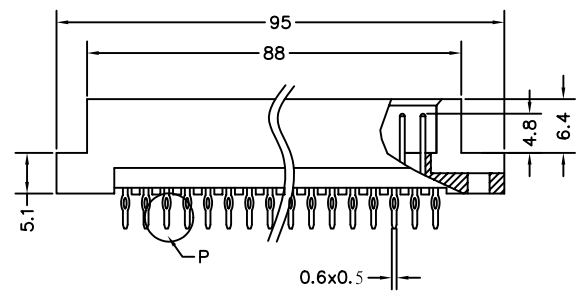
P.C.Board Layout

SPECIFICATIONS

Current Rating : 2AMP
 Dielectric Withstanding Voltage : AC 1000V For 1 Minute
 Insulator Resistance : 1000M Ohms Min At DC 500V
 Contact Resistance : 30m Ohms Max At DC 100mA
 Operating Temperature : -55°C to +105°C
 Housing : 30% Glass Filled PBT UL94V-0
 Contacts : Brass



Detail P



Pitch	x length position	Rows with Contacts		Contact Arrange	
		1	2	W1	W2
2.54mm	96	a	b c	□	□
	64	a	- c	+	+
	32	a	- -	+	+
5.08mm	48	a	b c	□	□
	32	a	- c	+	+
	16	a	- -	+	+

4UCON 元化興業股份有限公司
 4UCON TECHNOLOGY INC.

DRAWING No.
 07792

APPROVED BY MEI
 CHECKED BY RAN
 DRAWING BY HZF

UNLESS OTHERWISE SPECIFIED
 TOLERANCES ARE
 .X ±0.38
 .XX ±0.25
 ANG.

SCALE NONE REV. A UNIT mm AREA REVISIONS CHK DATE