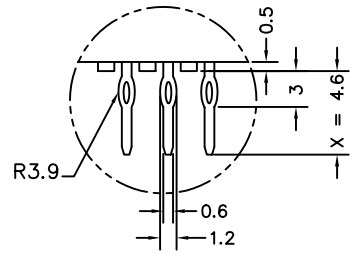
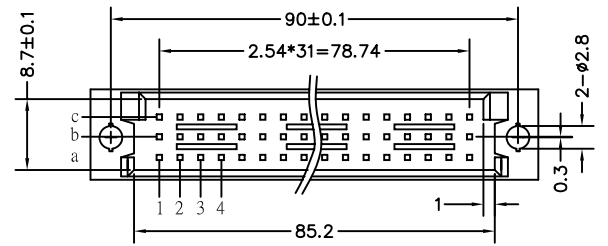


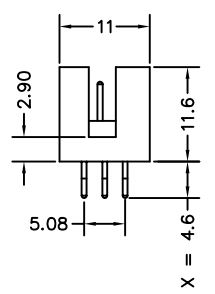
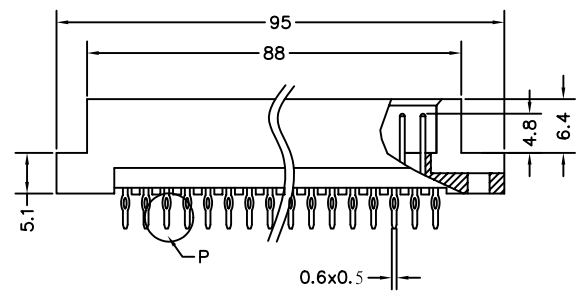
P.C.Board Layout

**SPECIFICATIONS**

Current Rating : 2AMP  
 Dielectric Withstanding Voltage : AC 1000V For 1 Minute  
 Insulator Resistance : 1000M Ohms Min At DC 500V  
 Contact Resistance : 30m Ohms Max At DC 100mA  
 Operating Temperature : -55°C to +105°C  
 Housing : 30% Glass Filled PBT UL94V-0  
 Contacts : Brass



Detail P



Pitch	x length position	Rows with Contacts		Contact Arrange	
		1	2	W1	W2
2.54mm	96	a	b c	□	□
	64	a	- c	+	+
	32	a	- -	+	+
5.08mm	48	a	b c	□	□
	32	a	- c	+	+
	16	a	- -	+	+

**4UCON** 元化興業股份有限公司  
 4UCON TECHNOLOGY INC.

DRAWING No.  
 07793

APPROVED BY MEI  
 CHECKED BY RAN  
 DRAWING BY HZF

UNLESS OTHERWISE SPECIFIED TOLERANCES ARE  
 .X ±0.38  
 .XX ±0.25  
 ANG.

SCALE NONE REV. A UNIT mm AREA REVISIONS CHK DATE