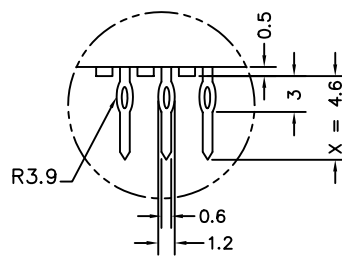
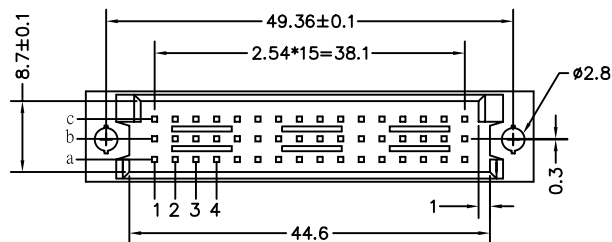


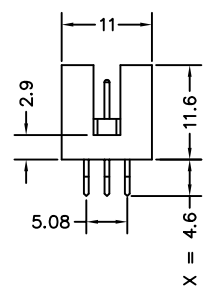
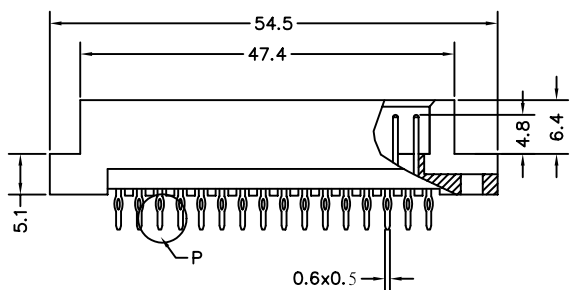
P.C.Board Layout

SPECIFICATIONS

Current Rating : 2AMP
 Dielectric Withstanding Voltage : AC 1000V For 1 Minute
 Insulator Resistance : 1000M Ohms Min At DC 500V
 Contact Resistance : 30m Ohms Max At DC 100mA
 Operating Temperature : -55°C to +105°C
 Housing : 30% Glass Filled PBT UL94V-0
 Contacts : Brass



Detail P



Pitch	x length position	Rows with Contacts		Contact Arrange	
		1 4.6	2 6.3	W1 13	W2 17
2.54mm	48	a b c			
	32	a - c			
	16	a - -			
5.08mm	24	a b c			
	16	a - c			
	8	a - -			

4UCON 元化興業股份有限公司
 4UCON TECHNOLOGY INC.

DRAWING No.
 07800

APPROVED BY MEI
 CHECKED BY RAN
 DRAWING BY HZF

UNLESS OTHERWISE SPECIFIED TOLERANCES ARE
 .X ±0.38
 .XX ±0.25
 ANG.

SCALE NONE REV. A

UNIT mm

AREA REVISIONS CHK DATE