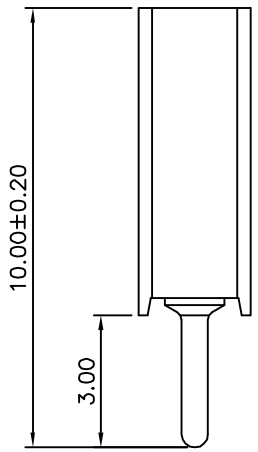
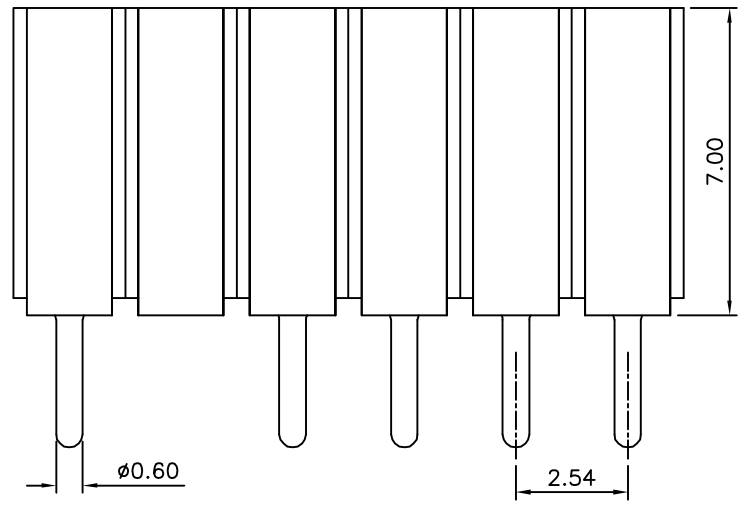
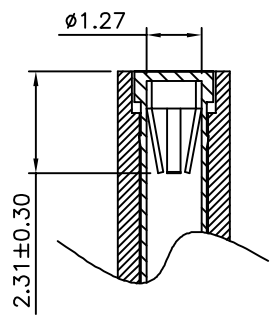
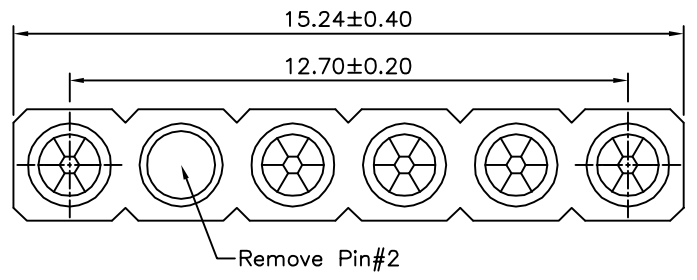


Recommended P.C.B. Layout



SPECIFICATION

Current Rating:3 Amps/Contact Max.
 Contact Resistance:4 Milliohms/Contact Max.
 Insulation Resistance:1000 Megaohms Min. At 100V
 Operating Voltage:60V AC/DC
 Average Insertion Force With Steel Pin Of
 $\phi 0.66\text{mm}$:<140g
 Average Withdrawal Force With Steel Pin Of
 $\phi 0.66\text{mm}$:>25g Min.
 Mechanical Life Cycle:200 Min.
 Operating Temperature:Gold Plated:-55°C~+105°C
 Tin Plated:-40°C~+105°C
 Pin(Outer Sleeve):Brass,Tin Plated Over Nickel
 Clip(Contact 6 Finger):Beryllium Copper
 Gold Plated Over Nickel
 Insulator(Housing):PPS(UL94V-0),Black
 RoHS Compliant

4UCON 元化興業股份有限公司
 4UCON TECHNOLOGY INC.

DRAWING No.		APPROVED BY		UNLESS OTHERWISE SPECIFIED TOLERANCES ARE X ±0.50 XX ±0.30 XXX ±0.20 .XXX ±0.10 ANG. ±5°
07822		MEI		
		CHECKED BY		
		HZF		
		DRAWING BY		
		CYP		
SCALE	NONE	REV.	A0	UNIT
				mm

NO.	REV.	REVISIONS	CHK	DATE
△ A0		NEW RELEASE	HZF	10/14/2015