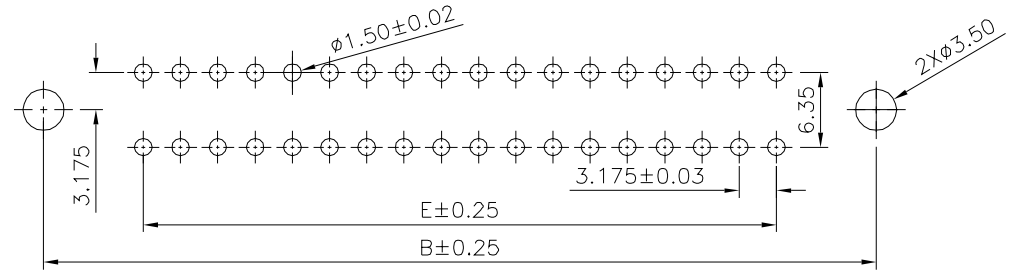
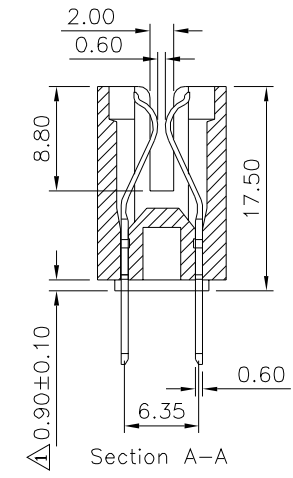
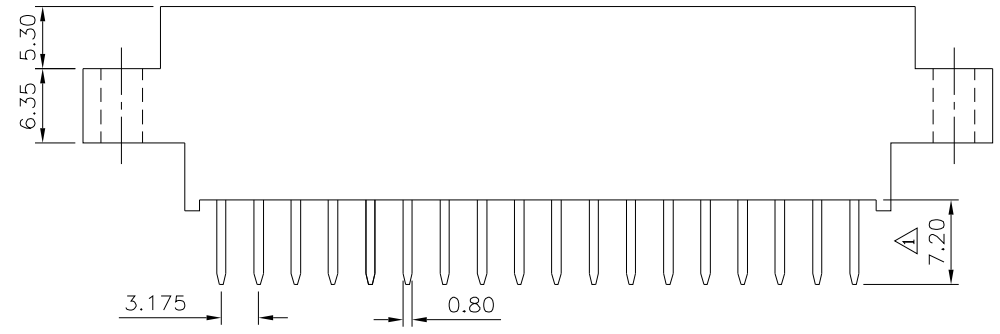
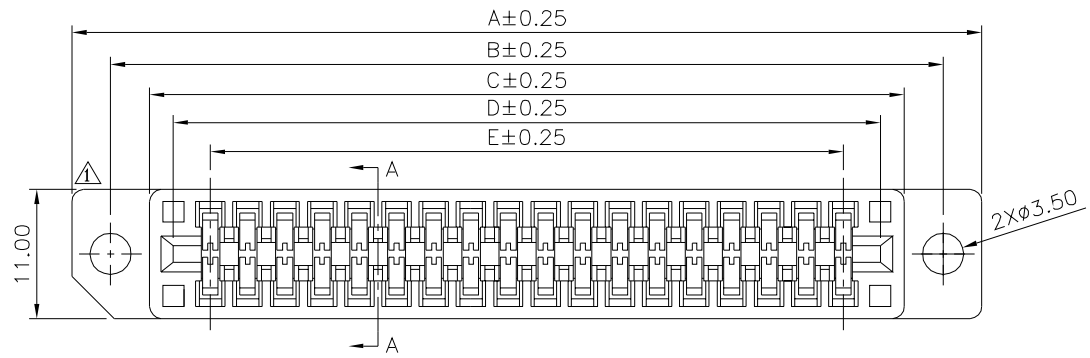


△△ SPECIFICATION

Current Rating:3 Amperes
 Voltage Rating:800V AC 1 Minute
 Contact Resistance: 20 Milliohms Max.
 Insulation Resistance:5000 Megaohms Min.
 Operating Temperature:-55°C~+105°C
 Insertion Force:412 Grams Max. Per Pair
 Withdrawal Force:32 Grams Min. Per Pair
 △ Insulator:PBT+G.F.(UL94V-0),Black
 Contact:Phosphor Bronze,Gold Flash On Contact
 Area,Tin Plated On Solder Tails,Over Nickel
 RoHS Compliant



△ Recommended P.C.B. Layout



△ Pin	A	B	C	D	E
30	68.08	61.47	54.52	50.81	44.45
36	77.60	70.99	64.04	60.33	53.97
40	83.95	77.34	70.39	66.68	60.32
44	90.30	83.69	76.74	73.03	66.67
56	109.35	102.74	95.79	92.08	85.72
60	115.70	109.09	102.14	98.43	92.07
72	134.75	128.14	121.19	117.48	111.12
80	147.45	140.84	133.89	130.18	123.82
86	156.97	150.36	143.41	139.71	133.35
100	179.20	172.59	165.64	161.93	155.57

4U CON 元化興業股份有限公司
 4U CON TECHNOLOGY INC.

DRAWING No.		APPROVED BY		UNLESS OTHERWISE SPECIFIED TOLERANCES ARE △ X. ±0.50 .X ±0.38 .XX ±0.25
07913		MEI		
		CHECKED BY	HZF	
SCALE		DRAWING BY		UNIT
NONE	REV.	SONG		mm
	A3			

NO.	REV.	REVISIONS	CHK	DATE
3	A3	Modify Data	HZF	03/05/2014
2	A2	Modify Data	HZF	07/31/2012
1	A1	Modify Data	HZF	09/01/2009
0	A0	NEW RELEASE	HZF	