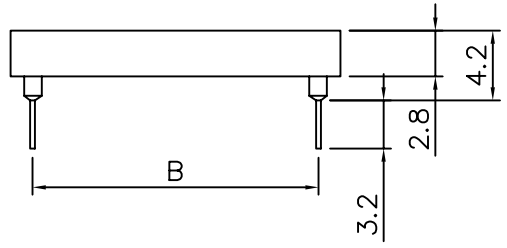
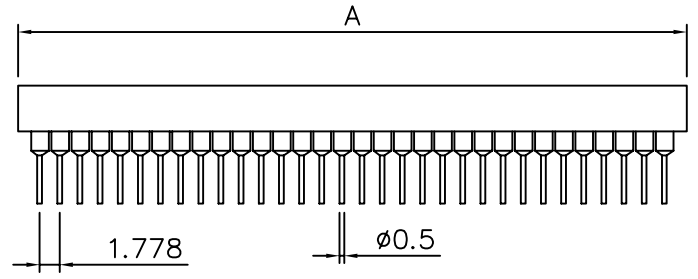
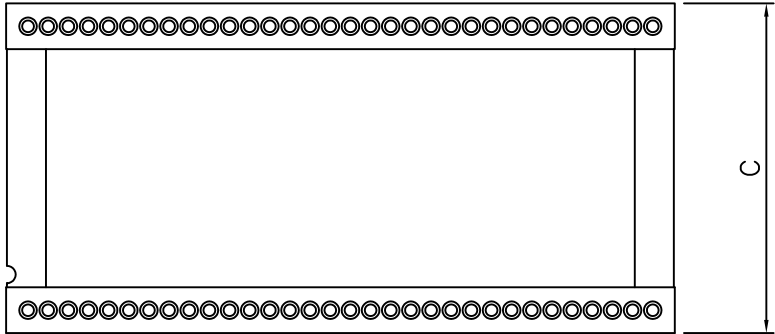


**SPECIFICATIONS**

Voltage Rated : 100V RMS/150W DC  
 Contact Resistance:10 Milliohms Max.  
 Insulation Resistance:1000 Megohms Min.  
 Dielectric Strength :700 VRMS Min  
 Insertion Standard Force: Average 0.7N  
 Operation Temperature:-55°c ~125°c  
 Extraction Standard Test:Average 0.25N  
 Resist to Soldering Heat:Max. 120~130°C, 5 Sec.  
 Current Rating: 1A  
 Operating Humidity Range: Annual mean 75%  
 Insulator Resistance: 5000 Mege Ohm at 500 VDC  
 Insulator : PBT UL 94V-0  
 Contact :Stamped Beryllium Copper (QQ-C-500)Plated 0.75um\*  
 Gold Over2.3um Nickel Over 0.25um Copper  
 Sleeve: Brass



Space	Circuits	DIM A	DIM B	DIM C
03	16	14.60	7.62	10.16
	28	25.20	10.16	12.70
	30	27.00	10.16	12.70
	32	28.80	10.16	12.70
04	48	43.10	10.16	12.70
	20	18.30	15.24	17.78
	24	21.55	15.24	17.78
	28	25.20	15.24	17.78
06	40	35.90	15.24	17.78
	42	37.70	15.24	17.78
	48	43.10	15.24	17.78
	52	46.60	15.24	17.78
	56	50.00	15.24	17.78
	64	57.20	19.05	21.59

**4UCON** 元化興業股份有限公司  
 4UCON TECHNOLOGY INC.

DRAWING No.  
 09790

APPROVED BY MEI  
 CHECKED BY LHC  
 DRAWING BY HZF

UNLESS OTHERWISE SPECIFIED TOLERANCES ARE  
 .X ±0.20  
 .XX ±0.15  
 .XXX

SCALE NONE REV. A UNIT mm

AREA REVISIONS CHK DATE