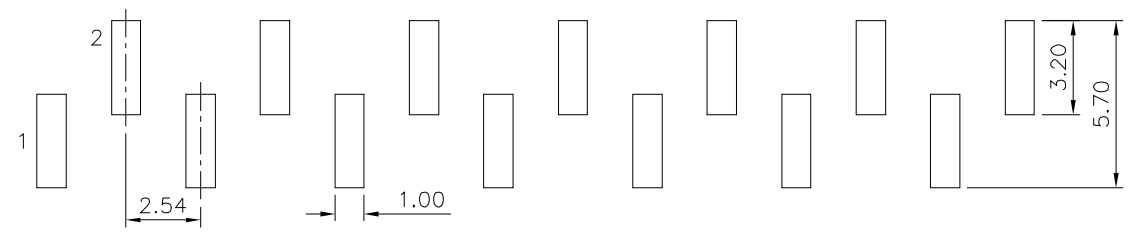
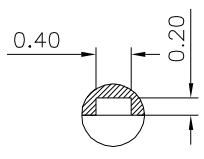
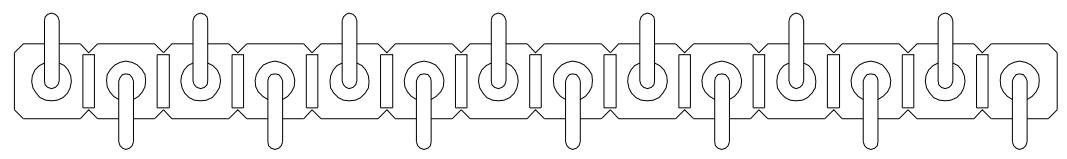
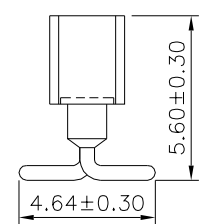
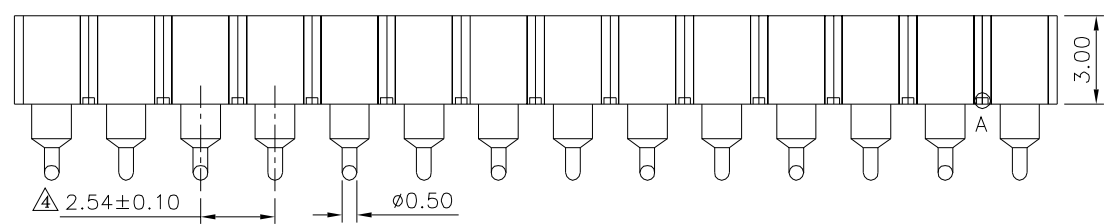
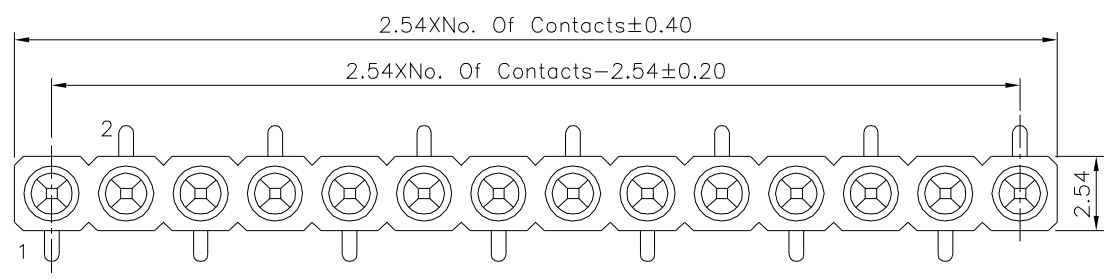


SPECIFICATION

Current Rating:3A/Contact Max.
 Contact Resistance:4 Milliohms/Contact Max.
 Insulation Resistance:1000 Megaohms Min. At 100V
 Average Insertion Force With Steel Pin Of
 ø0.43mm:<250g
 Average Withdrawal Force With Steel Pin Of
 ø0.43mm:>25g Min.
 Operation Temperature:-40°C~+105°C
 Pin(Outer Sleeve):Brass,Tin Plated Over Nickel
 Clip(Contact 4 Finger):Beryllium Copper
 Gold Flash Over Nickel
 Insulator(Housing):PPS(UL94V-0),Black
 RoHS Compliant



Recommended P.C.B. Layout



Detail:A

4UCON 元化興業股份有限公司
 4UCON TECHNOLOGY INC.

DRAWING No. \triangle		APPROVED BY		UNLESS OTHERWISE SPECIFIED TOLERANCES ARE X. ±0.50 XX ±0.38 XXX ±0.25 .XXX ±0.15 ANG. ±5°
10211		MEI		
		CHECKED BY HZF		
		DRAWING BY LSM		
SCALE	NONE	REV.	BO	UNIT mm

NO.	REV.	REVISIONS	CHK	DATE
\triangle	BO	Modify Data	HZF	05/29/2024
\triangle	BO	NEW RELEASE	HZF	05/29/2024