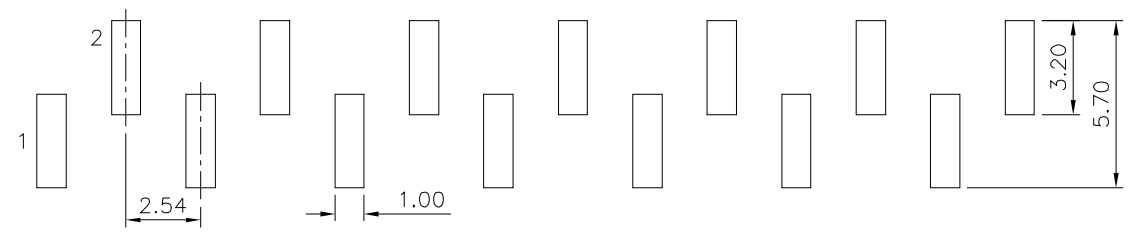
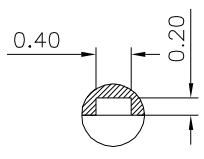
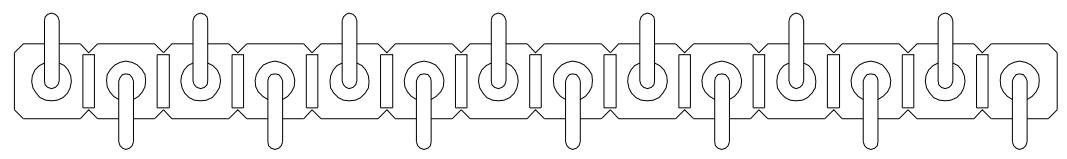
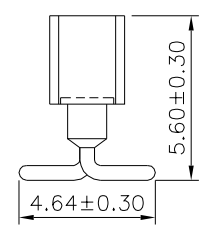
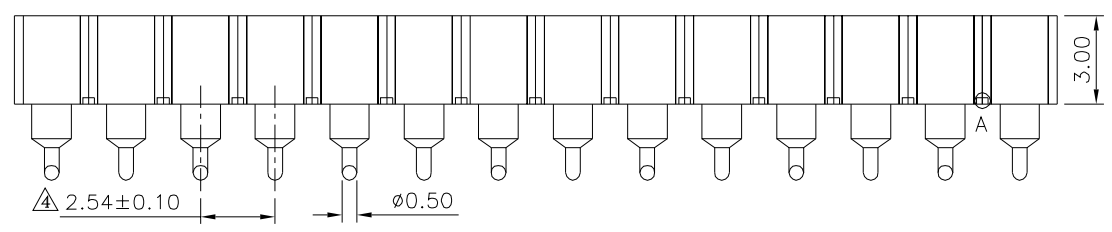
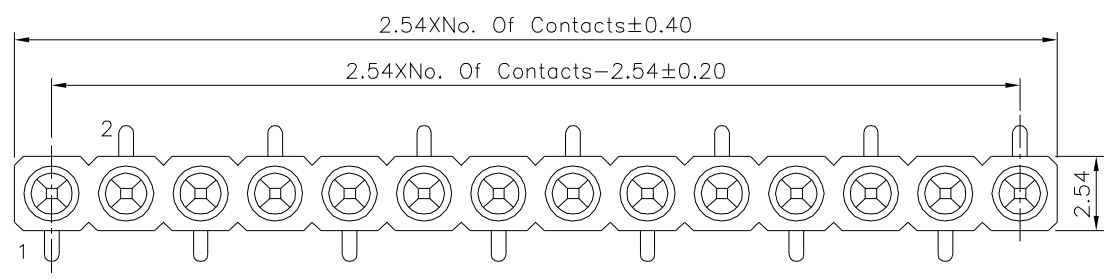


**SPECIFICATION**

Current Rating:3A/Contact Max.  
 Contact Resistance:4 Milliohms/Contact Max.  
 Insulation Resistance:1000 Megaohms Min. At 100V  
 Average Insertion Force With Steel Pin Of  
 ø0.43mm:<250g  
 Average Withdrawal Force With Steel Pin Of  
 ø0.43mm:>25g Min.  
 Operation Temperature:-40°C~+105°C  
 Pin(Outer Sleeve):Brass,Tin Plated Over Nickel  
 Clip(Contact 4 Finger):Beryllium Copper  
 Gold Flash Over Nickel  
 Insulator(Housing):PPS(UL94V-0),Black  
 RoHS Compliant



Recommended P.C.B. Layout



Detail:A

**4UCON** 元化興業股份有限公司  
 4UCON TECHNOLOGY INC.

DRAWING No. $\triangle$		APPROVED BY		UNLESS OTHERWISE SPECIFIED TOLERANCES ARE X. ±0.50 XX ±0.38 XXX ±0.25 .XXX ±0.15 ANG. ±5°
10228		MEI		
		CHECKED BY		
		HZF		
		DRAWING BY		
		LSM		
SCALE	NONE	REV.	BO	UNIT
				mm

NO.	REV.	REVISIONS	CHK	DATE
$\triangle$	BO	Modify Data	HZF	05/29/2024
$\triangle$	BO	NEW RELEASE	HZF	05/29/2024