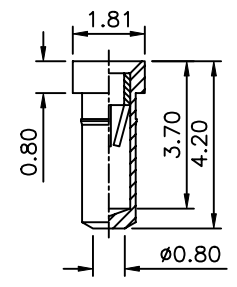
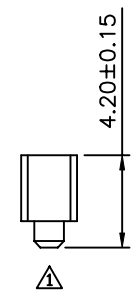
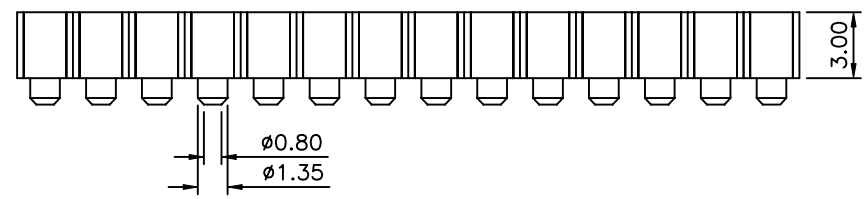
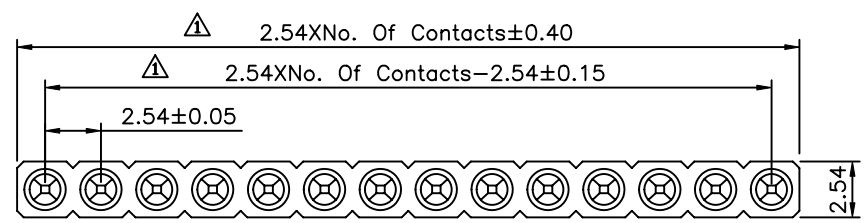


△ Recommended P.C.B. Layout



Pin Expatiate

△ SPECIFICATION

Current Rating: 3Amps/Contact Max.
 Contact Resistance: 4 Milliohms/Contact Max.
 Insulation Resistance: 1000 Megaohms Min. At 100V
 Operation Voltage: 60V AC/DC
 Average Insertion Force With Steel Pin Of $\phi 0.43\text{mm}$: <math>< 250\text{g}</math>
 Average Withdrawal Force With Steel Pin Of $\phi 0.43\text{mm}$: >90g Min.
 Mechanical Life Cycle: 200 Min.
 Operation Temperature: Gold Plated: $-55^{\circ}\text{C} \sim +105^{\circ}\text{C}$
 Tin Plated: $-40^{\circ}\text{C} \sim +105^{\circ}\text{C}$
 Soldering Temperature: $+260^{\circ}\text{C}$, 10s Max.
 Pin (Outer Sleeve): Brass, Machined CuZn38Pb2
 Tin Plated Over Nickel
 Clip (Contact 4 Finger): Beryllium Copper, Heat Treated
 Gold Plated Over Nickel
 Insulator (Housing): PPS UL94V-0, Black
 RoHS Compliant

4UCON 元化興業股份有限公司
 4UCON TECHNOLOGY INC.

DRAWING No.		APPROVED BY		UNLESS OTHERWISE SPECIFIED TOLERANCES ARE X. ± 0.35 .X ± 0.20 .XX ± 0.15 .XXX ± 0.05 ANG. $\pm 5^{\circ}$
10318		MEI		
		CHECKED BY HZF		
		DRAWING BY QQJ		
SCALE	NONE	REV.	A1	UNIT mm

NO.	REV.	REVISIONS	CHK	DATE
△ A1		Modify Data	HZF	01/14/2010
△ A0		NEW RELEASE	HZF	06/20/2009