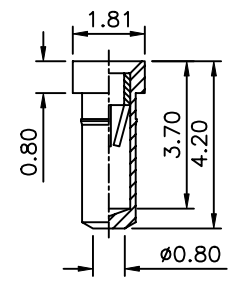
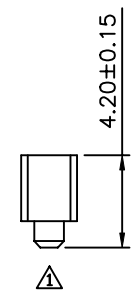
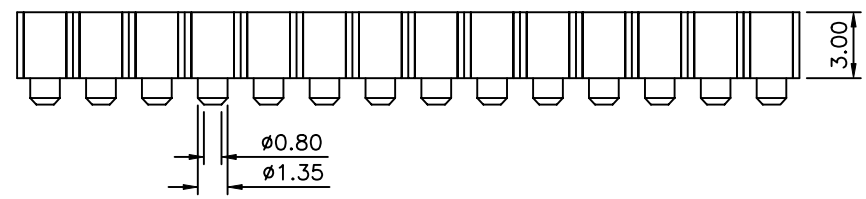
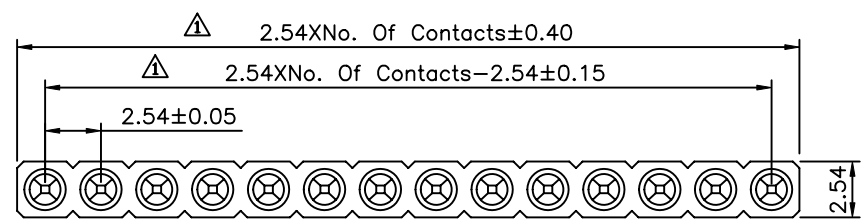


△ Recommended P.C.B. Layout

△ SPECIFICATION

Current Rating: 3Amps/Contact Max.  
 Contact Resistance: 4 Milliohms/Contact Max.  
 Insulation Resistance: 1000 Megaohms Min. At 100V  
 Operation Voltage: 60V AC/DC  
 Average Insertion Force With Steel Pin Of  $\phi 0.43\text{mm}$  : <250g  
 Average Withdrawal Force With Steel Pin Of  $\phi 0.43\text{mm}$  : >90g Min.  
 Mechanical Life Cycle: 200 Min.  
 Operation Temperature: Gold Plated:  $-55^{\circ}\text{C} \sim +105^{\circ}\text{C}$   
 Tin Plated:  $-40^{\circ}\text{C} \sim +105^{\circ}\text{C}$   
 Soldering Temperature:  $+260^{\circ}\text{C}$ , 10s Max.  
 Pin (Outer Sleeve): Brass, Machined CuZn38Pb2  
 Tin Plated Over Nickel  
 Clip (Contact 4 Finger): Beryllium Copper, Heat Treated  
 Gold Plated Over Nickel  
 Insulator (Housing): PPS UL94V-0, Black  
 RoHS Compliant



Pin Expatiate

**4UCON** 元化興業股份有限公司  
 4UCON TECHNOLOGY INC.

DRAWING No.		APPROVED BY		UNLESS OTHERWISE SPECIFIED TOLERANCES ARE X. ±0.35 .X ±0.20 .XX ±0.15 .XXX ±0.05 ANG. ±5°
10327		MEI		
		CHECKED BY HZF		
		DRAWING BY QQJ		
SCALE	NONE	REV.	A1	UNIT mm

NO.	REV.	REVISIONS	CHK	DATE
△ A1		Modify Data	HZF	01/14/2010
△ A0		NEW RELEASE	HZF	06/20/2009