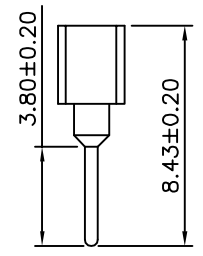
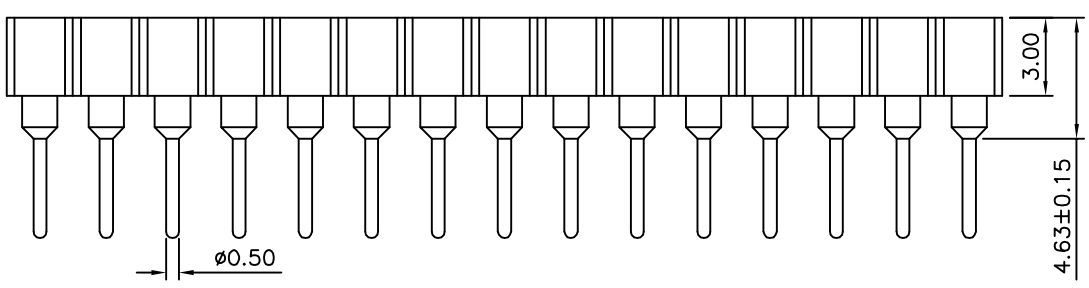
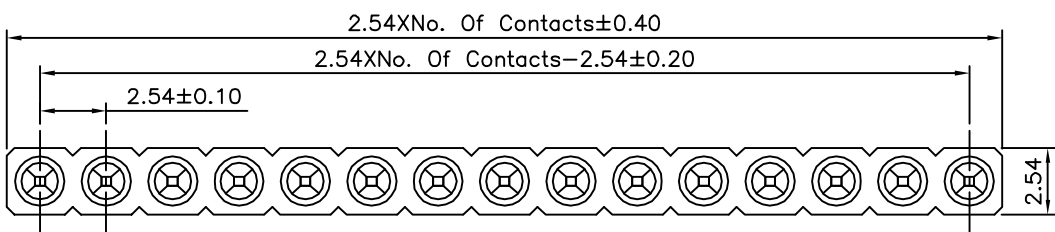


Recommended P.C.B. Layout



SPECIFICATION

Current Rating:3 Amps/Contact Max.
 Contact Resistance:4 Milliohms Max./Contact
 Insulation Resistance:1000 Megaohms Min. At 100V
 Operation Voltage:60V AC/DC
 Average Insertion Force With Steel Pin Of
 $\phi 0.43\text{mm}$:<250g
 Average Withdrawal Force With Steel Pin Of
 $\phi 0.43\text{mm}$:>50g Min.
 Mechanical Life Cycle:200 Min.
 Operation Temperatures:Gold Plated:-55°C~+105°C
 Tin Plated:-40°C~+105°C
 Soldering Temperature:+260°C,10s Max.
 Pin(Outer Sleeve):Brass,Tin Plated Over Nickel
 Clip(Contact 4 Finger):Beryllium Copper
 Gold Flash Over Nickel
 Insulator:PPS(UL94V-0),Black
 RoHS Compliant

4UCON 元化興業股份有限公司
 4UCON TECHNOLOGY INC.

DRAWING No.		APPROVED BY	
11133		EMILY	
		CHECKED BY	
		HZF	
		DRAWING BY	
		YBL	
SCALE	NONE	REV.	A0

UNLESS OTHERWISE SPECIFIED TOLERANCES ARE
 X. ± 0.50
 .X ± 0.30
 .XX ± 0.20
 .XXX ± 0.10
 ANG. $\pm 5^\circ$

NO.	REV.	REVISIONS	CHK	DATE
△ A0		NEW RELEASE	HZF	07/24/2013