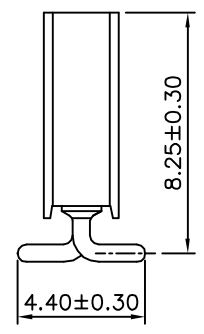
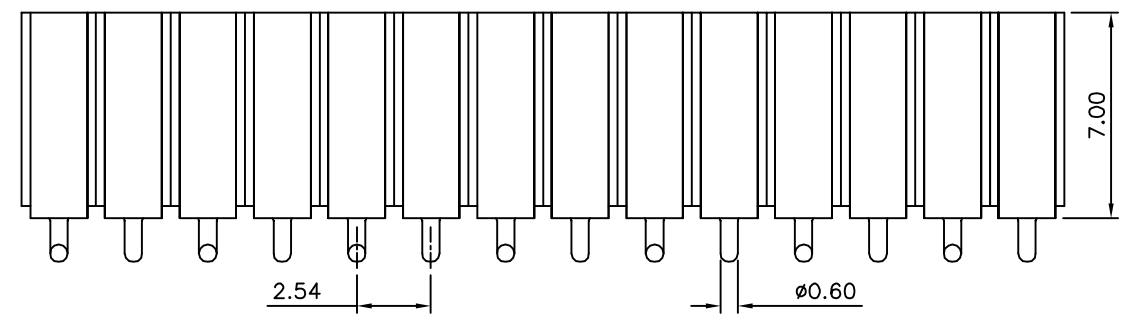
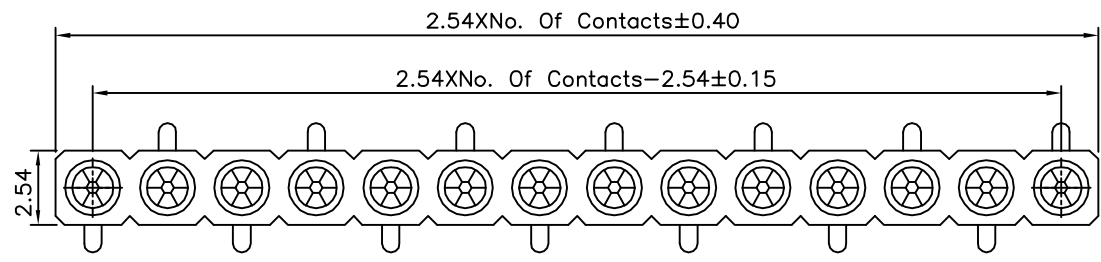


Recommended P.C.B. Layout

SPECIFICATION

Current Rating:3 Amps/Contact Max.
 Contact Resistance:4 Milliohms Max./Contact
 Insulation Resistance:1000 Megaohms Min. At 100V
 Operation Voltage:60V AC/DC
 Average Insertion Force With Steel Pin Of
 ø0.66mm:<140g
 Average Withdrawal Force With Steel Pin Of
 ø0.66mm:>25g Min.
 Mechanical Life Cycle:200 Min.
 Operation Temperatures:Gold Plated:-55°C~+105°C
 Tin Plated:-40°C~+105°C
 Soldering Temperature:+260°C,10s Max.
 Pin(Outer Sleeve):Brass,Tin Plated Over Nickel
 Clip(Contact 6 Finger):Beryllium Copper
 Gold Flash Over Nickel
 Insulator:PPS(UL94V-0),Black
 RoHS Compliant



4UCON 元化興業股份有限公司
 4UCON TECHNOLOGY INC.

DRAWING No.		APPROVED BY		UNLESS OTHERWISE SPECIFIED TOLERANCES ARE X. ±0.50 .X ±0.30 .XX ±0.20 .XXX ±0.10 ANG. ±5°
11136		EMILY		
		CHECKED BY		
		HZF		
		DRAWING BY		
		YBL		
SCALE	NONE	REV.	A0	UNIT
				mm

NO.	REV.	REVISIONS	CHK	DATE
△ A0		NEW RELEASE	HZF	07/17/2013