

SPECIFICATIONS

Barrier Material: Thermoplastic(UL 94V-0),Black

Terminals: Tin Plated Brass

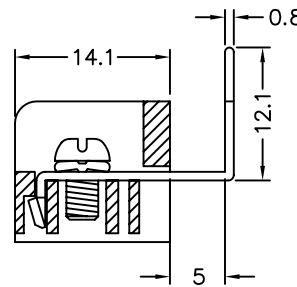
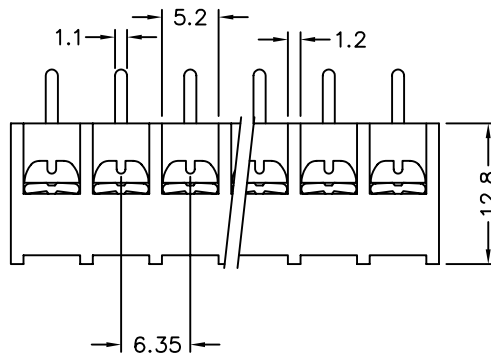
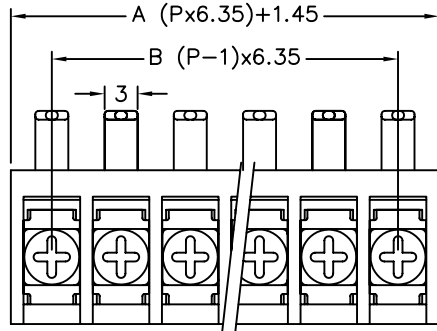
Screws: Nickel Plated Steel

Wire Range AWG: 18-22 STR

Rating: 13 Amp,250VAC

Insulation Withstand Voltage: AC 2000V

Insulation Resistance: 500 Megohms Min. at DC 500V



Pole.	A	B	Pole.	A	B
2	14.15	6.35	18	115.75	107.95
3	20.5	12.7	19	122.1	144.3
4	26.85	19.05	20	128.45	120.65
5	33.2	25.4	21	134.8	127
6	39.55	31.75	22	141.15	133.35
7	45.9	38.1	23	147.5	139.7
8	52.25	44.45	24	153.85	146.05
9	58.6	50.8	25	160.2	152.4
10	64.95	57.15	26	166.55	158.75
11	71.3	63.5	27	172.9	165.1
12	77.65	69.85	28	179.25	171.5
13	83.7	76.2	29	185.6	177.8
14	90.35	82.55	30	191.95	184.2
15	96.7	88.9	31	198.3	190.5
16	103.05	95.25	32	204.7	196.9
17	109.4	101.6			

4UCON 元化興業股份有限公司
4UCON TECHNOLOGY INC.

DRAWING No.
13599

APPROVED BY MEI
CHECKED BY BECKY
DRAWING BY HZF

UNLESS OTHERWISE SPECIFIED TOLERANCES ARE
.X ±0.2
.XX ±0.2
ANG.

SCALE NONE

REV. A1

UNIT mm

NO.

REV.

REVISIONS

CHK

DATE

1 A1 Modify Data BECKY 2004/11/25

0 A0 NEW RELEASE MEI