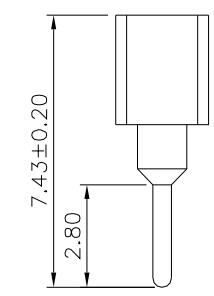
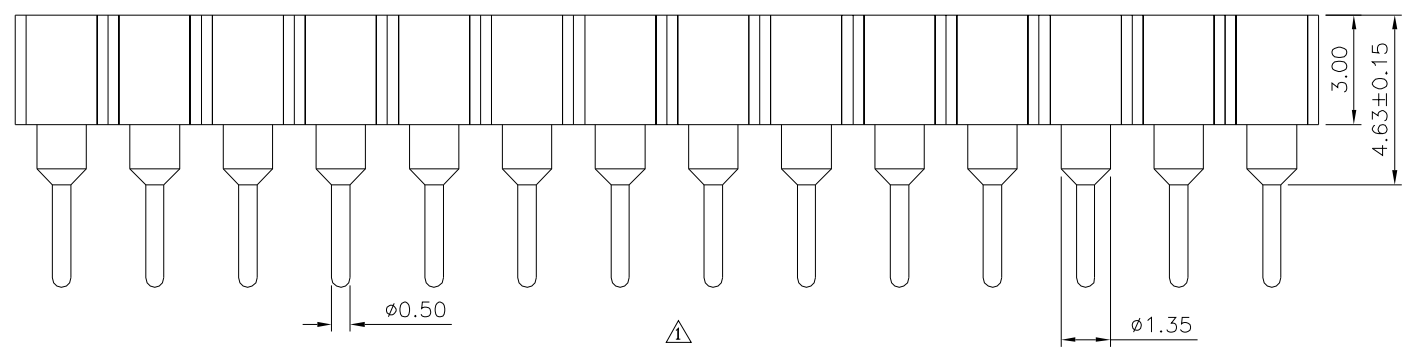
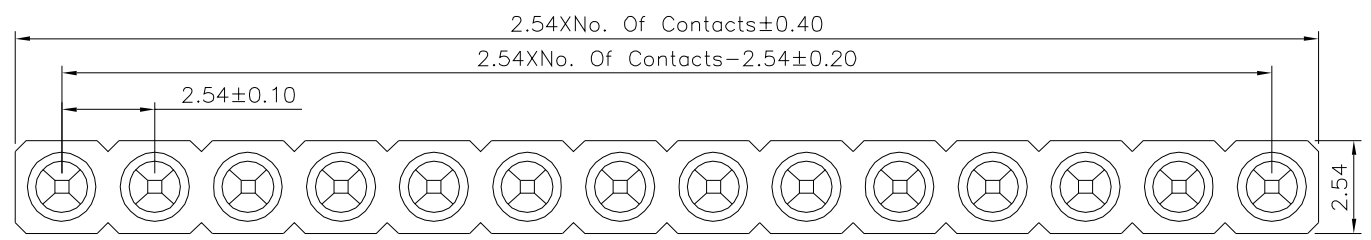
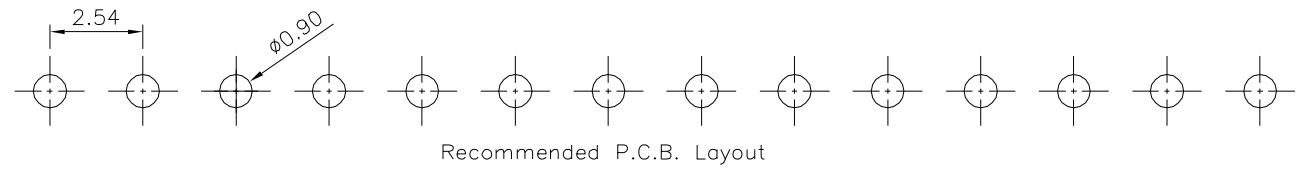


△ SPECIFICATION

Current Rating:3 Amps/Contact Max.  
 Contact Resistance:4 Milliohms/Contact Max.  
 Insulation Resistance:1000 Megaohms Min. At 100V  
 Operating Voltage:60V AC/DC  
 Average Insertion Force With Steel Pin Of  
 ø0.43mm:<250g  
 Average Withdrawal Force With Steel Pin Of  
 ø0.43mm:>90g Min.  
 Operating Temperature:Gold Plated:-55°C~+105°C  
 Tin Plated:-40°C~+105°C  
 Pin(Outer Sleeve):Brass,Tin Plated Over Nickel  
 Clip(Contact 4 Finger):Beryllium Copper,Gold Plated  
 Over Nickel  
 Insulator(Housing):PPS(UL94V-0),Black  
 RoHS Compliant



**4UCON** 元化興業股份有限公司  
 4UCON TECHNOLOGY INC.

DRAWING No. △△  
 16645

APPROVED BY MEI  
 CHECKED BY HZF  
 DRAWING BY CYP  
 REV. B1

UNLESS OTHERWISE SPECIFIED TOLERANCES ARE  
 X ±0.50  
 XX ±0.30  
 XXX ±0.20  
 .XXX ±0.10  
 ANG. ±5°  
 UNIT mm

NO.	REV.	REVISIONS	CHK	DATE
△	B1	Modify Data	HZF	11/26/2019
△	B0	Modify Data	HZF	07/07/2016
△	B0	NEW RELEASE	HZF	07/07/2016