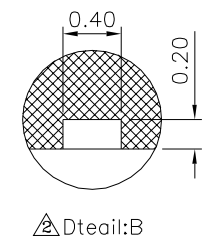
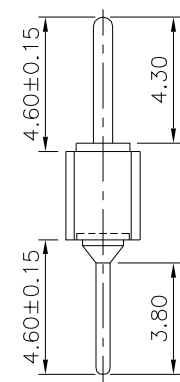
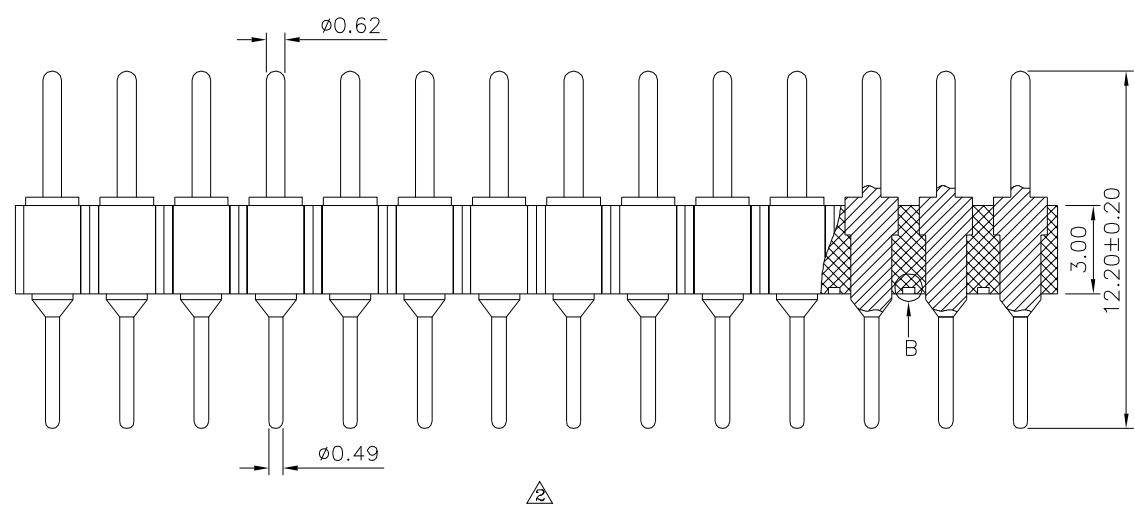
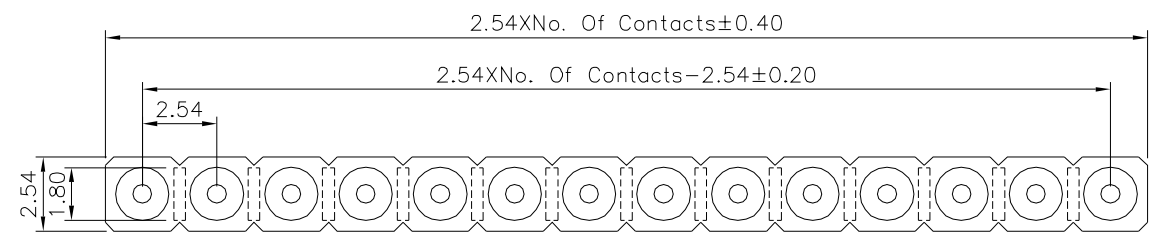
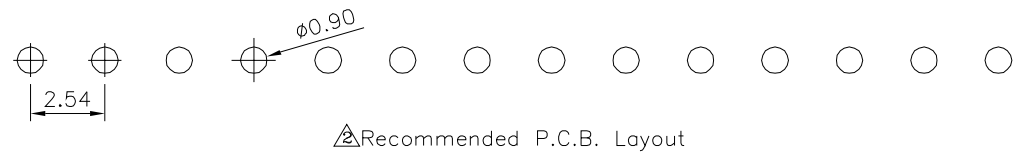


**△△ SPECIFICATION**

Current Rating: 3 Amps/Contact Max.  
 Contact Resistance: 4 Milliohms Max./Contact  
 Insulation Resistance: 1000 Megaohms Min. At 100V  
 Operating Voltage: 60V AC/DC  
 Operation Temperature: -40°C~+105°C  
 Pin(Outer Sleeve): Brass, Tin Plated Over All, Over Nickel  
 Insulator: PPS(UL94V-0), Black  
 RoHS Compliant



**4U CON** 元化興業股份有限公司  
 4U CON TECHNOLOGY INC.

DRAWING No.		APPROVED BY	
16703		MEI	
		CHECKED BY	
		HZF	
DRAWING BY		CYP	
SCALE	NONE	REV.	A3

UNLESS OTHERWISE SPECIFIED TOLERANCES ARE  
 X. ±0.50  
 .X ±0.30  
 .XX ±0.20  
 .XXX ±0.10  
 ANG. ±5°  
 UNIT mm

NO.	REV.	REVISIONS	CHK	DATE
3	A3	Modify Data	HZF	12/14/2017
2	A2	Modify Data	HZF	03/17/2011
1	A1	Modify Data	BECKY	05/05/2006
0	A0	NEW RELEASE	BECKY	07/20/2005