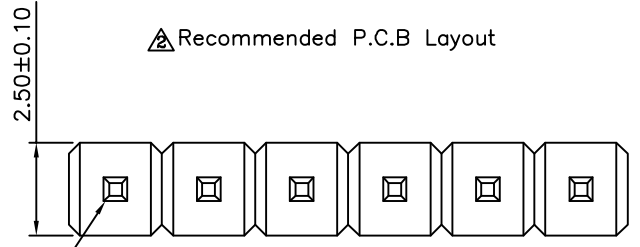
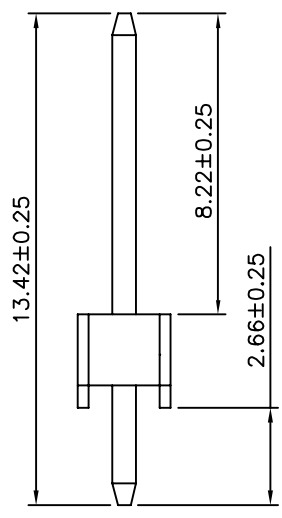
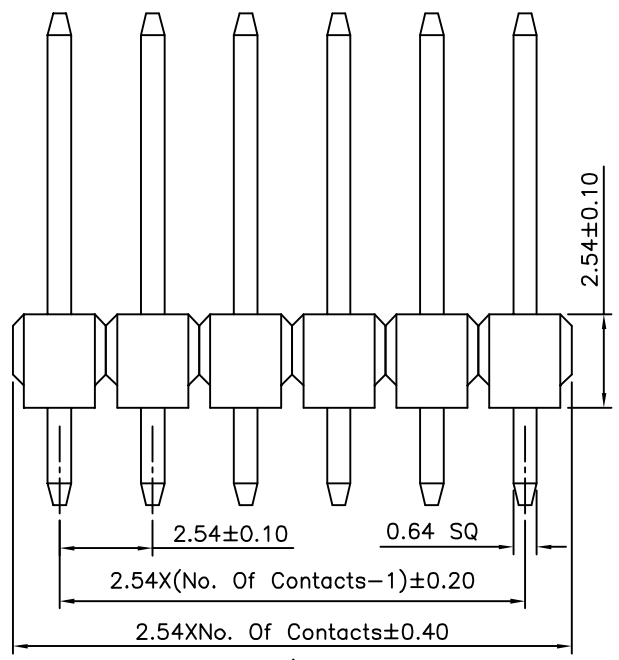


Recommended P.C.B Layout



**SPECIFICATION**

Current:3A  
 Withstanding Voltage:1000V AC RMS  
 Contact Resistance:20 Milliohms Max.  
 Insulation Resistance:1000 Megaohms Min.  
 Operation Temperature:-55°C~+105°C  
 Insulator:PBT+30%G.F.(UL94V-0),Black  
 Contact:Brass,Gold Flash Over Nickel  
 No. Of Contacts:2~40 Contacts  
 RoHS Compliant



**4UCON** 元化興業股份有限公司  
 4UCON TECHNOLOGY INC.

DRAWING No.		APPROVED BY		UNLESS OTHERWISE SPECIFIED TOLERANCES ARE .X ±0.38 .XX ±0.25 ANG. ±5°
17714		EMILY		
		CHECKED BY		
		HZF		
		DRAWING BY		
		CYP		
SCALE	NONE	REV.	A3	UNIT mm

NO.	REV.	REVISIONS	CHK	DATE
A3		Modify Data	HZF	08/28/2015
A2		Modify Data	HZF	09/07/2012
A1		Modify Data	HZF	11/13/2008
A0		NEW RELEASE	SHIN	03/14/2006