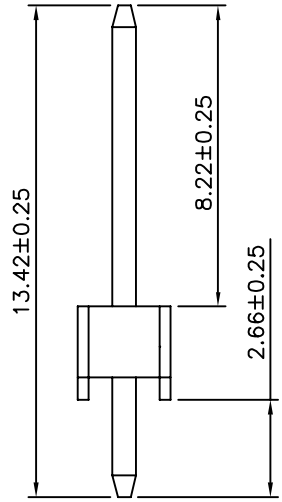
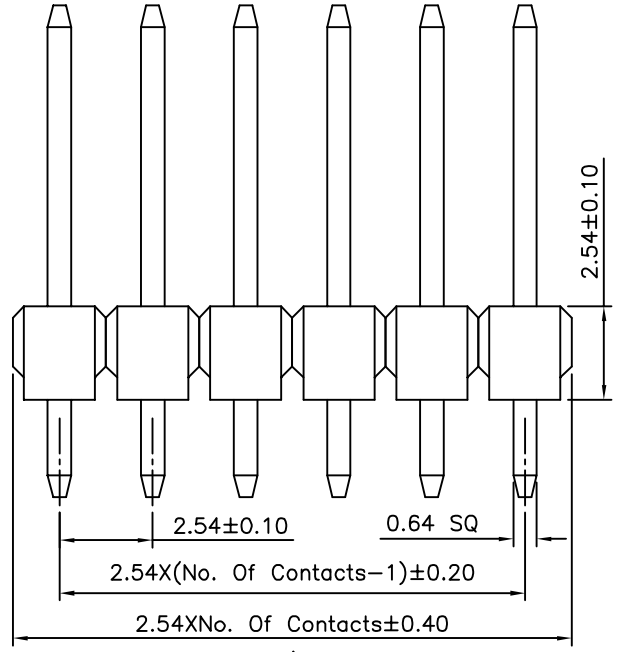
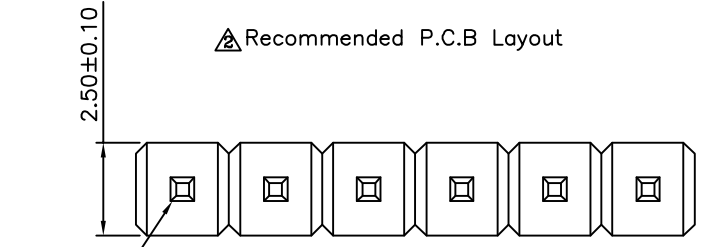


△ Recommended P.C.B Layout



△ SPECIFICATION

Current:3A
Withstanding Voltage:1000V AC RMS
Contact Resistance:20 Milliohms Max.
Insulation Resistance:1000 Megaohms Min.
Operation Temperature:-55°C~+105°C
△ Insulator:PBT+30%G.F.(UL94V-0),Black
Contact:Brass,Gold Flash Over Nickel
No. Of Contacts:2~40 Contacts
RoHS Compliant

4UCON 元化興業股份有限公司
4UCON TECHNOLOGY INC.

DRAWING No.		APPROVED BY		UNLESS OTHERWISE SPECIFIED TOLERANCES ARE △ .X ±0.38 △ .XX ±0.25 ANG. ±5°
17720		EMILY		
		CHECKED BY		
		HZF		
		DRAWING BY		
		CYP		
SCALE	NONE	REV.	A3	UNIT mm

NO.	REV.	REVISIONS	CHK	DATE
△ A3		Modify Data	HZF	08/28/2015
△ A2		Modify Data	HZF	09/07/2012
△ A1		Modify Data	HZF	11/13/2008
△ A0		NEW RELEASE	SHIN	03/14/2006