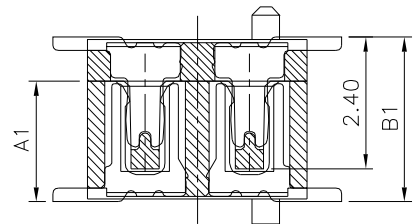
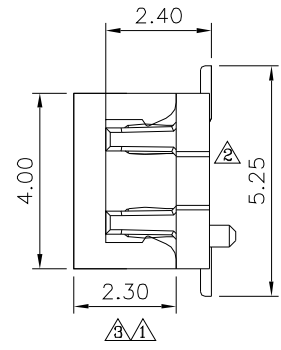
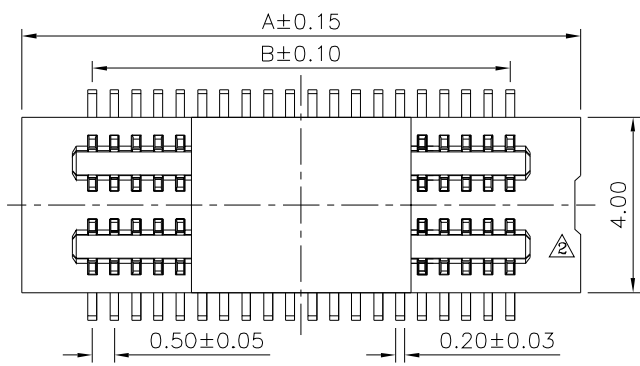
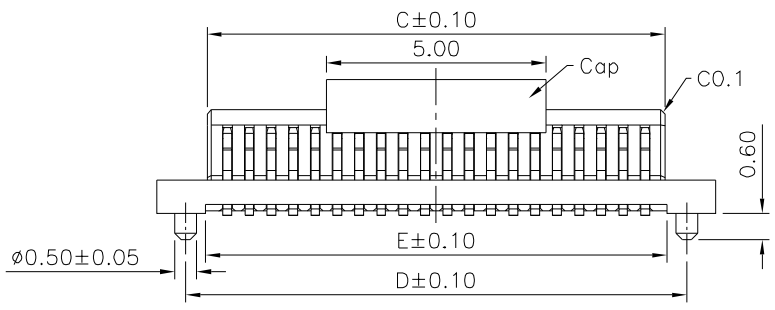


Recommended P.C.B. Layout



Mating Draw (Ref.)



SPECIFICATION

1.General Characteristics:

0.5mm Board To Board Double Slot Type Female XXP
SMT 180° With Post Stacking Height=3.0mm With Cap

2.Material&Finish:

Housing:LCP(UL94V-0),White
Contact:Phosphor Bronze,Gold Plated Over Nickel

3.Electrical Characteristics:

Current Rating:0.5A AC/DC
Voltage Rating:50V AC/DC
Withstanding Voltage:100V AC For One Minute
Contact Resistance:30 Milliohms Max.
Insulation Resistance:100 Megaohms Min. At 100V DC

4.Environmental Characteristics:

Operation Temperature Range:-20°C~+105°C

5.RoHS Compliant

Pin	A	B	C	D	E
10	5.20	2.00	2.92	3.90	3.00
20	7.70	4.50	5.42	6.40	5.50
30	10.20	7.00	7.92	8.90	8.00
40	12.70	9.50	10.42	11.40	10.50
50	15.20	12.00	12.92	13.90	13.00
60	17.70	14.50	15.42	16.40	15.50
70	20.20	17.00	17.92	18.90	18.00
80	22.70	19.50	20.42	21.40	20.50
90	25.20	22.00	22.92	23.90	23.00
100	27.70	24.50	25.42	26.40	25.50
120	35.20	32.00	32.92	33.90	33.00

Part No.(Socket)	Part No.(Plug)	A1	B1
1652	1651	2.20	3.00

4UCON 元化興業股份有限公司
4UCON TECHNOLOGY INC.

DRAWING No.		APPROVED BY		UNLESS OTHERWISE SPECIFIED TOLERANCES ARE .X ±0.2 .XX ±0.15 ANG.
18930		MEI		
		CHECKED BY	HZF	
		DRAWING BY	CYP	
SCALE	NONE	REV.	B3	UNIT mm

NO.	REV.	REVISIONS	CHK	DATE
△3	B3	Modify Data	HZF	09/27/2018
△2	B2	Modify Data	HZF	03/06/2014
△1	B1	Modify Data	HZF	02/26/2014
△0	B0	NEW RELEASE	HZF	08/10/2012