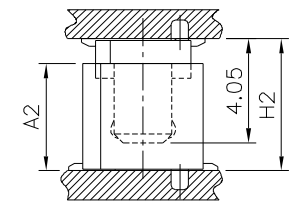
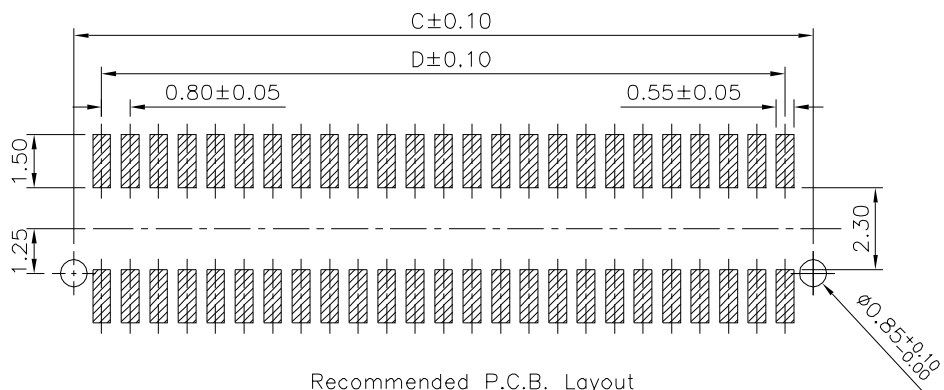
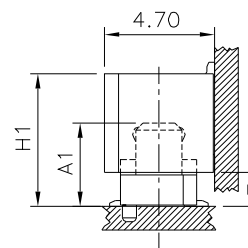
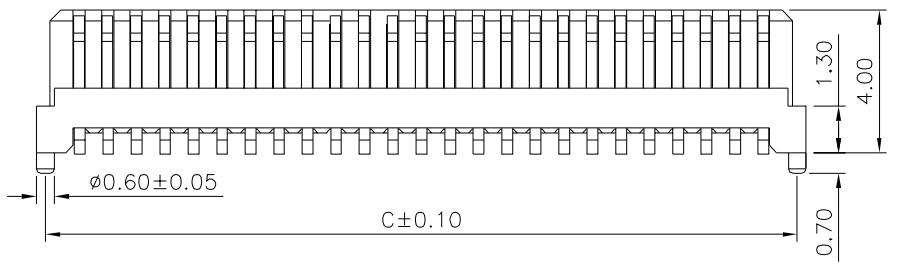
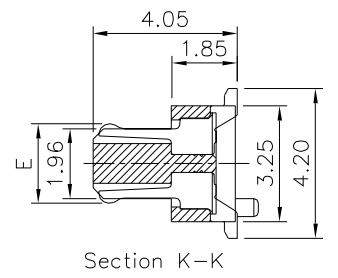
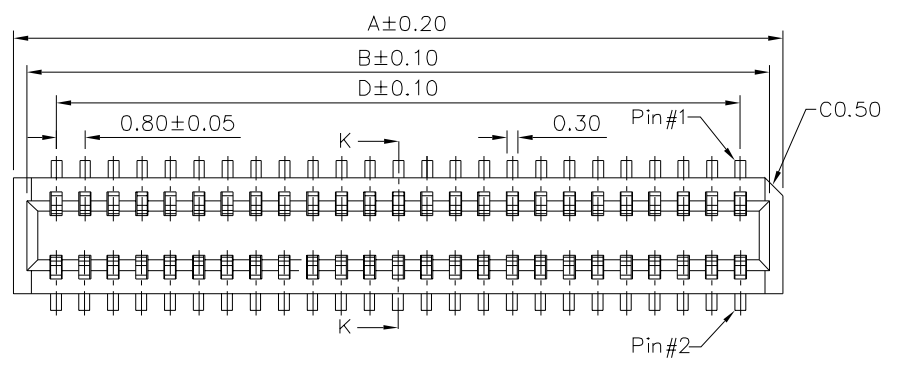


SPECIFICATION

- 1.General Characteristics:**
0.8mm Board To Board Female XXP SMT 180°
With Post Without Fitting Nail Stacking
Height=5.5/6.15/7.0mm
- 2.Material&Finish:**
Insulator:PA46(UL94V-0),Beige
Conact:Phosphor Bronze,Gold Plated Over Nickel
- 3.Electrical Characteristics:**
Current Rating:0.5A AC/DC
Voltage Rating:100V AC/DC
Insulation Resistance:100 Megaohms Min.
Withstanding Voltage:500V(RMS) For One Minute
Contact Resistance:40 Milliohms Max.
- 4.Environmental Characteristics:**
Operation Temperature Range:-40°C~105°C
- 5.RoHS Compliant**



| Part No.(Plug) | Part No.(Socket) | A2 | H2 |
|----------------|------------------|------|------|
| NPEXXXP42R-H | NPEXXXS14R-H | 4.15 | 5.50 |
| NPEXXXP56R-H | NPEXXXS14R-H | 5.65 | 7.00 |



| Part No.(Plug) | Part No.(Socket) | A1 | H1 | E |
|----------------|------------------|------|------|------|
| NPEXXXP47SW-H | NPEXXXS14R-H | 4.05 | 6.15 | 1.45 |

| Pin | A | B | C | D | E |
|-----|-------|-------|-------|-------|------|
| 10 | 5.60 | 4.85 | 5.00 | 3.20 | 2.40 |
| 14 | 7.20 | 6.45 | 6.60 | 4.80 | |
| 16 | 8.00 | 7.25 | 7.40 | 5.60 | |
| 18 | 8.80 | 8.05 | 8.20 | 6.40 | |
| 20 | 9.60 | 8.85 | 9.00 | 7.20 | |
| 30 | 13.60 | 12.85 | 13.00 | 11.20 | 2.30 |
| 40 | 17.60 | 16.85 | 17.00 | 15.20 | |
| 50 | 21.60 | 20.85 | 21.00 | 19.20 | |
| 60 | 25.60 | 24.85 | 25.00 | 23.20 | |
| 80 | 33.60 | 32.85 | 33.00 | 31.20 | |
| 100 | 41.60 | 40.85 | 41.00 | 39.20 | |

4UCON 元化興業股份有限公司
4UCON TECHNOLOGY INC.

| | | | | | |
|-------------|--|-------------|--|-------------------------------------------|--|
| DRAWING No. | | APPROVED BY | | UNLESS OTHERWISE SPECIFIED TOLERANCES ARE | |
| 19145 | | MEI | | | |
| | | HZF | | | |
| SCALE | | DRAWING BY | | .X ±0.20 | |
| NONE | | CYP | | .XX ±0.15 | |
| REV. | | BO | | UNIT | |
| | | | | mm | |

| | | | | | |
|-----|------|----|-------------|-----|------------|
| NO. | REV. | BO | NEW RELEASE | HZF | 05/02/2018 |
| | | | REVISIONS | CHK | DATE |