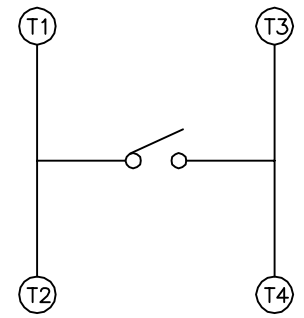
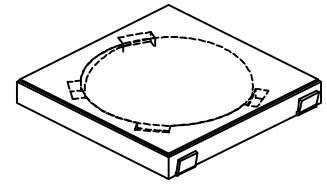
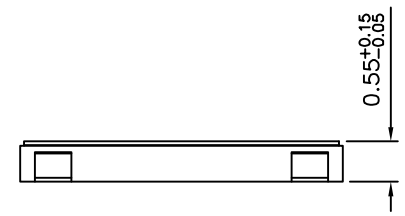


Recommended P.C.B. Layout

△ SPECIFICATION
 Current Range:50mA,12V DC
 Dielectric Withstand Voltage:300V AC(50Hz Or 60Hz)
 For 1 Minute
 Contact Resistance:100 Milliohms Max.
 Insulation Resistance:100 Megaohms Min.
 Operation Temperature Range:-20°C~+70°C
 Operating Life:Cycle Of Operation:200,000 Cycles
 Min.~160gf
 RoHS Compliant



Circuit Diagram

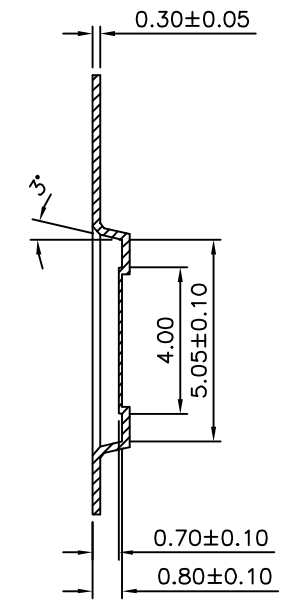
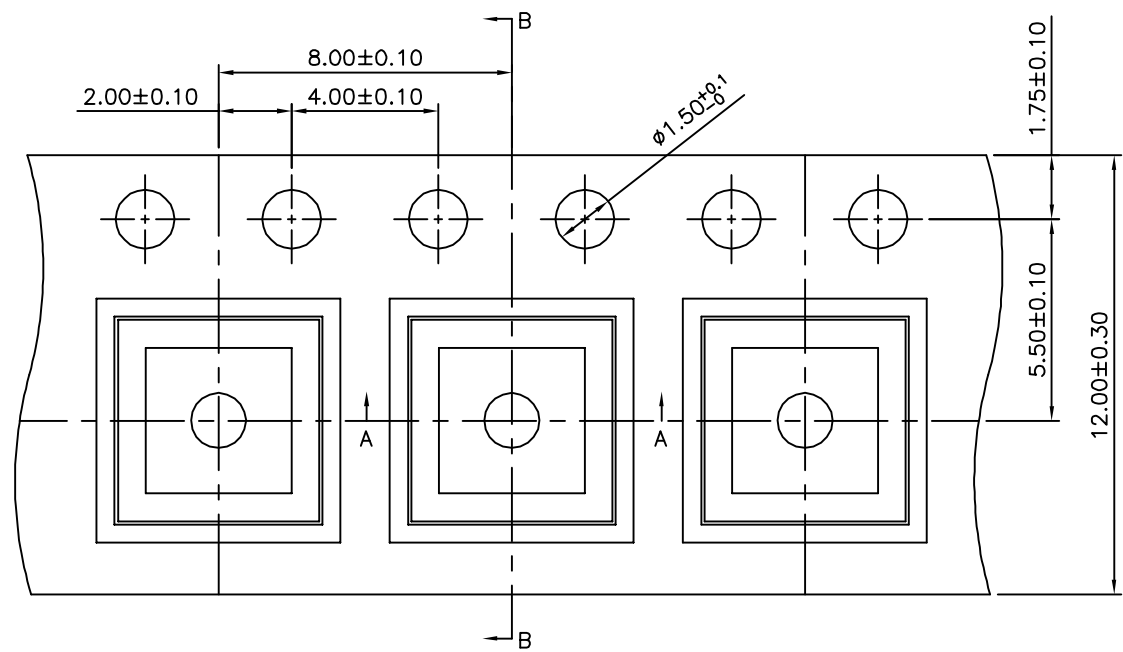
Item	Desc.	Q'ty	Materials	Remank
1	Adhesive Tape	1	Kapton	None
2	Terminal	1	Phosphor Bronze	Silver Plated
3	Contact	1	Stainless Steel	Silver Plated
4	Base	1	LCP	Black

4UCON 元化興業股份有限公司
 4UCON TECHNOLOGY INC.

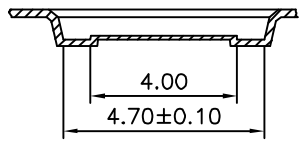
DRAWING No.		APPROVED BY		UNLESS OTHERWISE SPECIFIED TOLERANCES ARE .X ±0.2 .XX ±0.2 ANG. UNIT mm
19182		EMILY		
		CHECKED BY		
		HZF		
		DRAWING BY		NO. REV.
		SONG		
SCALE	NONE	REV.	A1	REVISIONS

△ A1	Modify Data	HZF	08/06/2011
△ A0	NEW RELEASE	HZF	05/14/2009
NO. REV.	REVISIONS	CHK	DATE

SPECIFICATION
 Δ Q'ty:8000 PCS/Reel
 Pitch Tolerance Over Any 10 Pitch:±0.20
 RoHS Compliant



Section B-B



Section A-A

4UCON 元化興業股份有限公司
 4UCON TECHNOLOGY INC.

DRAWING No.		APPROVED BY		UNLESS OTHERWISE SPECIFIED TOLERANCES ARE .X ±0.1 .XX ±0.1 ANG.
19182		EMILY		
		CHECKED BY HZF		
SCALE		DRAWING BY		UNIT mm
NONE		SONG		
REV.	A1			

NO.	REV.	REVISIONS	CHK	DATE
Δ A1		Modify Data	HZF	08/06/2011
Δ A0		NEW RELEASE	HZF	05/14/2009