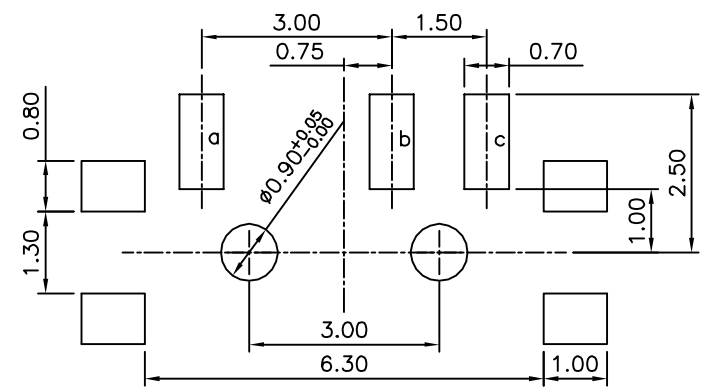
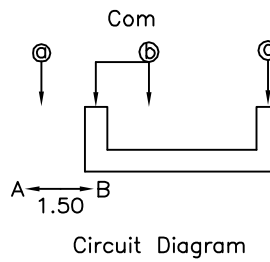
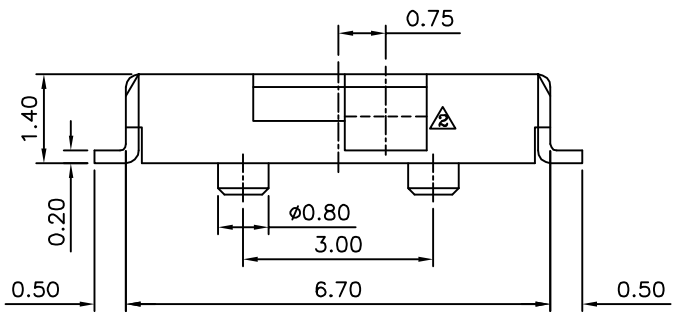
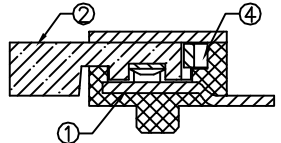
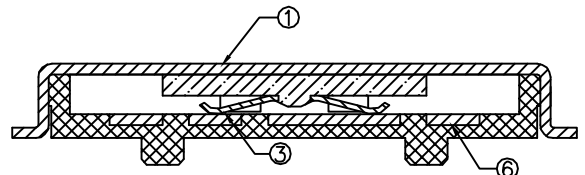


△ SPECIFICATION
 Current Rating: Non-Switching: 300mA, 4V DC
 Switching: 25mA, 24V DC
 Withstand Voltage: 100V AC (50Hz Or 60Hz)
 For 1 Minute
 Contact Resistance: 70 Milliohms Max.
 Insulation Resistance: 100 Megaohms Min.
 At 100V DC For 1 Minute ±5 Sec.
 Operating Temperature: -20°C ~ +70°C
 Storage Temperature: -40°C ~ +85°C
 RoHS Compliant



Recommended P.C.B. Layout



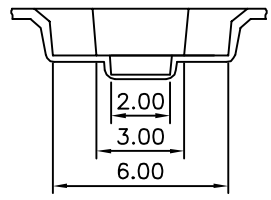
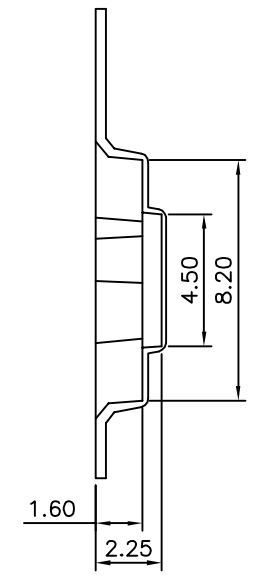
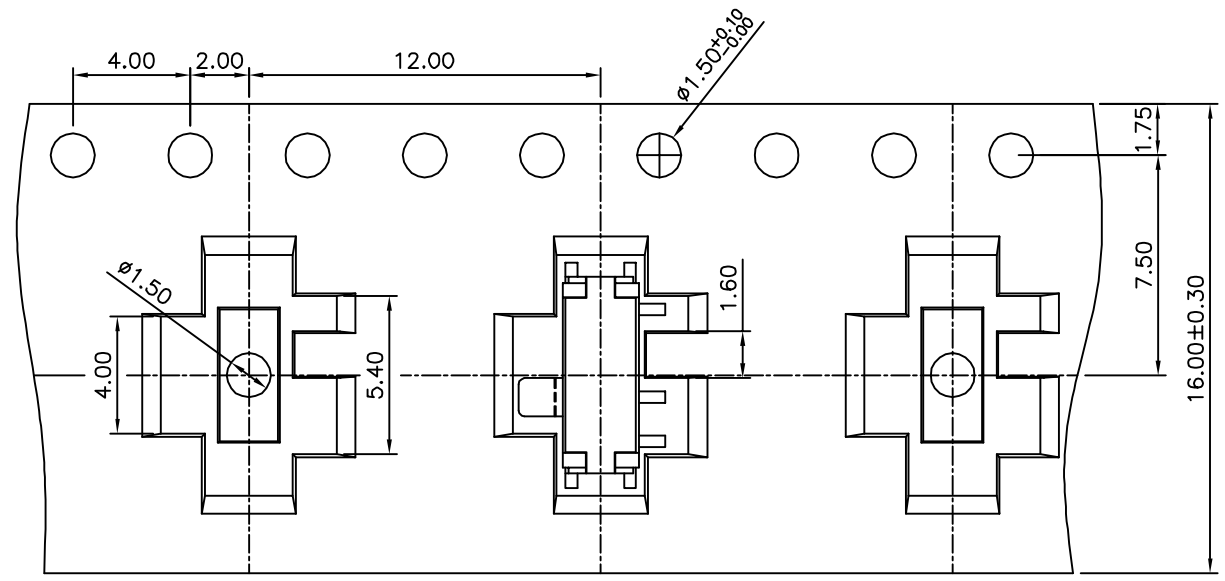
△ No.	Descriptions	Q'ty	Material	Remark
①	Cover	1	Nickel Silver	
②	Stem	1	PA46, UL94V-0	Black
③	Contact	1	Beryllium Copper	Gold Plated Over Nickel
④	Spring Plate	1	Stainless Steel	
⑤	Base	1	LCP	Black
⑥	Terminal	1	Brass	Silver Plated Over Nickel

4UCON 元化興業股份有限公司
 4UCON TECHNOLOGY INC.

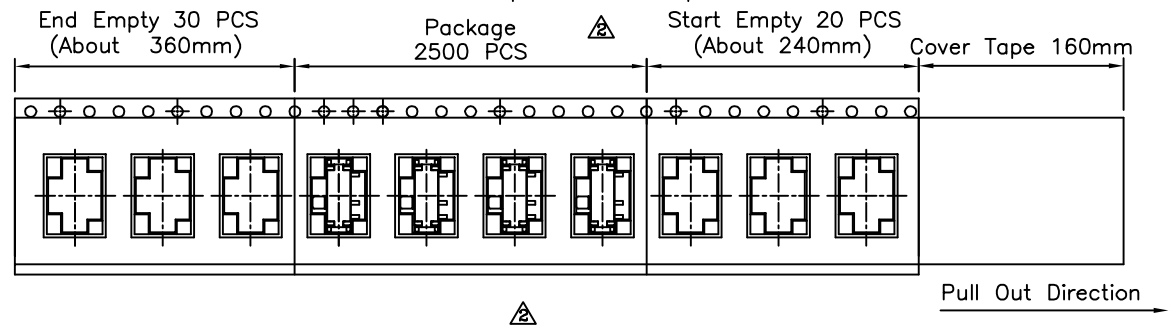
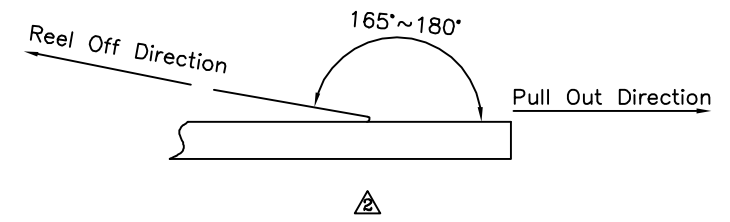
DRAWING No.		APPROVED BY		UNLESS OTHERWISE SPECIFIED TOLERANCES ARE .X ±0.20 .XX ±0.20 ANG.
19192		EMILY		
		CHECKED BY		
		HZF		
		DRAWING BY		
		HAO		
SCALE	NONE	REV.	A2	UNIT mm

NO.	REV.	REVISIONS	CHK	DATE
△ A2		Modify Data	HZF	12/22/2014
△ A1		Modify Data	HZF	04/27/2010
△ A0		NEW RELEASE	HZF	05/04/2008

SPECIFICATION
 Pitch Tolerance Over Any 10 Pitch ± 0.20
 Material: PS, Black, Thickness: 0.35 ± 0.05 mm
 Q'ty: 2500 PCS/Reel
 RoHS Compliant



Peeling Off Force Of Top Tape: 10g~130g
 Peeling Direction As Shown In Following Fig



4UCON 元化興業股份有限公司
 4UCON TECHNOLOGY INC.

DRAWING No.		APPROVED BY		UNLESS OTHERWISE SPECIFIED TOLERANCES ARE .X ± 0.10 .XX ± 0.10 ANG.
19192		EMILY		
		CHECKED BY HZF		
		DRAWING BY HAO		UNIT mm
SCALE	NONE	REV.	A2	

NO.	REV.	REVISIONS	CHK	DATE
△A2		Modify Data	HZF	12/22/2014
△A1		Modify Data	HZF	04/27/2010
△A0		NEW RELEASE	HZF	05/04/2008