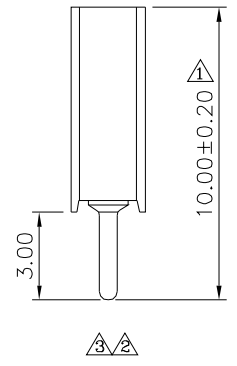
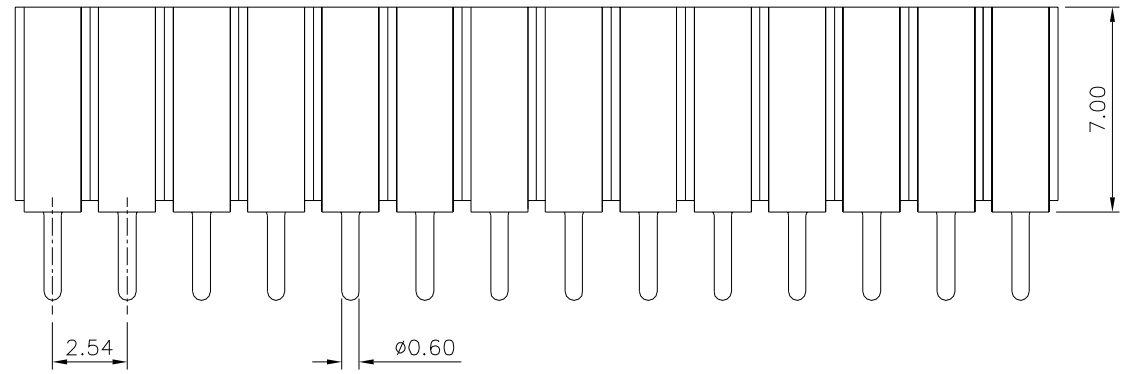
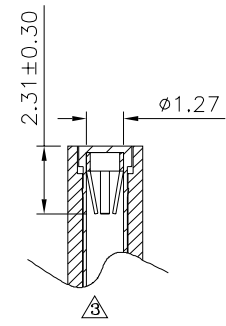
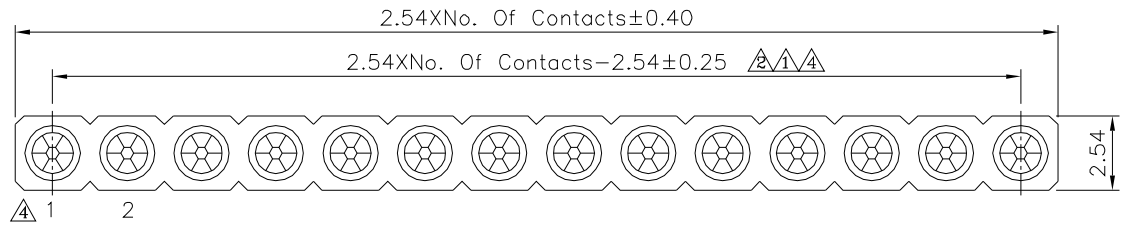


Recommended P.C.B. Layout
 (PCB Board Tolerance ±0.05)

SPECIFICATION

Current Rating: 3 Amps/Contact Max.
 Contact Resistance: 20 Milliohms Max./Contact
 Insulation Resistance: 1000 Megaohms Min.
 Operation Temperature: -40°C ~ +105°C
 Average Insertion Force With Steel Pin Of $\phi 0.66\text{mm}$: <140g
 Average Withdrawal Force With Steel Pin Of $\phi 0.66\text{mm}$: >25g Min.
 Pin (Outer Sleeve): Brass, Tin Plated Over Nickel
 Clip (Contact 6 Finger): Beryllium Copper, Gold Flash Over Nickel
 Insulator (Housing): PPS (UL94V-0), Black
 RoHS Compliant



4UCON 元化興業股份有限公司
 4UCON TECHNOLOGY INC.

DRAWING No. 19455

APPROVED BY MEI
 CHECKED BY HZF
 DRAWING BY CYP

UNLESS OTHERWISE SPECIFIED TOLERANCES ARE
 X: ±0.50
 .X: ±0.30
 .XX: ±0.20
 .XXX: ±0.10
 ANG. ±5°

A4	Modify Data	HZF	11/30/2022
A3	Modify Data	HZF	11/23/2019
A2	Modify Data	HZF	03/12/2013
A1	Modify Data	HZF	02/17/2011
A0	NEW RELEASE	HZF	08/26/2008
NO. REV.	REVISIONS	CHK	DATE

SCALE NONE

REV. A4

UNIT mm