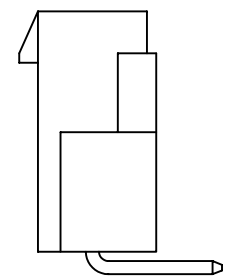
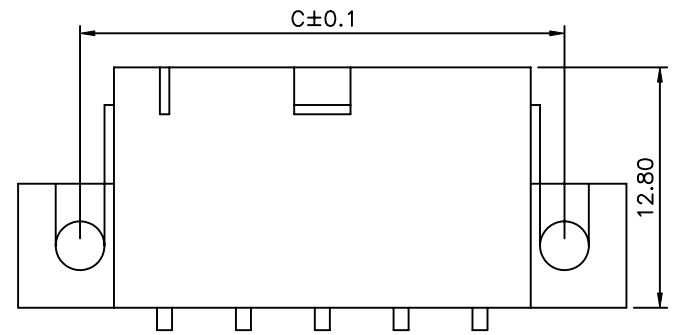
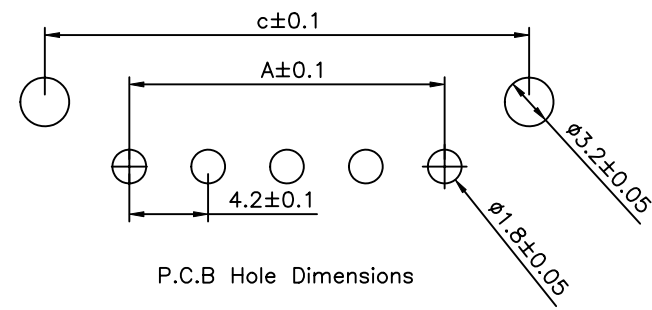
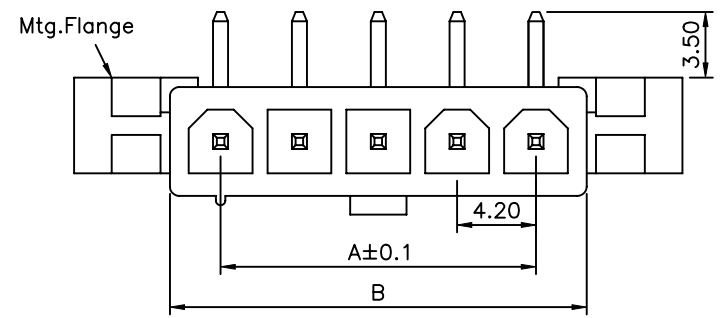


SPECIFICATION

Current Rating:(Used With #16 AWG)

Circuits	2~3	4~6	7~10	11~12
Ampere	9	8	7	6

Voltage Rating:600V(R.M.S)
 Contact Resistance:10 Milliohms Max.
 Dielectric Withstanding Voltage:1500V AC/Minute
 Ambient Temperature Range:-40°C~105°C
 Material:UL 94V-2 Nylon
 1.14mm Square Pin
 Recommended PCB Thickness:1.78mm Max.
 RoHS Compliant



Circuits	A	B	C
2	4.2	9.6	13.2
3	8.4	13.8	17.4
4	12.6	18.0	21.6
5	16.8	22.2	25.8
6	21.0	26.4	30.0
7	25.2	30.6	34.2
8	29.4	34.8	38.4
9	33.6	39.0	42.6
10	37.8	43.2	46.8
11	42.0	47.4	51.0
12	46.2	51.6	55.2

4UCON 元化興業股份有限公司
 4UCON TECHNOLOGY INC.

DRAWING No.		APPROVED BY		UNLESS OTHERWISE SPECIFIED TOLERANCES ARE .X ±0.40 .XX ±0.25 .XX ±0.10 .ANG
19502		MEI		
		CHECKED BY		
		HZF		
		DRAWING BY		UNIT mm
		LXX		
SCALE	NONE	REV.	A0	

NO.	REV.	DESCRIPTION	CHK	DATE
△ A0		NEW RELEASE	HZF	08/23/2007
		REVISIONS		