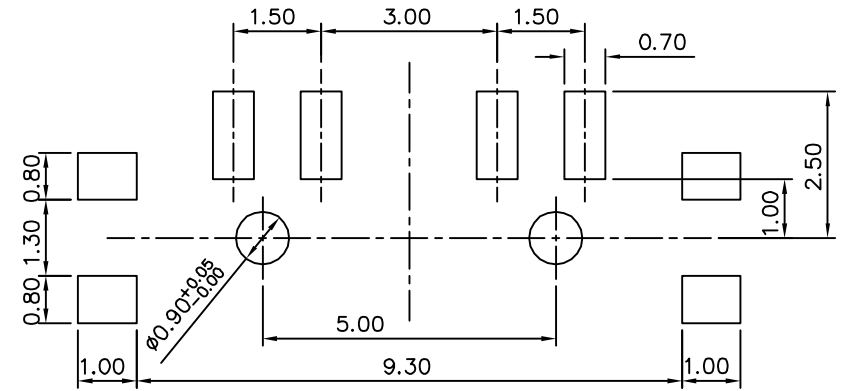
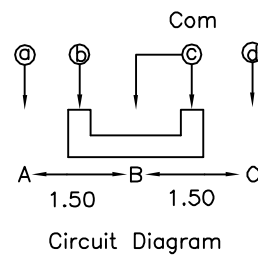
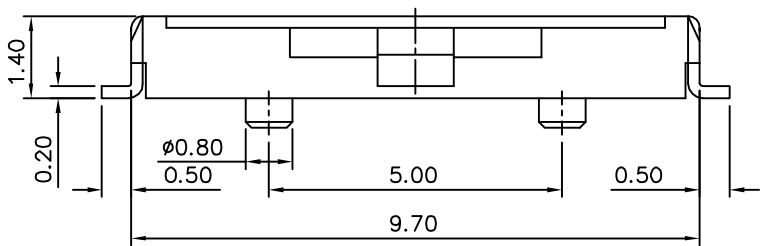
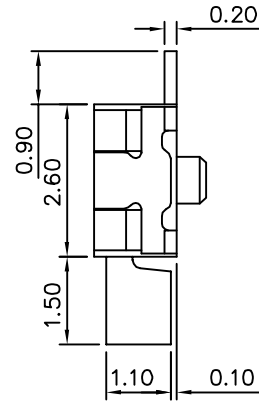
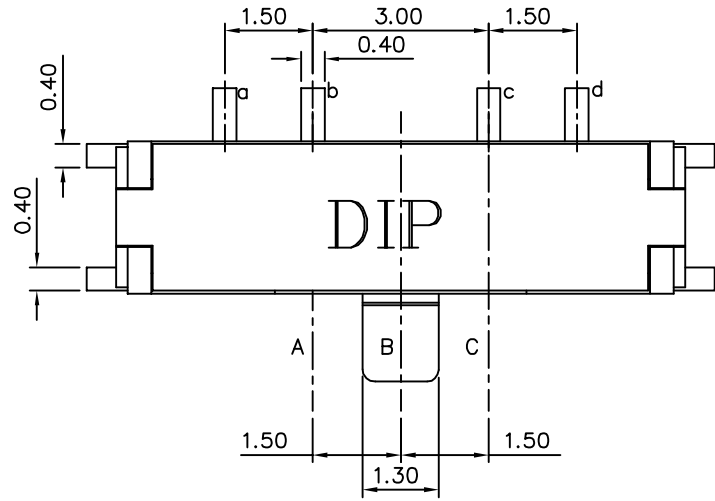
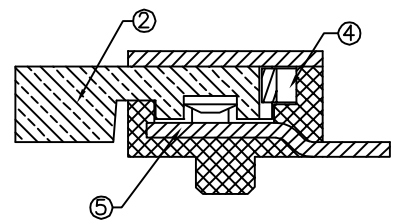
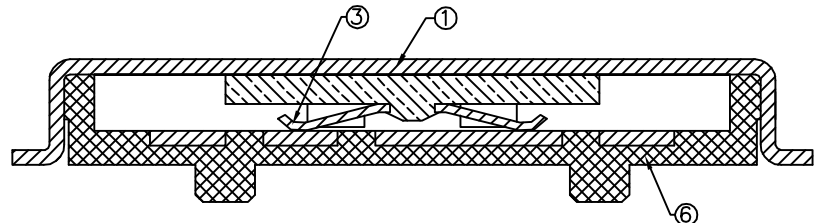


SPECIFICATION

Current Rating:
 Non-Switching:300mA,4V DC
 Switching:25mA,24V DC
 Withstand Voltage:100V AC(50Hz Or 60Hz)
 For 1 Minute
 Contact Resistance:70 Milliohms Max.
 Insulation Resistance:100 Megaohms Min.
 At 100V DC
 Operation Temperature Range:-20°C~+70°C
 RoHS Compliant



Recommended P.C.B. Layout



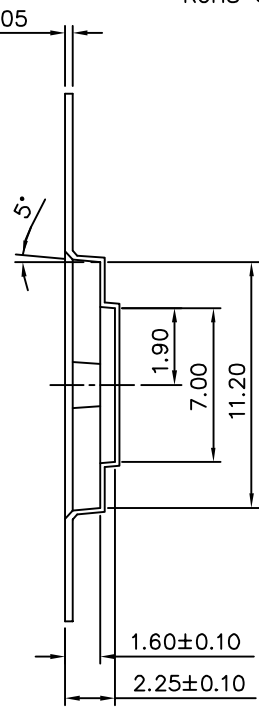
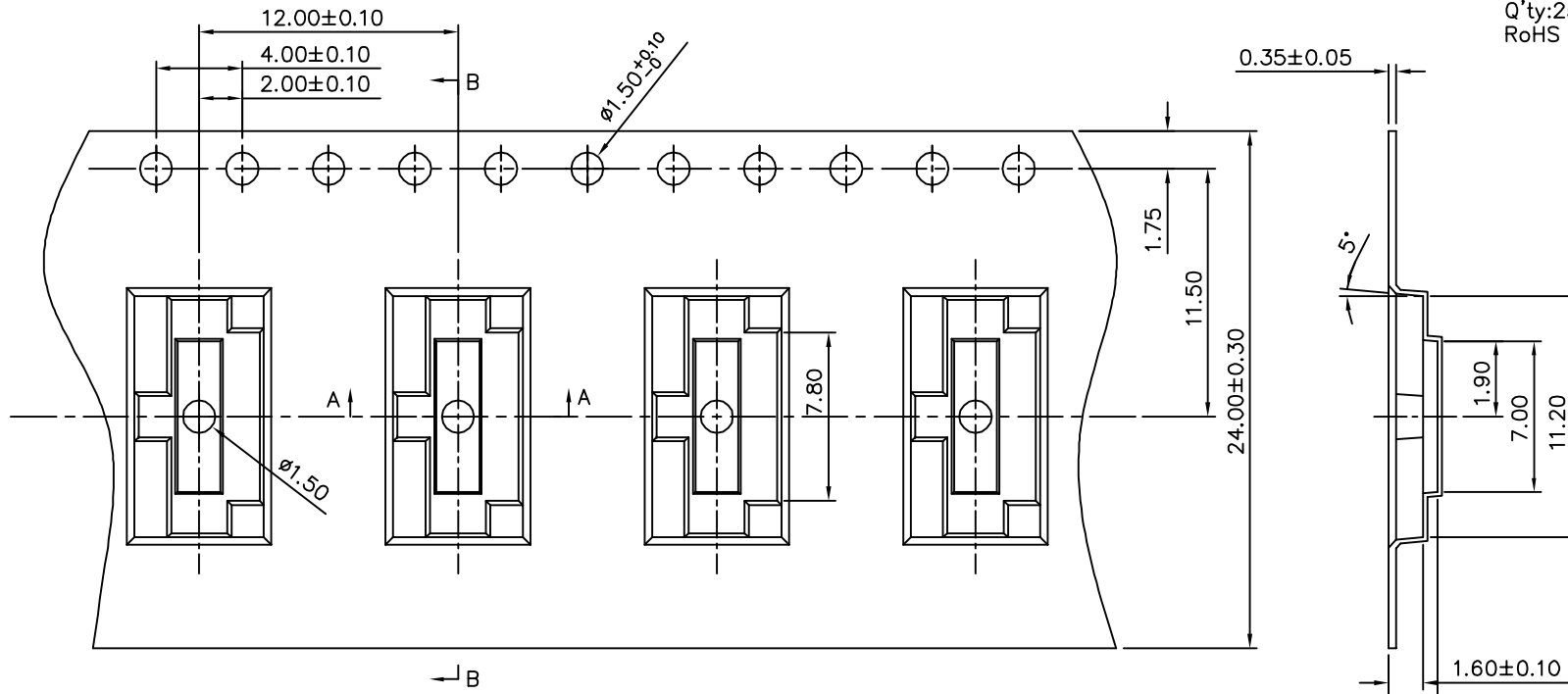
No.	Descriptions	Q'ty	Material	Remark
1	Cover	1	Nickel Silver	
2	Stem	1	PA46	Black
3	Contact	1	Copper Alloy	Gold Plated
4	Spring Plate	1	Stainless Steel	
5	Base	1	LCP	Black
6	Terminal	1	Brass	Gold Plated

4UCON 元化興業股份有限公司
 4UCON TECHNOLOGY INC.

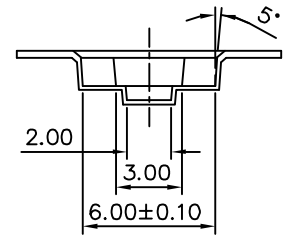
DRAWING No.		APPROVED BY		UNLESS OTHERWISE SPECIFIED TOLERANCES ARE .X ±0.20 .XX ±0.20 ANG.
20169		EMILY		
		CHECKED BY		
		HZF		
		DRAWING BY		
		WSS		
SCALE	NONE	REV.	A0	UNIT mm

△ A0	NEW RELEASE	HZF	02/17/2011
NO. REV.	REVISIONS	CHK	DATE

SPECIFICATION
 Pitch Tolerance Over Any 10
 Pitch $\pm 0.20\text{mm}$
 Q'ty: 2500 PCS/Reel
 RoHS Compliant



Section B-B



Section A-A

4UCON 元化興業股份有限公司
 4UCON TECHNOLOGY INC.

DRAWING No.		APPROVED BY		UNLESS OTHERWISE SPECIFIED TOLERANCES ARE							
20169		EMILY		.XX ± 0.10 (Max.)							
		CHECKED BY									
		HZF									
		DRAWING BY									
		WSS									
SCALE	NONE	REV.	A0	UNIT	mm	NO.	REV.	REVISIONS	CHK	DATE	
						A0		NEW RELEASE	HZF	02/17/2011	