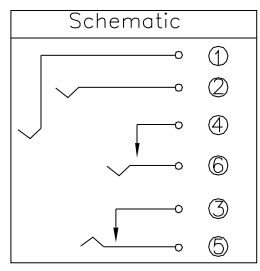
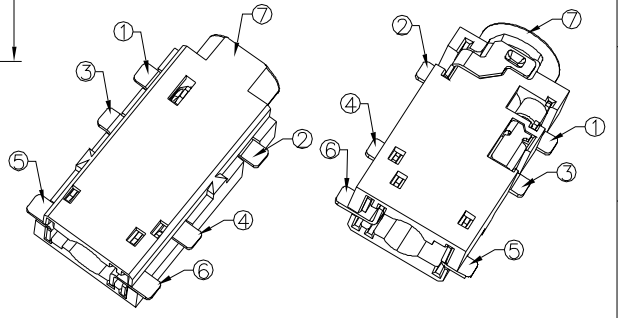
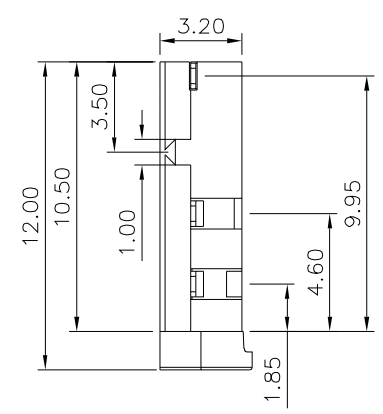
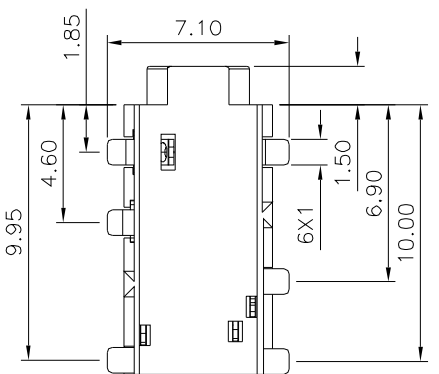
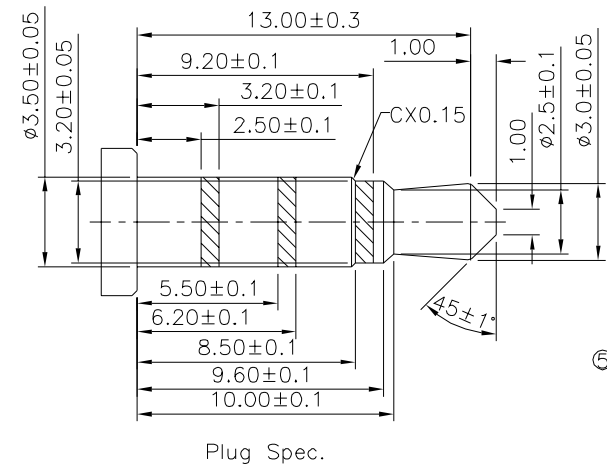
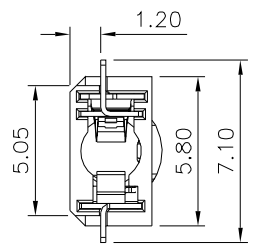
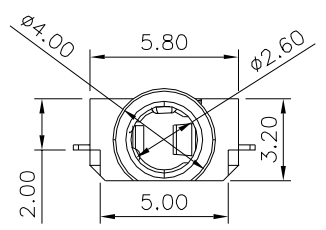
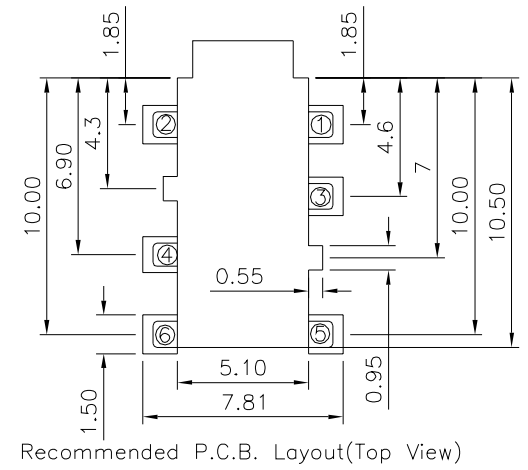
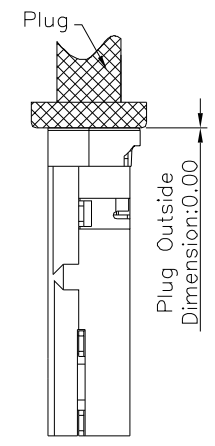
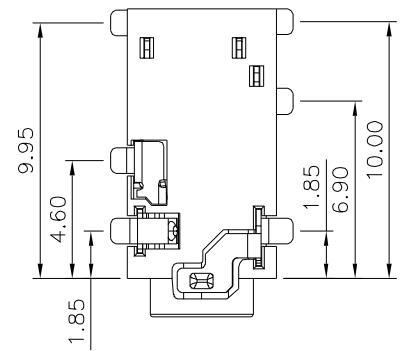


**SPECIFICATION**  
 Rating:DC 30V 0.5A  
 Withstand Voltage:500V AC  
 Contact Resistance:30 Milliohms Max.  
 Insulation Resistance:100 Megaohms Min.  
 (DC 250V)  
 Insertion And Extraction Force:3~30N  
 Life Test:5000 Cycles  
 RoHS Compliant



|     |             |      |                 |                         |
|-----|-------------|------|-----------------|-------------------------|
| ⑦   | Housing     | 1    | PA9T            | Black                   |
| ⑥   | Terminal 6# | 1    | Phosphor Bronze | Glod Plated Over Nickel |
| ⑤   | Terminal 5# | 1    | Phosphor Bronze | Glod Plated Over Nickel |
| ④   | Terminal 4# | 1    | Phosphor Bronze | Glod Plated Over Nickel |
| ③   | Terminal 3# | 1    | Phosphor Bronze | Glod Plated Over Nickel |
| ②   | Terminal 2# | 1    | Phosphor Bronze | Glod Plated Over Nickel |
| ①   | Terminal 1# | 1    | Phosphor Bronze | Glod Plated Over Nickel |
| No. | Part Name   | Q'ty | Material        | Remark                  |

**4UCON** 元化興業股份有限公司  
 4UCON TECHNOLOGY INC.

|             |      |                |    |   |
|-------------|------|----------------|----|---|
| DRAWING No. |      | APPROVED BY    |    | UNLESS OTHERWISE SPECIFIED TOLERANCES ARE<br>X. ±0.50 X.* ±2*<br>.X ±0.30 .X* ±*<br>.XX ±0.20<br>.XXX ±0.10 |
| 21176       |      | MEI            |    |   |
|             |      | CHECKED BY HZF |    |   |
|             |      | DRAWING BY CYP |    | UNIT mm   |
| SCALE       | NONE | REV.           | A0 |   |

|     |      |             |     |            |
|-----|------|-------------|-----|------------|
| △   | A0   | NEW RELEASE | HZF | 09/03/2015 |
| NO. | REV. | REVISIONS   | CHK | DATE       |