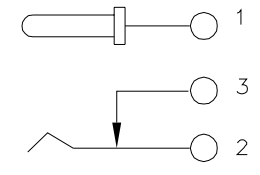
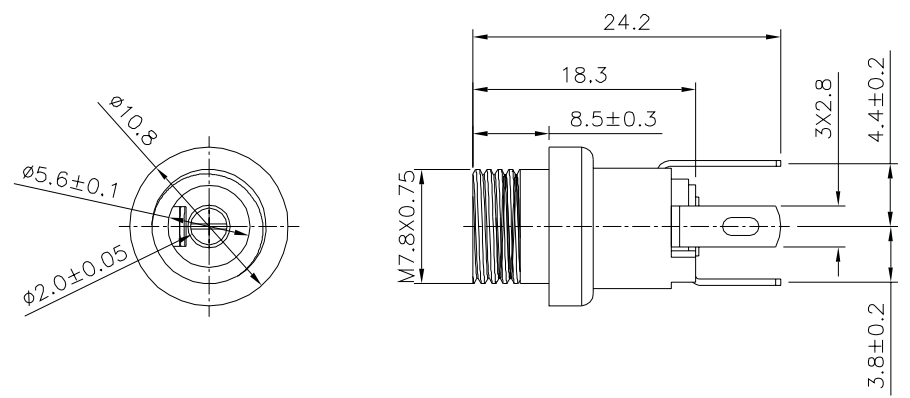
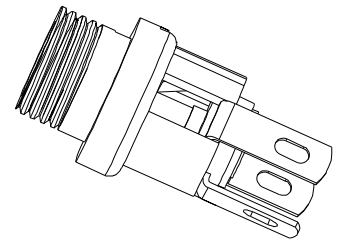
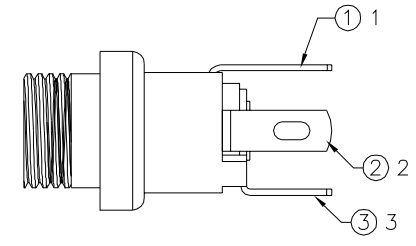
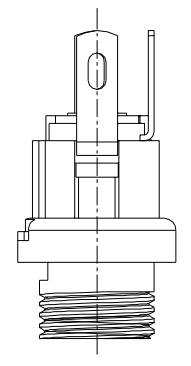
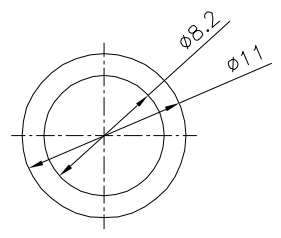


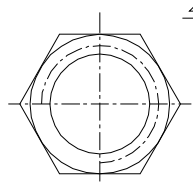
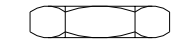
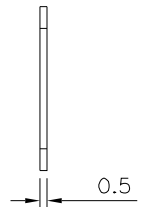
**SPECIFICATION**  
 Rating:DC 30V 0.5A  
 Withstand Voltage:500V AC  
 Contact Resistance:30 Milliohms Max.  
 Insulation Resistance:100 Megaohms Min.(DC 250V)  
 Insertion And Extraction Force:3N~30N  
 Life Test:5000 Cycles  
 RoHS Compliant



Circuit Diagram



⑧ Washer



⑨ Nut

No.	Part Name	Q'ty	Material	Remark
⑨	Nut	1	H59	—
⑧	Washer	1	Mn65	—
⑦	Cover	1	PBT	Black
⑥	Housing	1	PBT	Black
⑤	Fix Turn	1	H59	CuSn Plated
④	Pin	1	H59	CuSn Plated
③	Terminal-3#	1	Phosphor Bronze	CuSn Plated
②	Terminal-2#	1	Phosphor Bronze	CuSn Plated
①	Terminal-1#	1	Brass	CuSn Plated

**4UCON** 元化興業股份有限公司  
 4UCON TECHNOLOGY INC.

DRAWING No.		APPROVED BY		UNLESS OTHERWISE SPECIFIED TOLERANCES ARE L<4 ±0.15 4<L≤16 ±0.2 16<L≤63 ±0.3 ANG. ±5°
21326		MEI		
		CHECKED BY		
		HZF		
		DRAWING BY		
		CYP		
SCALE	NONE	REV.	A0	UNIT mm

△ A0	NEW RELEASE	HZF	11/17/2017
NO.REV.	REVISIONS	CHK	DATE