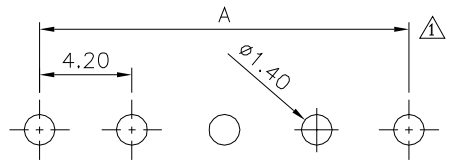
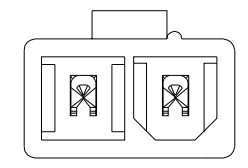
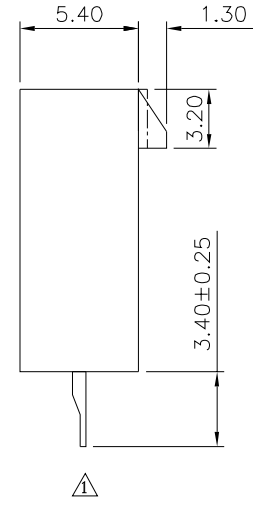
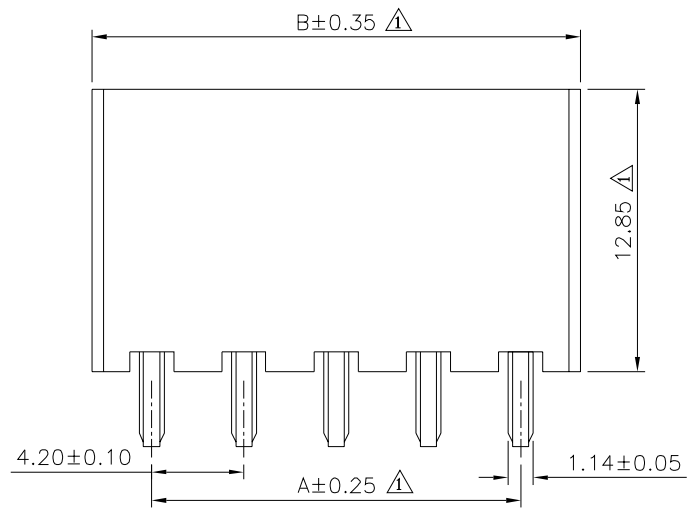
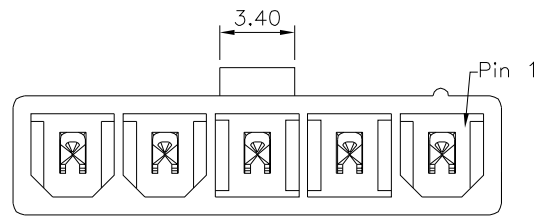


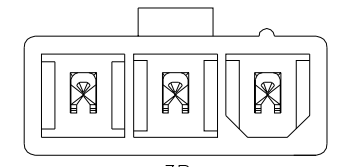
△ SPECIFICATION
 Current Rating:7A AC,DC
 Voltage Rating:600V AC,DC
 Withstanding Voltage:1500V AC/Minute
 Insulation Resistance:1000 Megohms Min.
 Contact Resistance:20 Milliohms Max.
 Temperature Range:-25°C~+85°C
 Insulator:PA66,UL94V-2,Nature Color
 Contact:Brass,Tin Plated Over Nickel
 RoHS Compliant



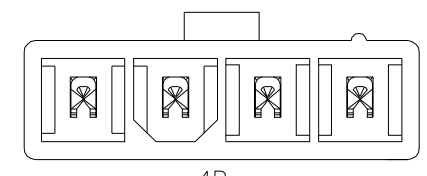
Recommended P.C.B. Layout



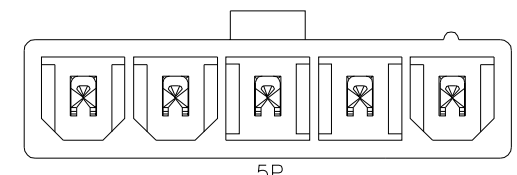
2P



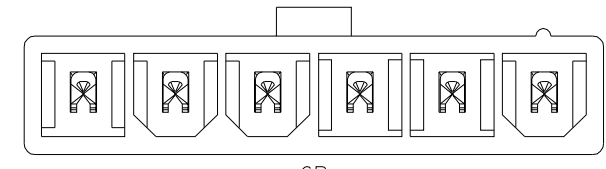
3P



4P



5P



6P

Pin	A	B
02	4.20	9.60
03	8.40	13.80
04	12.60	18.00
05	16.80	22.20
06	21.00	26.40

4UCON 元化興業股份有限公司
 4UCON TECHNOLOGY INC.

DRAWING No.		APPROVED BY		UNLESS OTHERWISE SPECIFIED TOLERANCES ARE △ X. ±0.30 X ±0.25 XX ±0.20 XXX ±0.05 ANG. ±1°
21718		MEI		
		CHECKED BY		
		HZF		
		DRAWING BY		UNIT mm
		CYP		
SCALE	NONE	REV.	A1	

NO.	REV.	REVISIONS	CHK	DATE
△ A1		Modify Data	HZF	09/06/2019
△ A0		NEW RELEASE	HZF	08/03/2014