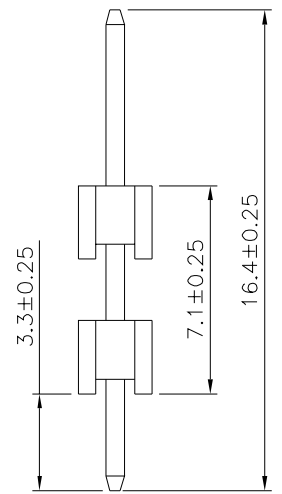
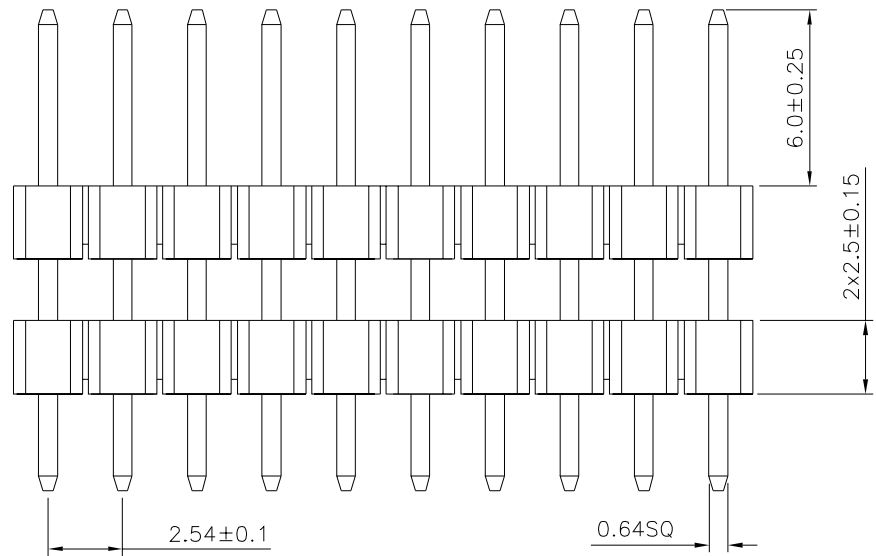
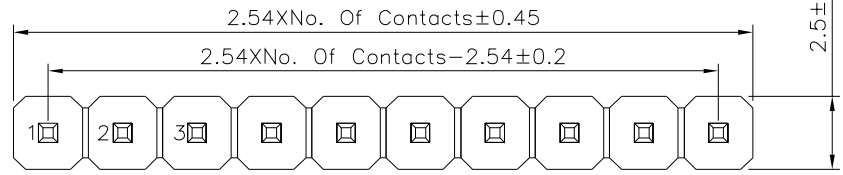


Recommended P.C.B. Layout(Top View)  
 (PCB Board Tolerance $\pm 0.05$ )



**SPECIFICATION**

Current Rating:3A  
 Withstand Voltage:1000V AC Min./Minuted  
 Contact Resistance:20 Milliohms Max.  
 Insulation Resistance:1000 Megohms Min.  
 Operating Temperature:-40°C~+105°C  
 Insulator:PA6T(UL94V-0),Black  
 Contact:Brass,Gold Flash Over Nickel  
 RoHS Compliant

**4UCON** 元化興業股份有限公司  
 4UCON TECHNOLOGY INC.

DRAWING No.		APPROVED BY		UNLESS OTHERWISE SPECIFIED TOLERANCES ARE X: $\pm 0.25$ X': $\pm 2'$ .X: $\pm 0.20$ .X': $\pm 1.5'$ .XX: $\pm 0.15$ .XX': $\pm 1'$ .XXX: $\pm 0.10$ .XXX': $\pm 0.5'$
21971		MEI		
		CHECKED BY		
		HZF		
		DRAWING BY		
		HAO		
SCALE	NONE	REV.	A0	UNIT
				mm

NO.	REV.	REVISIONS	CHK	DATE
$\triangle$ A0		NEW RELEASE	HZF	09/23/2020