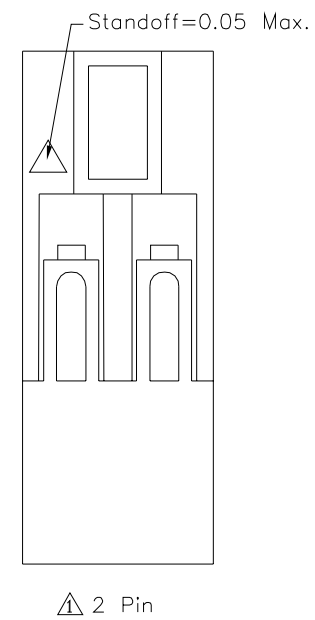
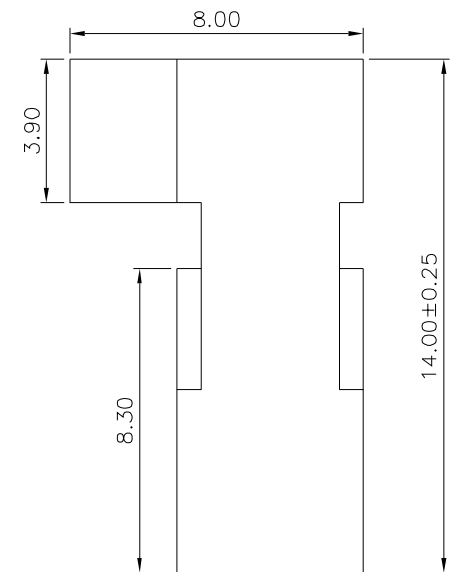
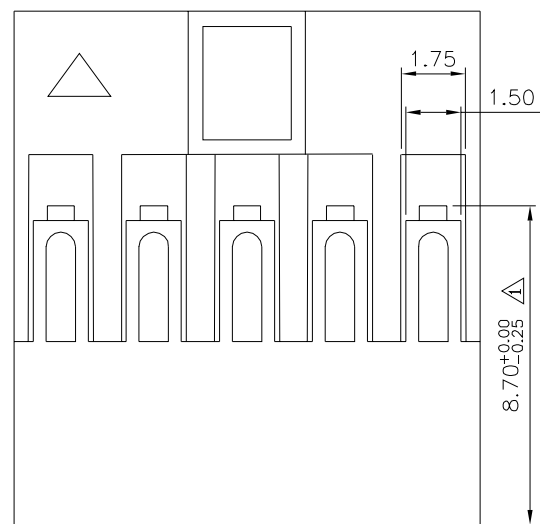
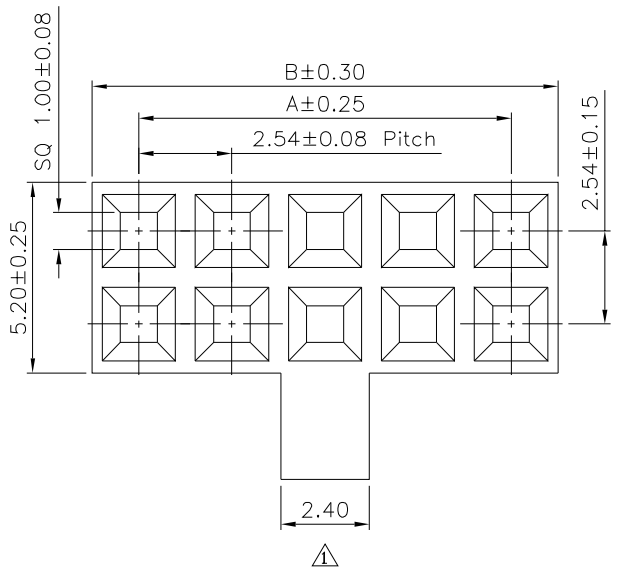


△ SPECIFICATION

Current Rating:3A AC/DC  
 Voltage Rating:250V AC/DC  
 Contact Resistance:20 Milliohms Max.  
 Insulation Resistance:1000 Megaohms Min.  
 Withstanding Voltage:800V AC/Minute  
 Temperature Range:-25°C~+85°C  
 Insulator:PBT+15%G.F.(UL94V-0),Black  
 RoHS Compliant



Pin	A	B	Pin	A	B
04	2.54	5.20	36	43.18	45.72
06	5.08	7.62	38	45.72	48.26
08	7.62	10.16	40	48.26	50.80
10	10.16	12.70	42	50.80	53.34
12	12.70	15.24	44	53.34	55.88
14	15.24	17.78	46	55.88	58.42
16	17.78	20.32	48	58.42	60.96
18	20.32	22.86	50	60.96	63.50
20	22.86	25.40	52	63.50	66.04
22	25.40	27.94	54	66.04	68.58
24	27.94	30.48	56	68.58	71.12
26	30.48	33.02	58	71.12	73.66
28	33.02	35.56	60	73.66	76.20
30	35.56	38.10	62	76.20	78.74
32	38.10	40.64	64	78.74	81.28
34	40.64	43.18			

**4UCON** 元化興業股份有限公司  
 4UCON TECHNOLOGY INC.

DRAWING No. △ 22201  
 APPROVED BY EMILY  
 CHECKED BY HZF  
 DRAWING BY SONG  
 SCALE NONE REV. A1

UNLESS OTHERWISE SPECIFIED TOLERANCES ARE  
 .X ±0.25 △  
 .XX ±0.20 .X\* ±2\*  
 .XXX ±0.10 .XX\* ±1\*  
 UNIT mm

NO.	REV.	REVISIONS	CHK	DATE
△ A1		Modify Data	HZF	08/08/2014
△ A0		NEW RELEASE	HZF	09/26/2007