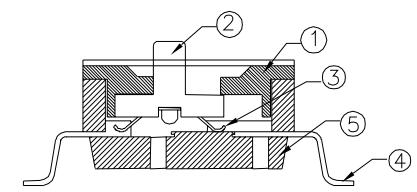
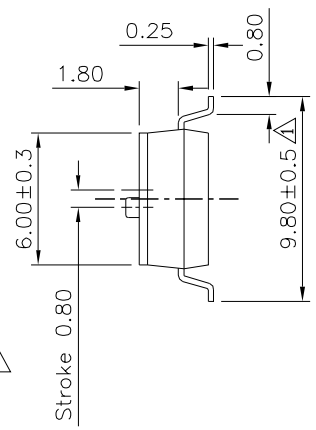
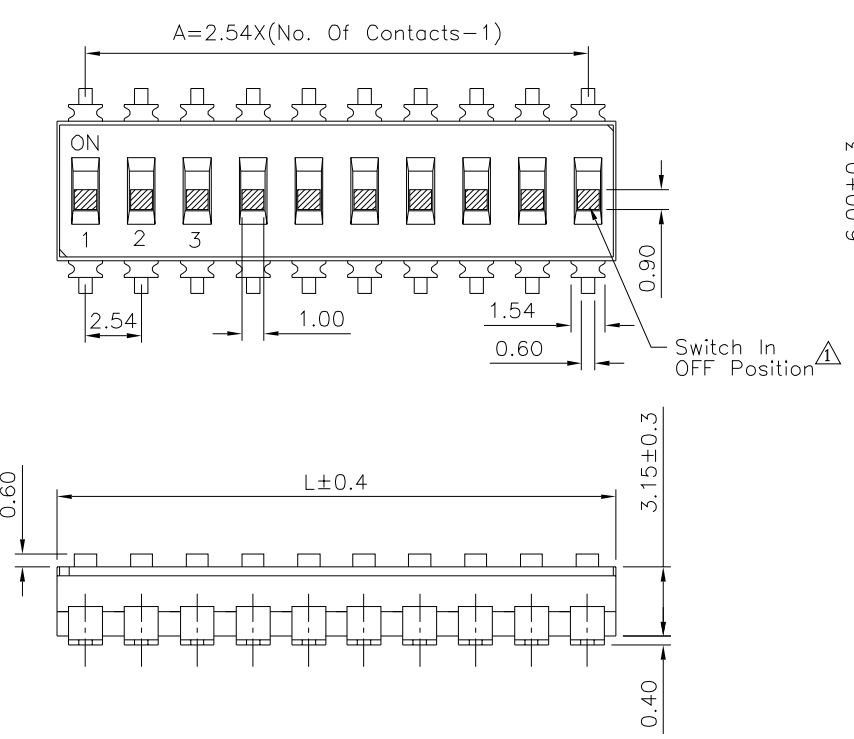


△ SPECIFICATION
 Current Rating: Non-Switching: DC 50V 100mA
 Switching: DC 24V 25mA
 Contact Resistance: 100 Milliohms Max.
 Insulation Resistance: 100 Megaohms Min.
 Withstand Voltage: 500V AC (50Hz Or 60Hz)/Minute
 Operation Temperature: -20°C ~ +85°C
 RoHS Compliant



Item	Name	Material	Remark
①	Cover	PPS	Black
②	Autuator	LCP	White
③	Contact	Phosphor Bronze	Gold Plated Over Nickel
④	Terminal	Brass	Gold Plated Over Nickel
⑤	Base	PPS	Black

Schematic	Pin	L	A
↓	1	2.54	
≡	2	5.08	2.54
≡≡	3	7.62	5.08
≡≡≡	4	10.16	7.62
≡≡≡≡	5	12.70	10.16
≡≡≡≡≡	6	15.24	12.70
≡≡≡≡≡≡	7	17.78	15.24
≡≡≡≡≡≡≡	8	20.32	17.78
≡≡≡≡≡≡≡≡	9	22.86	20.32
≡≡≡≡≡≡≡≡≡	10	25.40	22.86

4UCON 元化興業股份有限公司
 4UCON TECHNOLOGY INC.

DRAWING No. **△**
22365
 APPROVED BY EMILY
 CHECKED BY HZF
 DRAWING BY LZX
 SCALE NONE
 REV. A1
 UNLESS OTHERWISE SPECIFIED TOLERANCES ARE
 .XX ±0.2
 .XX° ±2.0°
 UNIT mm

NO.	REV.	REVISIONS	CHK	DATE
△	A1	Modify Data	HZF	07/11/2024
△	A0	NEW RELEASE	HZF	09/12/2021