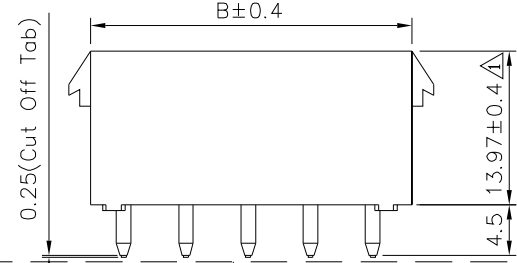
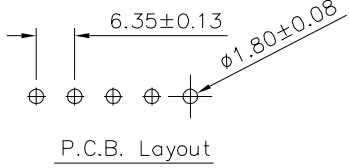
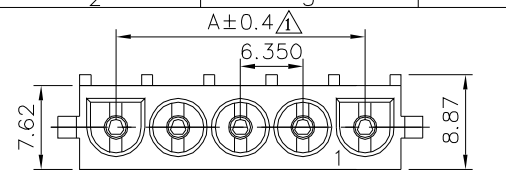
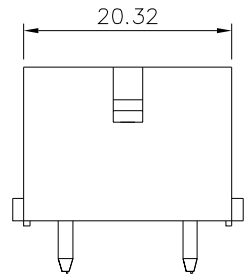
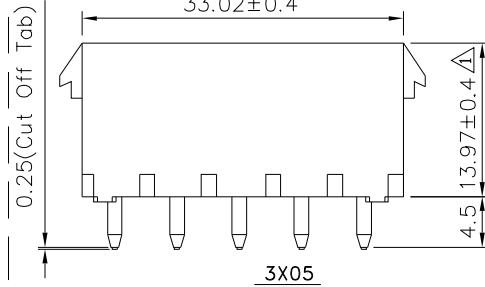
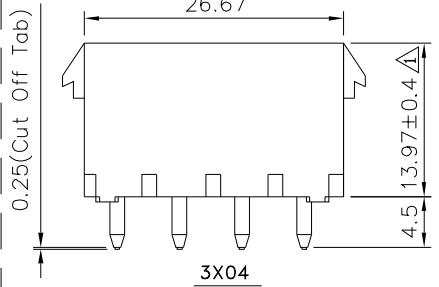
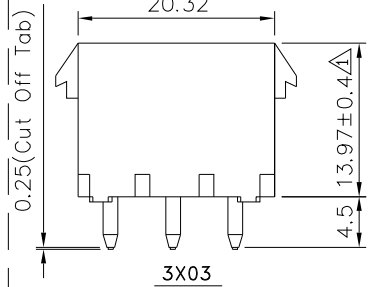
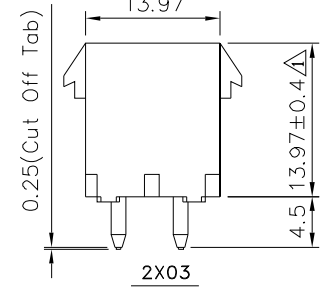
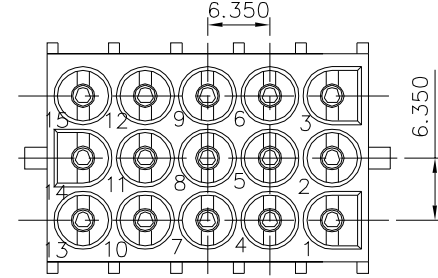
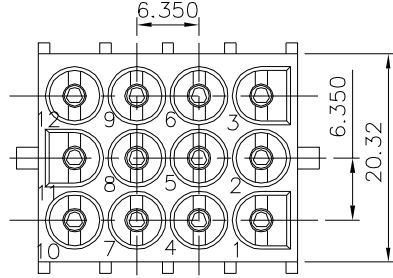
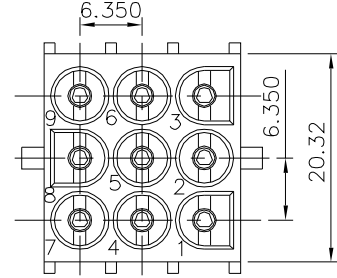
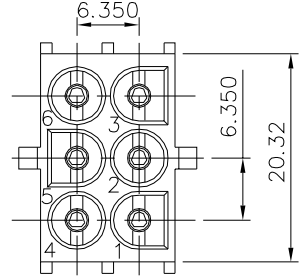
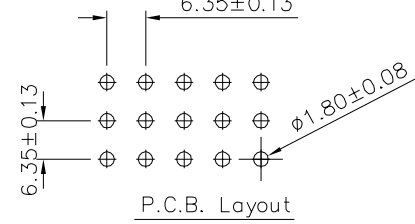
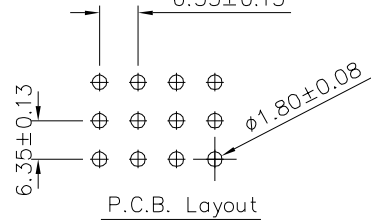
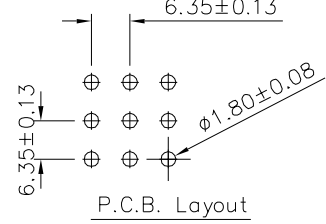
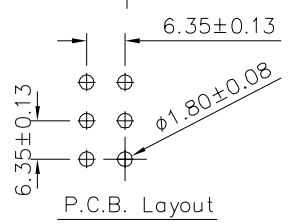


Circuit	A	B
02	6.35	13.97
03	12.70	20.32
04	19.05	26.67
05	25.40	33.02
06	31.75	39.37
07	38.10	45.72
08	44.45	52.07
09	50.80	58.42
10	57.15	64.77

SPECIFICATION
 Current Rating: 13A(2~4P), 11A(6~15P)
 Voltage Rating: 600V
 Dielectric Withstanding Voltage: 5000V AC/Minute
 Ambient Temperature Rise: -55°C To +105°C
 Insulator: PA66(UL94V-2), Nature
 Contact: Phosphor Bronze, Tin Plated
 RoHS Compliant



1XNPIN



4UCON 元化興業股份有限公司
 4UCON TECHNOLOGY INC.

DRAWING No. Δ
 22688
 APPROVED BY MEI
 CHECKED BY HZF
 DRAWING BY HAO

UNLESS OTHERWISE SPECIFIED TOLERANCES ARE
 .X ±0.4
 .XX ±0.25
 .XXX ±0.08

SCALE NONE REV. B1

NO.	REV.	REVISIONS	CHK	DATE
Δ B1		Modify Data	HZF	12/17/2014
Δ B0		Modify Data	HZF	12/01/2009
Δ B0		NEW RELEASE	HZF	12/01/2009