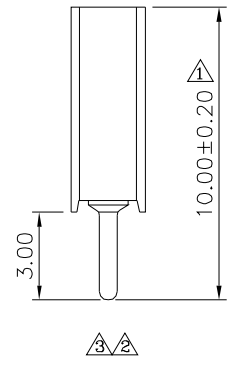
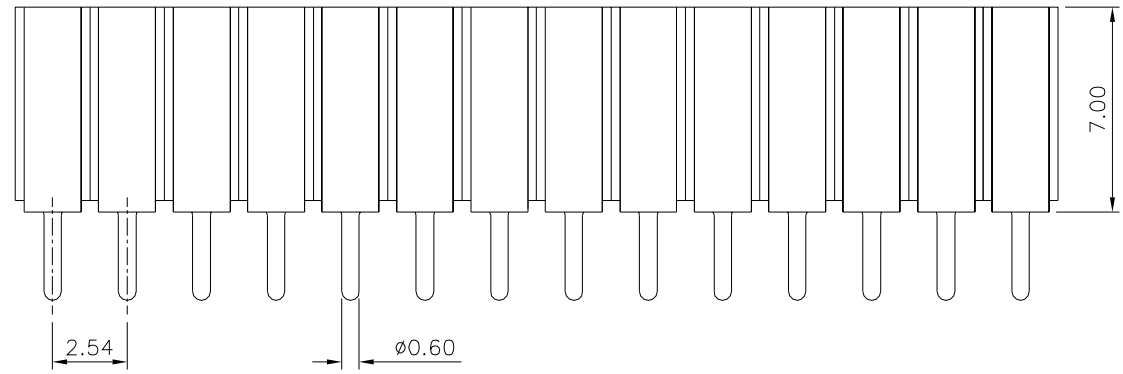
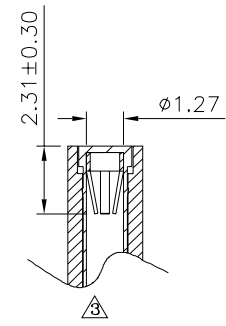
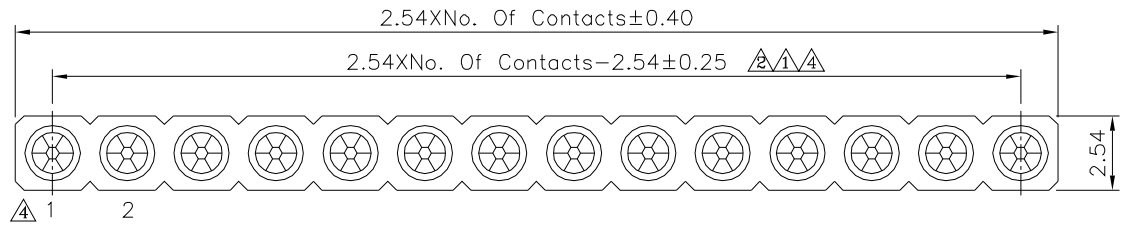


Recommended P.C.B. Layout  
 (PCB Board Tolerance  $\pm 0.05$ )

**SPECIFICATION**

Current Rating: 3 Amps/Contact Max.  
 Contact Resistance: 20 Milliohms Max./Contact  
 Insulation Resistance: 1000 Megaohms Min.  
 Operation Temperature:  $-40^{\circ}\text{C} \sim +105^{\circ}\text{C}$   
 Average Insertion Force With Steel Pin Of  $\phi 0.66\text{mm}$ :  $< 140\text{g}$   
 Average Withdrawal Force With Steel Pin Of  $\phi 0.66\text{mm}$ :  $> 25\text{g}$  Min.  
 Pin (Outer Sleeve): Brass, Tin Plated Over Nickel  
 Clip (Contact 6 Finger): Beryllium Copper, Gold Flash Over Nickel  
 Insulator (Housing): PPS (UL94V-0), Black  
 RoHS Compliant



**4UCON** 元化興業股份有限公司  
 4UCON TECHNOLOGY INC.

DRAWING No.  $\pm 0.15$   
 22729

APPROVED BY MEI  
 CHECKED BY HZF  
 DRAWING BY CYP

UNLESS OTHERWISE SPECIFIED TOLERANCES ARE  
 X:  $\pm 0.50$   
 .X:  $\pm 0.30$   
 .XX:  $\pm 0.20$   
 .XXX:  $\pm 0.10$   
 ANG.  $\pm 5^{\circ}$

$\pm 0.15$	A4	Modify Data	HZF	11/30/2022
$\pm 0.15$	A3	Modify Data	HZF	11/23/2019
$\pm 0.15$	A2	Modify Data	HZF	03/12/2013
$\pm 0.15$	A1	Modify Data	HZF	02/17/2011
$\pm 0.15$	A0	NEW RELEASE	HZF	08/26/2008
NO. REV.	REVISIONS		CHK	DATE

SCALE NONE REV. A4 UNIT mm